



Travis County hosted a public open house for the Hamilton Pool Road Safety Improvements Project on Thursday, October 29, 2015. More than 65 people attended the meeting, visited with project team members, and shared their input on the project.

Two safety improvement projects have been identified including the evaluation and reconstruction of Hamilton Creek Bridge, and the evaluation and improvement of Hamilton Pool Park entrance. In addition, the County is in the very early stages of identifying additional safety improvements along Hamilton Pool Road from RM 12 and east of the switchback of the Pedernales River. At the meeting, Potential Safety Improvement Concepts were shared as a range of tools and options. The County is collecting input on these options as well as additional ideas for safety improvements from the public.

### Overview of Meeting Exhibits

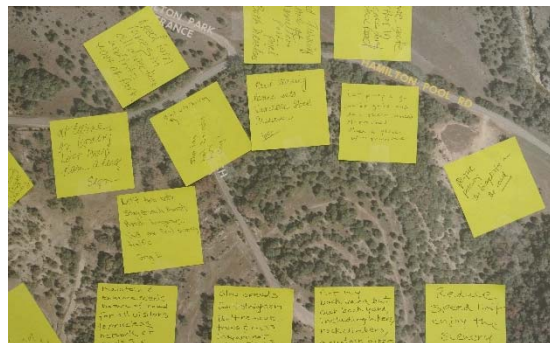
1. Project Handout – Distributed to share project information
2. Project Overview Board – Included project scope and map of the project limits
3. Environmental Constraints – Covering a large area around the project
4. Potential Safety Improvement Concepts – Six boards were displayed which identified a range of safety improvement concepts that could be used in different areas along the project limits to improve safety and mobility. These boards included:
  - Potential Safety Improvements – List of 12
  - Potential Intersection Improvement Concept – Left Turn Lane
  - Potential Intersection Improvement Concept – Improving Skewed Intersection
  - Potential Improvement Concept – Improving Sight Distance Around Curves
  - Potential Typical Sections
5. Identified Safety Improvements Projects – Boards displayed two identified safety improvement concepts that are included in this project
  - Hamilton Pool Park Entrance
  - Hamilton Creek Bridge

In addition to the exhibits, a large aerial map of the area was displayed so attendees could mark where they live and a large aerial map of the project limits was displayed for attendees to share comments on safety concerns and possible solutions (see photos below).

Attendees were able to share input via the maps, online survey, or submitting general comments. Comments and questions for this project are always welcome. To be included in the report for this public meeting, they must be received by November 15, 2015.



Map where you live exercise



Map safety concerns exercise

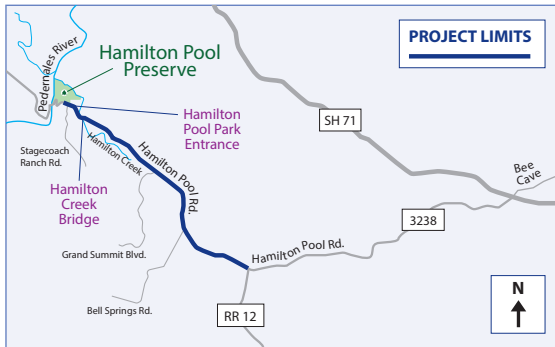


# Hamilton Pool Road Safety Improvements Project

**PUBLIC MEETING  
OCTOBER 29, 2015**

## Project Overview

Travis County is currently studying Hamilton Pool Road from RM 12 to east of the switchback at the Pedernales River in order to improve mobility and safety in the area.



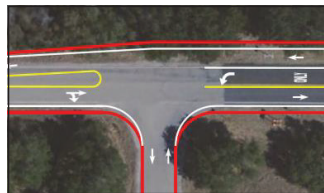
- ### PROJECT INCLUDES:
- Study of potential safety improvement concepts
  - Evaluation and reconstruction of Hamilton Creek Bridge
  - Evaluation and improvement to Hamilton Pool Park entrance

## Potential Safety Improvement Concepts

The project team is working to identify, document, and categorize additional safety improvement needs through technical evaluations and input from the community. **Potential safety improvement concepts are below:**



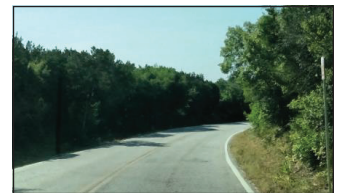
Improve Driveways



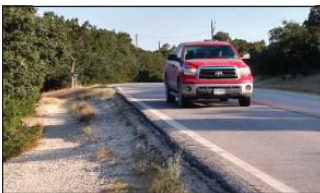
Selected Intersection Improvements



Add Metal Beam Guard Rails



Improve Sight Distance at Curves



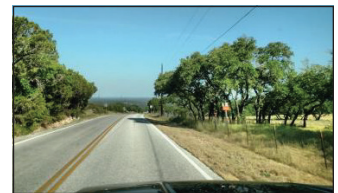
Improve Pavement Edge



Shoulder Widening



Add Rumble Strips



Remove Obstructions from Clear Zone



Passing Lanes



Turn Around for Trucks and Busses



Add Safety Signage



Speed Limit

## Evaluation of Hamilton Creek Bridge

The Hamilton Creek Bridge has shown deterioration during recent routine inspections. While the bridge is currently safe, the County is planning to make improvements to be proactive in maintaining this structure. Ongoing bridge analysis may suggest additional structure improvements.

### Proposed Improvements:

- Replace bridge decking
- Replace bridge rails
- Improvements to approaches on both sides of the bridge

## Evaluation of Hamilton Pool Park Entrance

The growing popularity of Hamilton Pool Park brings additional traffic and vehicles which create a waiting line to enter the park and often cause the road to become backed up or blocked to passing vehicles. Improvements are needed to provide safe and efficient passage around vehicles waiting to enter.

### Proposed Improvements:

- Addition of left and right turn lanes at park entrance
- Addition of shoulders near entrance

## PUBLIC INVOLVEMENT

Travis County is committed to working closely with the community on the Hamilton Pool Road Project. Community input is very helpful and will be considered along with the technical information to develop recommended solutions. An additional public meeting will be held to share the recommended solution and collect feedback from the community. Additional public meetings may be held if needed.

### Comments

While your comments and questions are always accepted, they must be received or postmarked by **Sunday, November 15, 2015** in order to be included in this public meeting report. Written comments and questions can be submitted by using one of the following methods:

- Complete a comment card at this meeting
- Complete the online survey this evening
- **Mail:** P.O. Box 5459, Austin, TX 78763
- **Email:** [HPR-safetyimprovements@traviscountytexas.gov](mailto:HPR-safetyimprovements@traviscountytexas.gov)

### ***Take the Survey!***

Please take a moment to participate in our project survey. Computers are available this evening or the survey can be accessed at:

[www.surveymonkey.com/r/hprsafety](http://www.surveymonkey.com/r/hprsafety)

The survey will remain open through  
**Sunday, November 15, 2015.**

### CONTACT INFORMATION

Chiddi N'jie, P.E.  
Travis County  
Project Manager  
512-854-7585

Arin Gray  
Public Involvement  
Consultant  
512-533-9100 Ext. 12

### PROJECT UPDATES

If you are interested in receiving project updates, please send an email to:

[HPR-safetyimprovements@traviscountytexas.gov](mailto:HPR-safetyimprovements@traviscountytexas.gov)  
with "Updates" in the subject line.

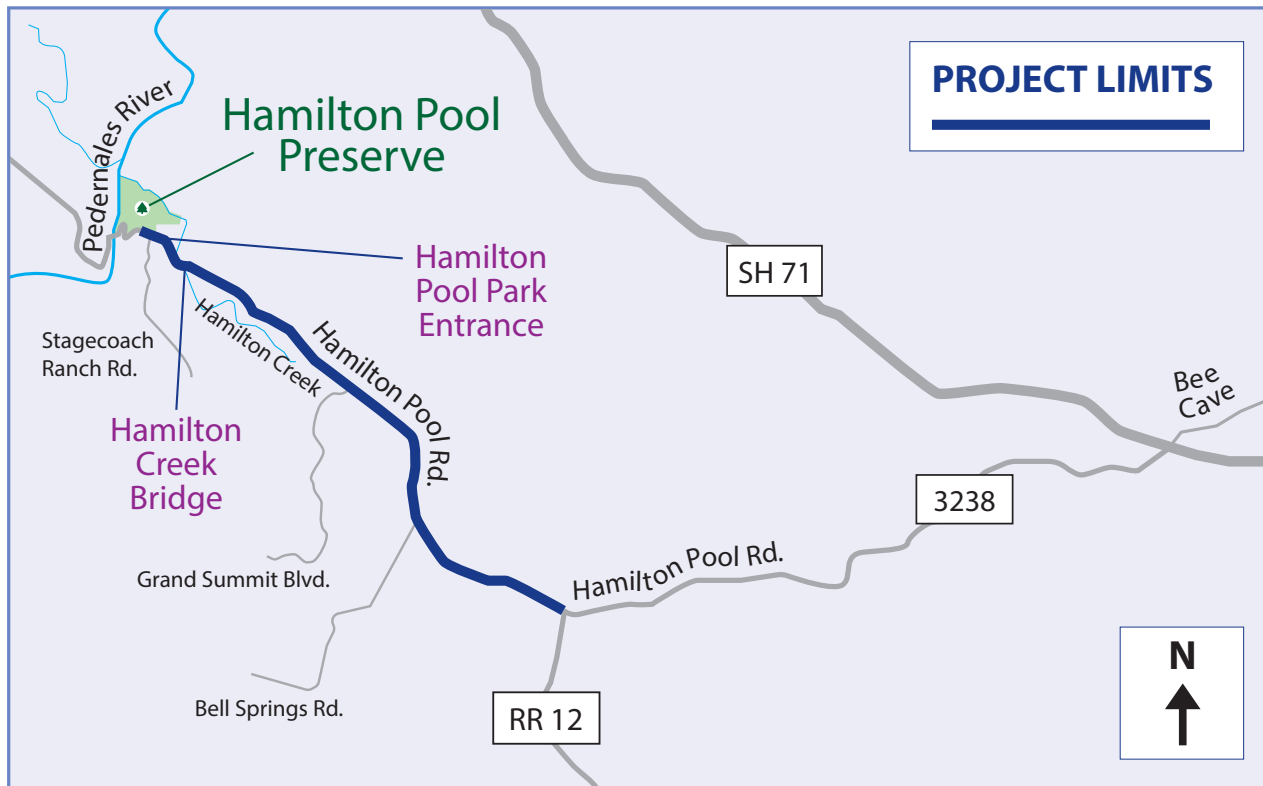
# Project Overview



## Hamilton Pool Road Safety Improvements Project

**Purpose:** Hamilton Pool Road is being studied to improve mobility and safety in the area.

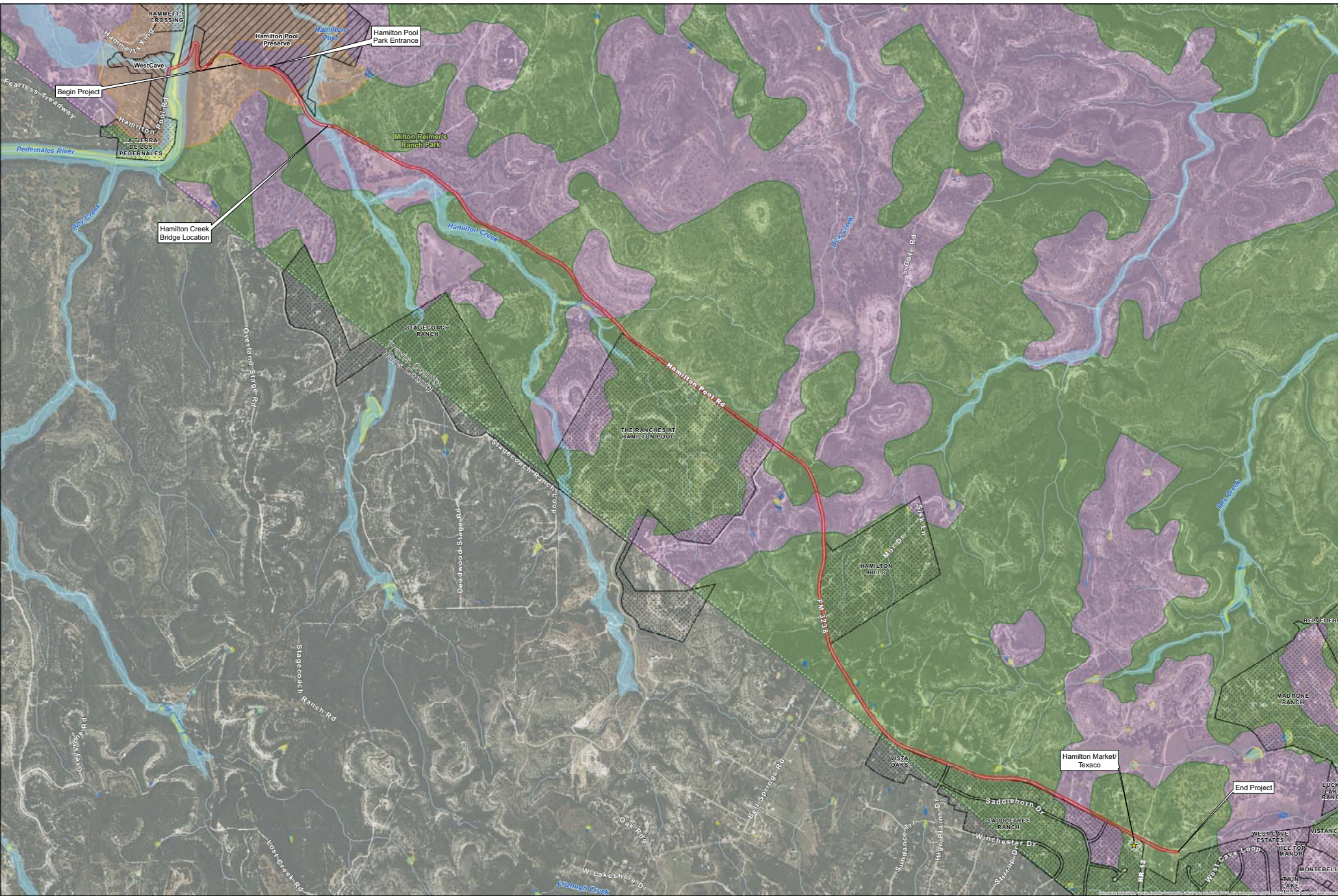
**Project Limits:** This project extends from RM 12 to east of the switchback at the Pedernales River, a distance of about 6.5 miles (this project does not include the switchback or low water crossing at the river).



### Project Includes:

- Study of potential safety improvement concepts
- Evaluation and reconstruction of Hamilton Creek Bridge
- Evaluation and improvement to Hamilton Pool Park entrance

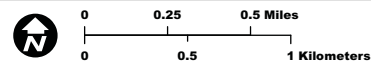




# Hamilton Pool Road Safety Improvements Project

## Preliminary Potential Environmental Constraints

- |                       |                        |   |                     |
|-----------------------|------------------------|---|---------------------|
| Project Location      | BCP Tracts<br>LCRA     | BCCP Permit Area<br>GCW Mitigation Zones<br>Zone 1 - Habitat Known to Support GCW | NHD Stream          |
| Proposed Right-of-Way | Travis County          | Zone 2 - Undetermined   | NHD Water           |
| Subdivision           | Petroleum Storage Tank | Zone 3 - Does Not Support GCW   | NWI Wetland         |
|                       |                        |   | 100-Year Flood Zone |



Map Created: 10/30/2015  
 Data Sources: City of Austin (2015), NHD (2014), FEMA NFHL (2015), NWI (2014), TCAD (2015)  
 Aerial Source: NAIP (2014)



# Safety Improvement Concepts

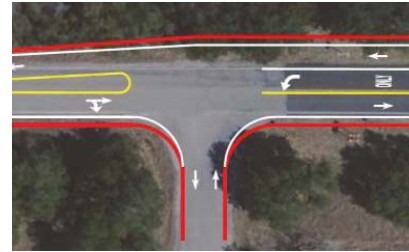


## Hamilton Pool Road Safety Improvements Project



### Improve Driveways:

- Allows safer and more efficient exit from and entrance to roadway



### Selected Intersection Improvements:

- Widen roadway pavement to add left turn
- Reduce backups, potential for rear end collisions
- Increase safety



### Improve Pavement Edge:

- Decreased chance of rollover
- Improves driver safety significantly
- Reduce chance of losing control of vehicle



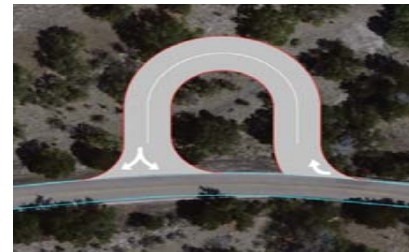
### Shoulder Widening:

- Provides a paved area for vehicles to avoid oncoming traffic, and a place for disabled vehicles



### Passing Lanes:

- Improves the flow of traffic
- Reduces "close calls" when passing
- Improves safety for all modes of traffic



### Turn Around for Truck and Buses

- Easier for truck, buses, and cars to negotiate turn
- Reduces backups on Hamilton Pool Road
- Provides opportunity for park visitor staging area

# Safety Improvement Concepts



## Hamilton Pool Road Safety Improvements Project



### Add Metal Beam Guard Rails:

- Protection from severe slopes, culvert crossings, and objects close to the road



### Improve Sight Distance at Curves:

- Provides time and space to avoid objects in the road
- Improved decision, reaction, and braking time



### Add Rumble Strips:

- Place adjacent to traffic lane edge stripe to provide audible warning for drivers



### Remove Obstructions from Clear Zone:

- Provide an area that allows the errant driver to react and recover safely



### Add Safety Signage:

- Provides warning of expected roadway conditions



### Speed Limit:

- Consider adjusting speed limit

# Potential Improvement Concepts



Hamilton Pool Road  
Safety Improvements Project

## Improving Sight Distance Around Curves

**Issue:** There are locations with inadequate stopping sight distance to allow avoiding objects in the road.

### Improvement Alternatives:

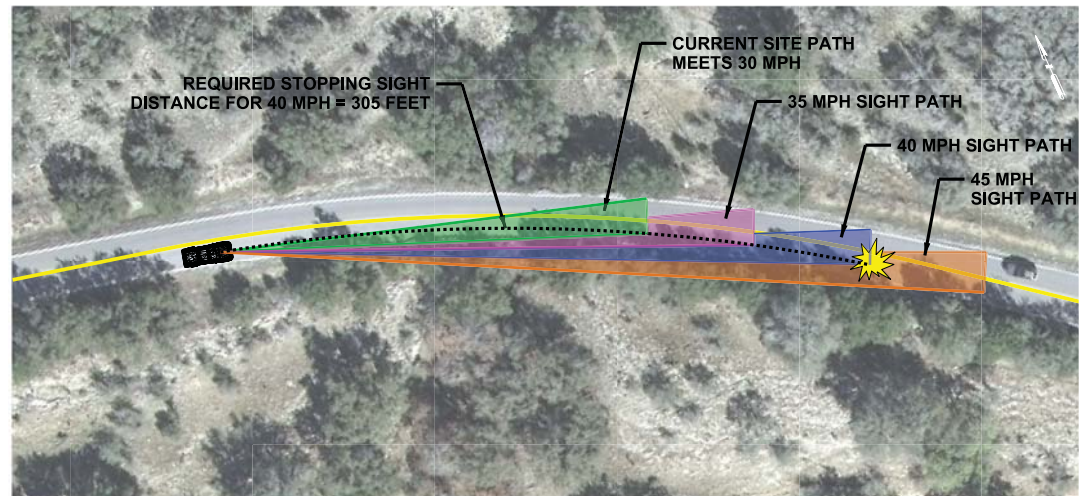
- Clear obstructions in the sight path
- Reduce the roadway curvature by realigning the road
- Reduce vehicle speed to fit sight conditions
- Provide paved shoulders

### Benefits:

- Provides time and space to avoid objects in the road
- Reduces potential accidents
- Improves safety along roadway

### Considerations:

- May require removing visual obstructions such as trees, rock outcroppings, etc.
- May require additional right-of-way or easements





# Potential Intersection Improvement Concepts



Hamilton Pool Road  
Safety Improvements Project

## Improving Skewed Intersection

**Issue:** There are certain skewed intersections with limited sight distance for vehicles turning onto Hamilton Pool Road. Vehicles turning left impede through traffic.

### Improvement Alternatives:

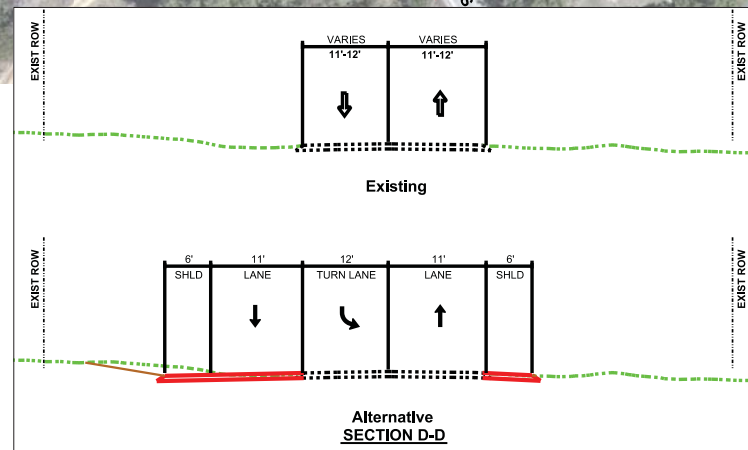
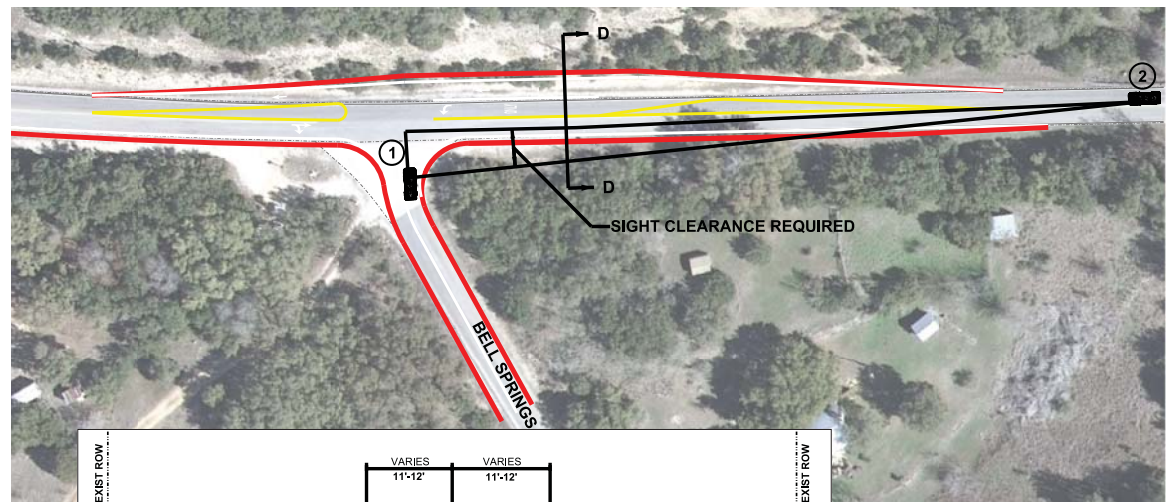
- Adjust geometry at intersection
- Clear obstructions in the sight path
- Addition of pavement striping

### Benefits:

- Improves sight distance and increases safety for all directions of traffic
- Improves driver recognition and awareness of oncoming traffic

### Considerations:

- May require additional right-of-way
- May require temporary or permanent easements
- May require removing visual obstructions such as trees, rock outcroppings, etc.
- Provide a space for left turning traffic, avoiding delay to right turning vehicles



# Potential Intersection Improvement Concepts



Hamilton Pool Road  
Safety Improvements Project

## Left Turn Lane

**Issue:** There are several intersections where vehicles turning left impede through traffic, putting the driver in danger of rear end collision.

### Improvement Alternatives:

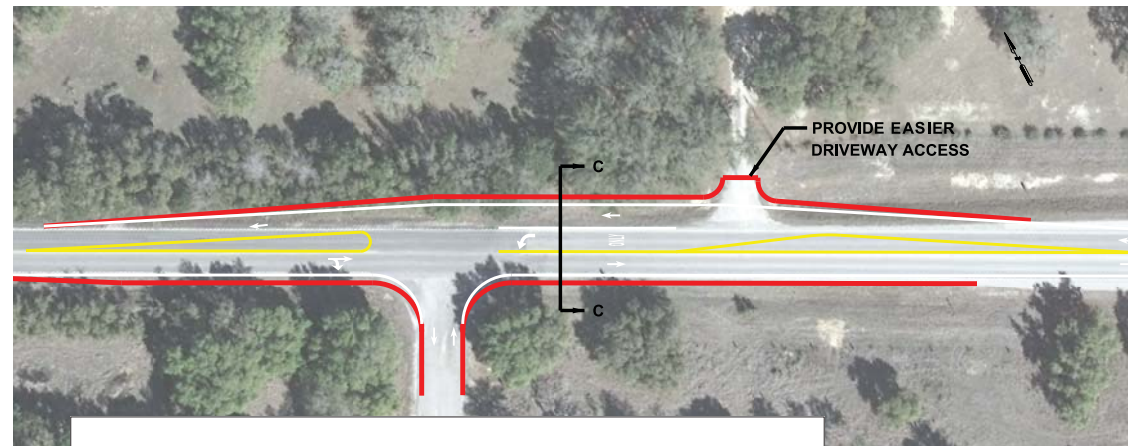
- Add left turn lane
- Clear obstructions in the sight path
- Additional signage

### Benefits:

- Reduces potential accidents
- Improves driving and EMS response time

### Considerations:

- May require additional right-of-way
- May require temporary or permanent easements
- May require removing visual obstructions such as trees, rock outcroppings, etc.



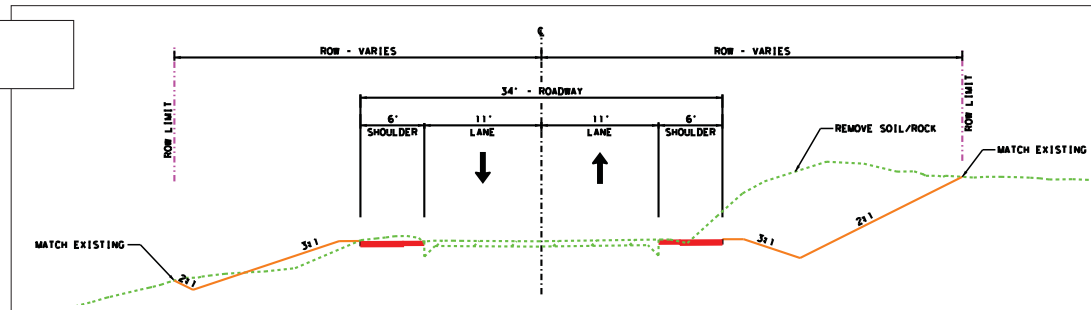
# Potential Typical Sections



## Hamilton Pool Road Safety Improvements Project

### TYPICAL SECTION 1

- 6 foot shoulders
- 10 foot clear zones
- Graded swale

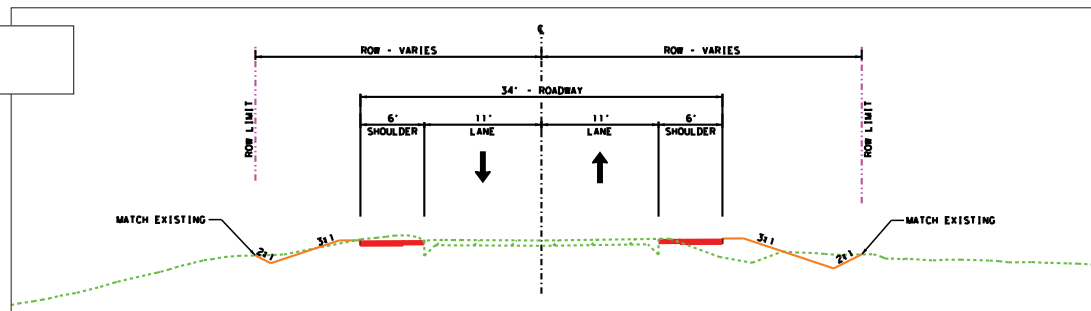


### Additional potential improvements would include:

- Tree & brush trimming and removal
- Improved roadway curved alignment, as needed
- Improved signage

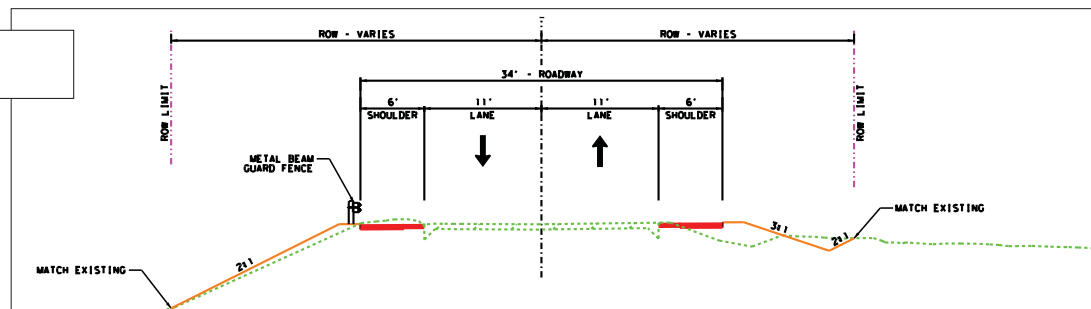
### TYPICAL SECTION 2

- 6 foot shoulders
- 10 foot clear zones
- Graded swale



### TYPICAL SECTION 3 with guardrail

- 6 foot shoulders
- 10 foot clear zones
- Graded swale
- Guardrail protection





# Hamilton Creek Bridge



## Hamilton Pool Road Safety Improvements Project

### Current Conditions:

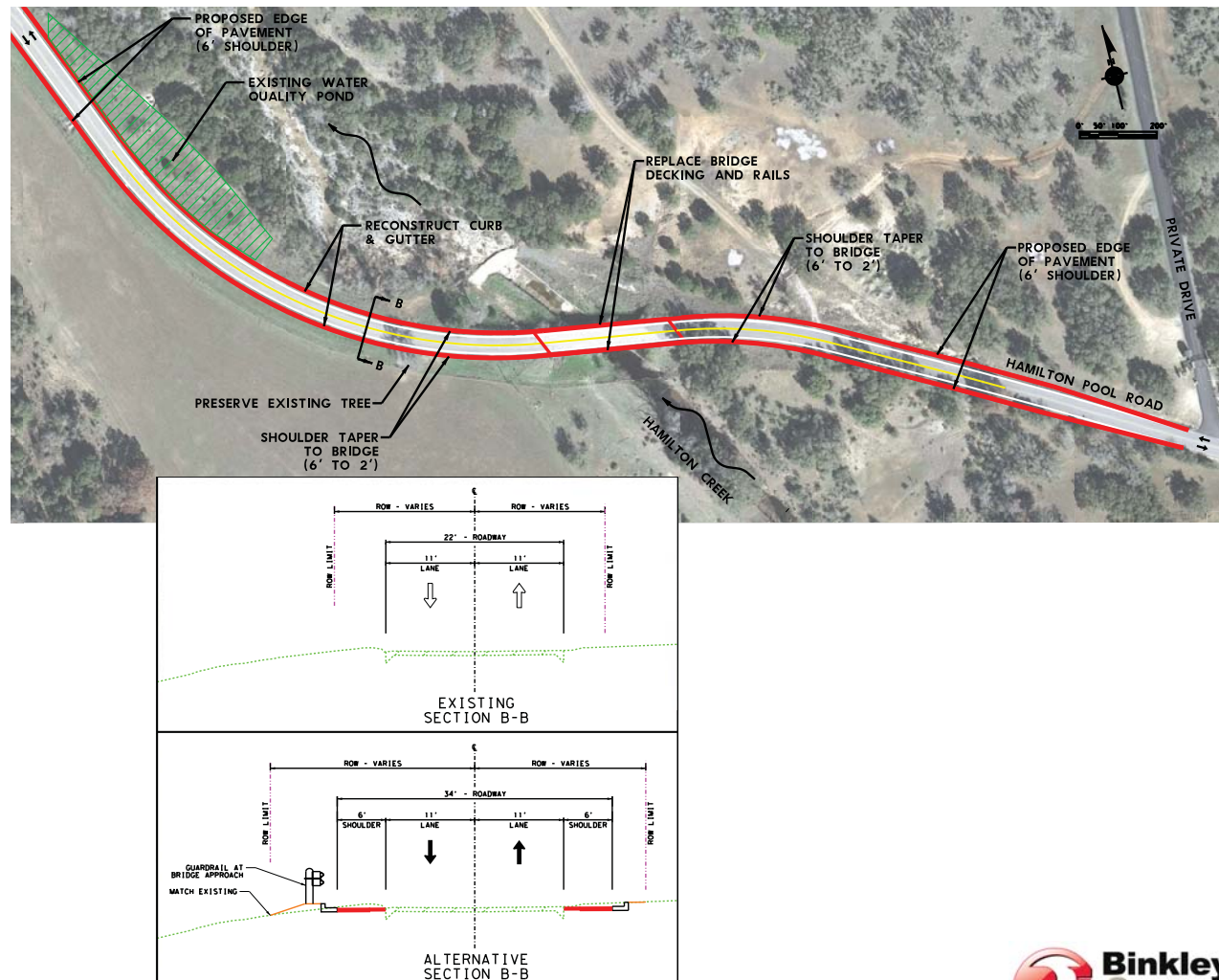
The Hamilton Creek bridge has shown deterioration during recent routine inspections. While the bridge is currently safe, the County will make improvements to be proactive in maintaining this structure.

### Proposed Improvements:

- Replace bridge decking
- Replace bridge rails
- Improvements to approaches on both sides of the bridge

### Bridge Analysis:

The on-going bridge inspection and analysis will provide a Bridge Report, which may suggest additional structure improvements.



# Hamilton Pool Park Entrance



## Hamilton Pool Road Safety Improvements Project

### Current Conditions:

The growing popularity of Hamilton Pool Park brings additional traffic to the area especially on weekends during the spring and summer. The additional vehicles create a waiting line to enter the park and often cause the road to become backed up or blocked to passing vehicles. Improvements are needed to provide safe and efficient passage around vehicles waiting to enter.

### Proposed Improvements:

- Addition of left and right turn lanes at park entrance
- Addition of shoulders near entrance

These lanes will shift visitor's vehicles out of the through lanes and provide the safe and efficient passage of vehicles past the park entrance.

