



COMPLETION STRATEGY UPDATE

BALCONES CANYONLANDS CONSERVATION PLAN AND
BALCONES CANYONLANDS PRESERVE



PERMIT AND PRESERVE

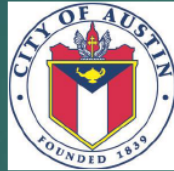
Federal Endangered Species Act

Permit (BCCP)

held by City of Austin and Travis County

PERMIT HOLDERS

Travis County
City of Austin



CONSERVATION PARTNERS

Travis Audubon Society
The Nature Conservancy
St Edwards University –
Wild Basin



MANAGING PARTNERS

Lower Colorado
River Authority
City of Sunset
Valley

OTHER PARTNERS

USFWS
City of Lakeway
Developers
Private Landowners

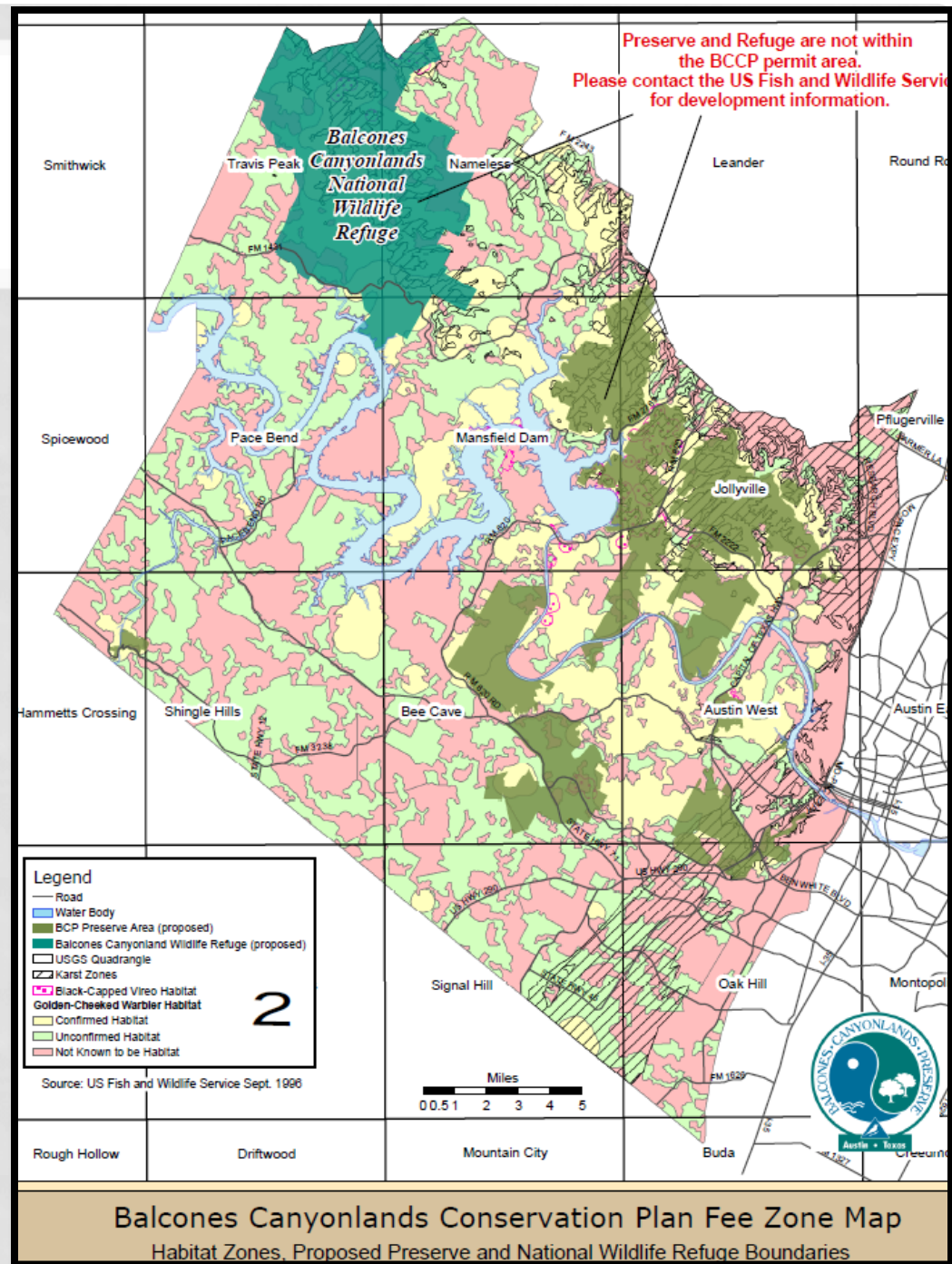
WHY PERMIT?

- **Balcones Canyonlands Conservation Plan (BCCP)**
 - facilitates **economic development** - gives project developers a streamlined Endangered Species Act compliance process
 - **Local solution** to a federal regulation
 - **Voluntary** participation
- **Developers and Landowners:**
 - **789** BCCP Habitat Determination Applications
 - **283 Participation Certificates on more than 12,600 acres**
 - PC process has facilitated \$4.5 **Billion** assessed value of those improvements to the local tax base
- **Public Infrastructure:** 236 public service projects

Travis County and City of Austin continued compliance with our permit enables us to offer this expedited service to our constituents

WHY PRESERVE?

- Permit *requires* habitat to offset development we facilitate ("take")
- Original recommendation 125,000 acres
- "Take" is permanent, so preserve must be permanent





PRESERVE STANDARDS

Acreage, features, locations, and habitat types
are defined in the Permit

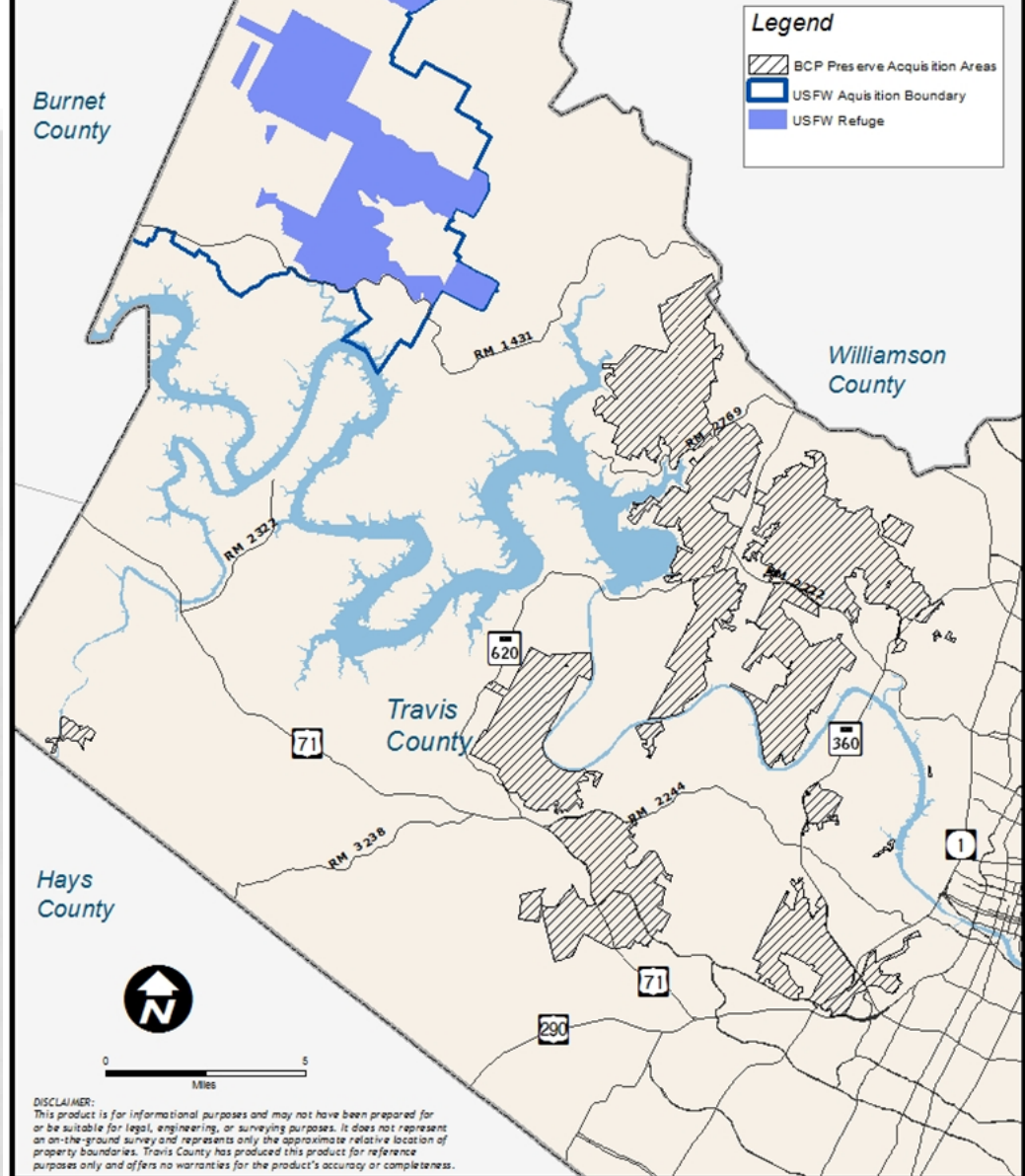
- habitat for *certain species in western Travis County*
- bird habitat within or adjacent to core preserves,
between Austin and USFWS National Wildlife Refuge
- **Minimums** 30,428 habitat acres within 7 planning units
AND 62 specific caves **PLUS**
- **Configuration** core preserves with less than 20% edge-
to-area ratio, limit inholdings and fragmentation **PLUS**
- **Management** guided by approved best practices

ORIGINAL PRESERVE ACQUISITION ZONE

Within 7 planning
areas (macrosites
or watersheds)

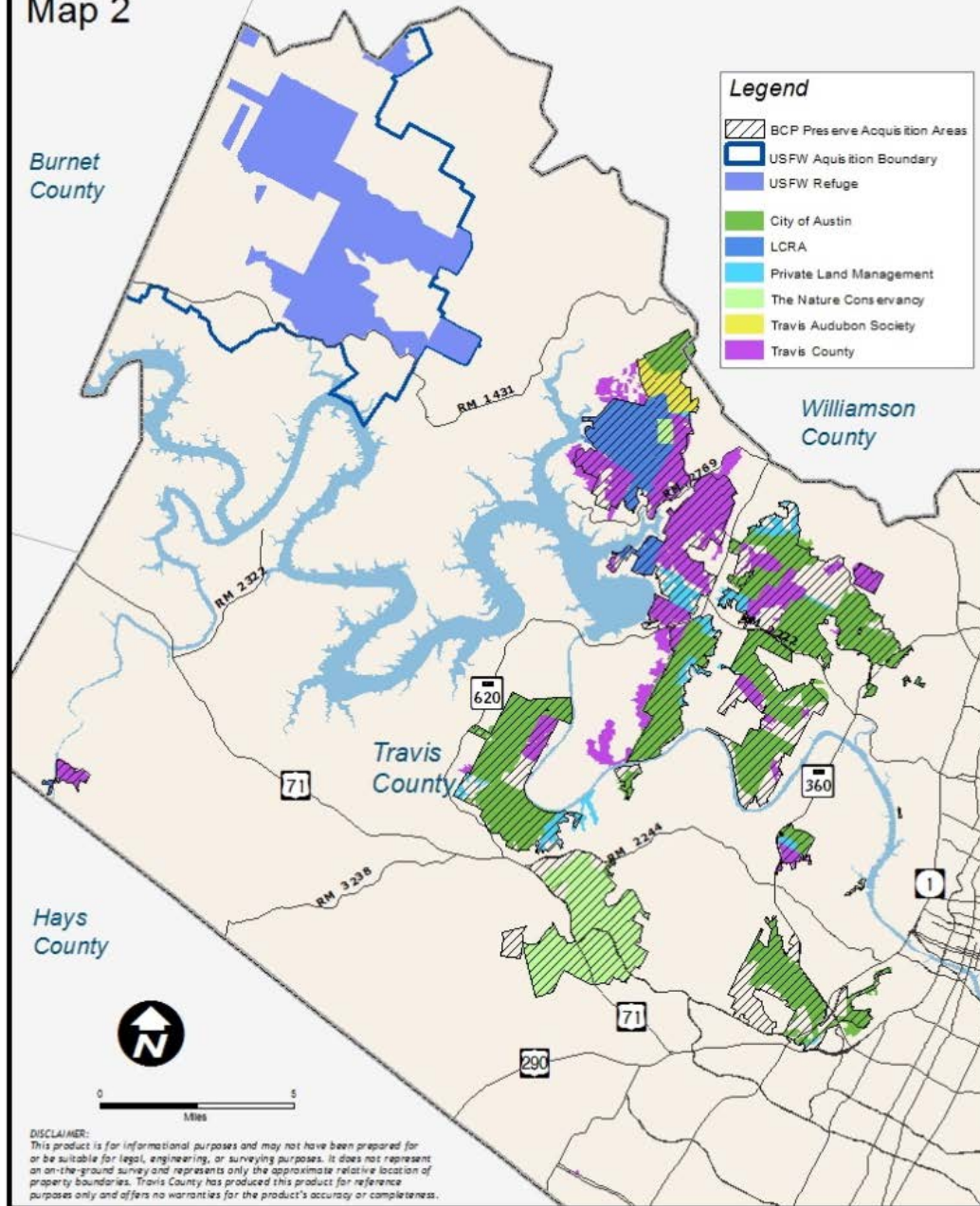
Total Acres
Potential
34,378

1996 Preserve Acquisition Zone Map 1



Current Preserve By Ownership

Map 2

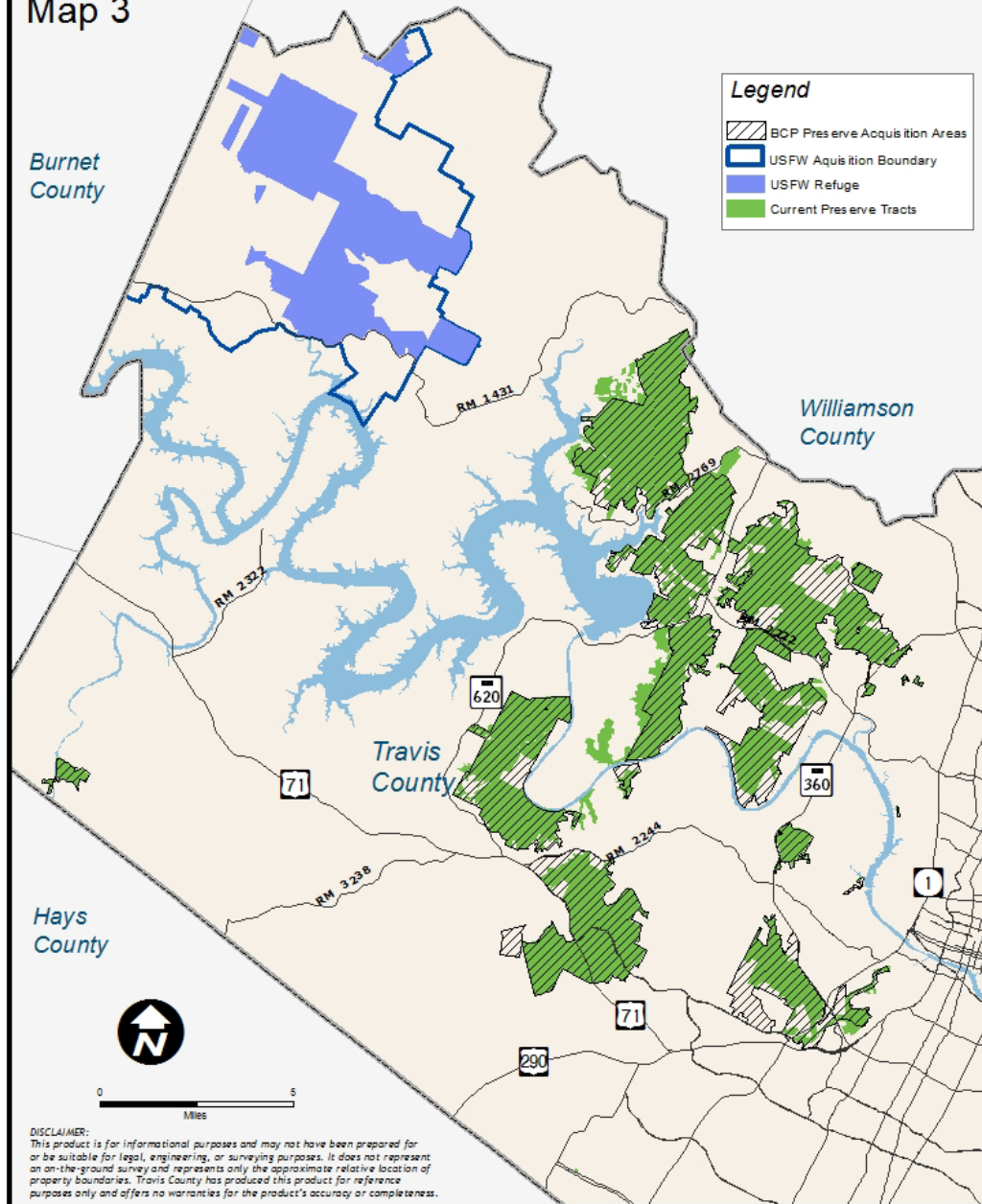


CURRENT
PRESERVES
BY
MANAGER

Total
30,540
acres

Current Preserve (All)

Map 3



ADJACENT AND ALTERNATE PRESERVES

Directly
adjacent
and/or
ecologically
connected

NAMED CAVES

Some within Preserve and some separate

Requirement – protect and manage to preserve environmental integrity, defined by surface and subsurface drainage basin and cave cricket foraging area

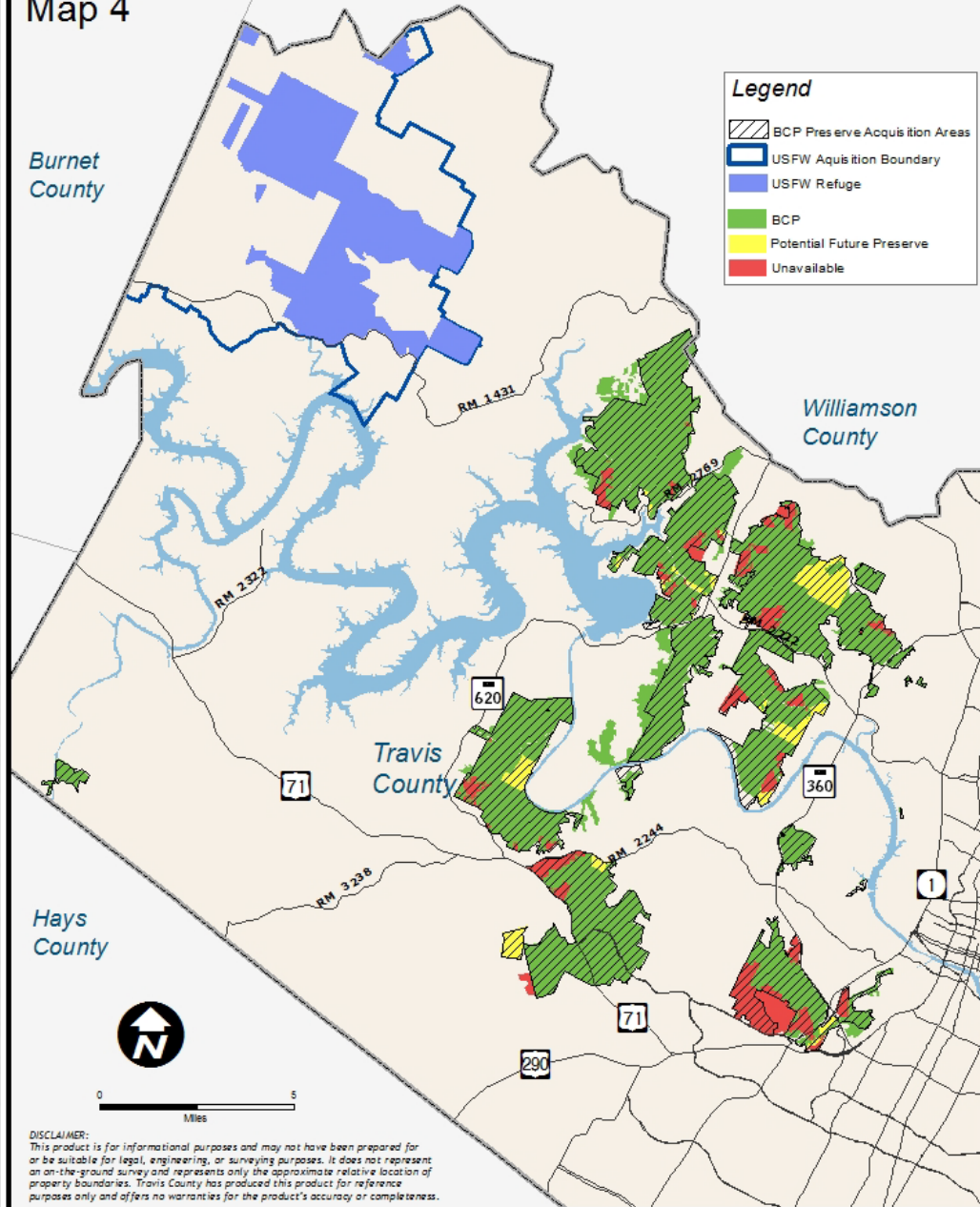
Substitution – if a named cave cannot be protected by BCCP Permit Holders, Permit allows substitution (Working Group in progress to define criteria and process)



Photo: Zara Environmental

Preserve and Issues 2014

Map 4



CONSTRAINTS FOR COMPLETION

Opportunity
Economy
Regulatory
Ecology

alternate sites have been
evaluated/protected to
meet criteria **and** address
constraints

PROGRESS TO DATE

What We Have So Far - Total Preserve Acres

- **28,207** Preserve Acres in the Acquisition Zone
- **2,333** Preserve Acres in Adjacent/Connected Areas
- **47 of 62** Named Caves

TRAVIS COUNTY LAND ACQUISITION COSTS

| Type | Acres | Travis Co Cost | Section 6 Grant (USFWS and TPWD) |
|---|-----------------|------------------------|----------------------------------|
| Acquisitions w/ Section 6 Grant Funds | 3,140.05 | \$23,049,995.55 | \$57,325,150.02 |
| Acquisition 1005 County Funds | 892.28 | \$51,663,063.56 | \$0 |
| TOTALS | 4,032.33 | \$74,713,059.11 | \$57,325,150.02 |

WHAT WE NEED

- **Approximate Needs** (Estimated 2011 - 2012)
 - **GCWA** Approximately 215 acres
 - **BCP Edge** “smoothing” TBD – dependent on available
 - **BCVI** 238 acres
 - **15 Named Caves** and/or Approved Substitute Features with acreage for surface and subsurface drainage protection
- **High Priority Sites** 1,924 acres
- **Compensate for Lost Sites** 3,648 acres

STRATEGY SUMMARY

- Bird Habitat and Edge-to-Area Analysis
- Pursue High Priority (Yellow) Sites as Available
- Pursue Remaining Cave Tracts
- Identify Suitable Substitution Features just in case
- Look at alternative sites with habitat and caves to compensate for lost lands and to improve the edge-to-area ratio
- Interim analyses and **Final Completion Report** to USFWS: approx. 5 years before Permit expires