



Travis County Commissioners Court Agenda Request

Meeting Date: August 29, 2013 WORK SESSION
Prepared By/Phone Number: David Salazar, 854-9555
Elected/Appointed Official/Dept. Head: Samuel T. Biscoe
Travis County Judge
Commissioners Court Sponsor: Judge Biscoe

AGENDA LANGUAGE:

DISCUSS TRANSPORTATION EXCELLENCE FOR THE 21ST CENTURY (TEX-21) AND STATE AND NATIONAL TRANSPORTATION POLICY.

BACKGROUND/SUMMARY OF REQUEST AND ATTACHMENTS:

STAFF RECOMMENDATIONS:

ISSUES AND OPPORTUNITIES:

FISCAL IMPACT AND SOURCE OF FUNDING:

REQUIRED AUTHORIZATIONS:

2013 TEX-21 OFFICERS

TIM WELCH, CHAIR
North Richland Hills Councilmember

David Blackburn, Vice Chair
Temple City Manager

ROSE CANNADAY, VICE CHAIR
Irving Councilmember

KEITH SELF, VICE CHAIR
Collin County Judge

JANE SHANG, VICE CHAIR
El Paso Deputy City Manager

ADAN FARIAS, VICE CHAIR
Pharr Mayor Pro Tem

Mickey Parson, Vice Chair
Granbury Councilmember

GARY FICKES, VICE CHAIR
Tarrant County Commissioner

PAT MCCOY, SECRETARY
Bowie County Commissioner

JOHN WILLIS, TREASURER
Garland Councilmember

2013 VOTING MEMBERS:

ADDISON * Bruce Arfsten
ALICE * Dorella Elizondo
ALLEN * Peter Vargas
ANNA * Michael Crist
ATOKA, OK * Charles McCall, III
BOWIE COUNTY * Pat McCoy
COLLEYVILLE * Jody Short
COLLIN COUNTY * Keith Self
COPPELL * Karen Hunt
CROCKETT * Wayne Mask
DALLAS COUNTY * Mike Cantrell
DECATUR * Martin Woodruff
DENISON * Jared Johnson
DENTON * Pete Kamp
DURANT, OK * Jerry Tomlinson
EL PASO * Jane Shang
EULESS * Mary Lib Saleh
FOREST HILL * Jo Pirtle
GARLAND * John Willis
GRANBURY * Mickey Parson
GRAPELAND * George Pierson
GRAYSON COUNTY * Drue Bynum
HOPKINS COUNTY * Chris Brown
IRVING * Rose Cannaday
KENNEDEALE * John Clark
KILLEEN * George Lueck
MANSFIELD * Stephen Lindsey
MCKINNEY * Brian Loughmiller
MIDLOTHIAN * Bill Houston
MOUNT PLEASANT * Mike Ahrens
MOUNT VERNON * Margaret Sears
NORTH RICHLAND HILLS * Oscar Trevino
PHARR * Adan Farias
PORT OF BROWNSVILLE * Eduardo Campirano
RHOME * Chris Moore
RICHARDSON * Laura Maczka
ROCKWALL * Rick Crowley
ROCKWALL COUNTY * David Magness
SHERMAN * Carolyn S. Wacker
SOUTHLAKE * Pamela Muller
STEPHENVILLE * Mark Kaiser
SULPHUR SPRINGS * Marc Maxwell
TARRANT COUNTY * Gary Fickes
TEXARKANA * Bob Bruggeman
TEMPLE * David Blackburn
TEXAS AIRPORTS COUNCIL * John Happ
TITUS COUNTY * Brian Lee
TYLER COUNTY * Martin Nash
WAXAHACHIE * Paul Stevens
WISE COUNTY * Bill McElhane
WOODVILLE * Mandy Risinger
WYLIE * Mindy Manson

2013 ASSOCIATE MEMBERS:

AAA TEXAS * Anne O'Ryan
BOSC, INC. * Rick Menchaca
HARRISON, WALKER, & HARPER, L.P.
Chip Harper
PARIS EDC * Steve Gilbert

2013 RESOURCE AGENCIES:

ARK-TEX COUNCIL OF GOVERNMENTS
L.D. Williamson
EL PASO METROPOLITAN PLANNING
ORGANIZATION * Roy Gilyard
HIDALGO COUNTY METROPOLITAN
PLANNING ORGANIZATION * Andrew
Canon
SW ARKANSAS PLANNING &
DEVELOPMENT DISTRICT * Renee Dycus
TEXAMERICAS CENTER * BILL CORK
TEXAS SOUTHERN UNIVERSITY
Carroll Robinson
TEXAS TRANSPORTATION INSTITUTE
Dennis Christiansen

July 18, 2013

The Honorable Samuel Biscoe
County Judge
Travis County
P.O. Box 1748
Austin, TX 78767

RE: Joining as a Member of Transportation EXcellence for the 21st Century (TEX-21) for FYE 2014

Dear: Judge Biscoe:

On behalf of Transportation EXcellence for the 21st Century (TEX-21), we would like to formally invite Travis County to join TEX-21 in the capacity of a Member for FYE 2014. The growth and development of TEX-21 is proof-positive that communities from numerous states are willing to work together for equitable multi-modal transportation legislation that is safe, efficient and effective. **We believe that the County would be a significant partner and milestone in our efforts to improve the regional and multistate transportation infrastructure and policy.**

Membership with TEX-21 is based upon an annual dues structure and is according to the population levels gathered during the 2000 Census. The current dues structure is a **15% reduction** of TEX-21's previous dues format, which was revised prior to FYE 2010, which is reflective of the economic downturn which greatly impacted cities and counties across Texas and our nation. Membership dues are a one-time annual fee and in light of the Cities 2000 population, the Cities dues for FYE 2014 would be \$ 21,250. Please find TEX-21's dues table for municipalities and cities for your review.

TEX-21 is a 501(c)(6) not-for-profit coalition dedicated to bringing together transportation minded individuals in a grassroots, collective effort to improve multimodal transportation and infrastructure needs throughout the region. Since its formation in 2001, TEX-21 has provided a platform for members to discuss the challenges and potential remedies facing all levels of government. TEX-21 aims to proactively pursue the best interests of the region which include, but are not limited to, the States of Texas, Arkansas and Oklahoma.

TEX-21 has made remarkable strides during its short existence, quickly becoming recognized as the preeminent voice regarding Texas' transportation issues. Perhaps the best testament to our success in the transportation arena is the consistent support we have received from the local, state and federal levels of government. Our cooperative approach has consistently gained praise from policymakers at each level of government.

By becoming a member of TEX-21, Travis County will be listed on our official letterhead, publications and all correspondence. **The County would have a total of three (3) representatives, and one primary voting member**, who would be listed on these publications.

TEX-21 is a member-driven, policy organization, and as such, has voting equity among its membership. Thus cities and counties, irrespective of size, are each allowed the same weight with their vote and voice. This is a unique feature and quality of TEX-21.

Federal Support

We have successfully developed and maintained a TEX-21 Congressional Caucus that **includes the entire 34-member Texas Congressional Delegation**, and as a result, we have been able to sustain a strong vocal presence in Washington, D.C.

In addition to our Congressional Caucus, we have established a **TEX-21 Congressional Caucus Staff Work Group**, which consists of key staff members of our Congressional Caucus members. Through this group, TEX-21 members have an open line of communication with the offices of the entire Texas Congressional Delegation. The TEX-21 Congressional Caucus Staff Work Group meets regularly in Washington, D.C. to receive valuable briefings from TEX-21 on current transportation issues that are important to the State of Texas. TEX-21 members are welcome and encouraged to attend these meetings and interact with the Staff Work Group.

State Support

At the state level, we have created and maintained a **TEX-21 Legislative Transportation Caucus** which has been particularly productive. Currently, **100 members of the State Legislature** (including Arkansas) are active members of our Legislative Caucus which continues to show the strong support for TEX-21 and mobility in the State's Capitol. TEX-21 meets on a quarterly basis in various parts of the State and with TEX-21's Legislative Caucus Staff Work Group in Austin. Additionally, our Annual Meeting is held in conjunction with the Annual Transportation and Infrastructure Summit in Irving, Texas.

The **Standing Committees of TEX-21**, which are portions of the membership that concentrate on a specific subject matter area, include – Federal, State, Regional & Local, Transit, Public Works, Aviation, and Public Works – are continuing to be heavily involved in the 83rd Legislative Session and have remained actively engaged in the work of the 113th Congress.

TEX-21 members also come together in Austin for regular **Quarterly Meetings with the Executive Director of TxDOT and his key management staff**. These quarterly sessions provide TEX-21 members a valuable opportunity to discuss a variety of transportation issues with TxDOT's management and give TxDOT insight to important transportation issues from the TEX-21 members around the state.

Corridor Focus

TEX-21 has also endeavored to create a new way of thinking for cities and counties along other important transportation corridors and existing infrastructure. By approaching the challenges and opportunities along a corridor in a way that benefits everyone on the corridor, the resulting collaborative efforts can produce a far better result for everyone. Along that approach, the TEX-21 Chairman has formed the U.S. 75/69 Corridor Task Force, the Interstate 30 Corridor Task Force and the U.S. 287 Corridor Task Force.

Challenges

The coming years will be critical for the future of transportation in Texas, Arkansas, Oklahoma and our nation. The expansion of the Panama Canal will be complete in the year 2015, and with it will come container ships that are fully three times the size of current container ships entering the Gulf of Mexico and our East Coast ports. This influx of cargo alone, and its impact on future mobility, is reason enough for us to come together to adequately prepare our multi-modal network. In December 2010, TEX-21 was invited by the leadership of the Panama Canal for an exclusive hardhat tour of the ongoing expansion and for us to deliver a briefing to many of their developers and government dignitaries in country.

The financing, maintenance, and expansion of the State's transportation infrastructure will require much creativity and collaboration. At the Federal level, it is of paramount importance for states to speak with "One Voice" regarding the many important transportation issues we face across all modes. TEX-21 continues to represent the collective voice of Texas, Oklahoma, and Arkansas cities, counties, seaports, and transit systems in Austin and Washington D.C., and we encourage you to become actively involved in this important work.

TEX-21's Executive Committee, along with its membership across the States of Texas, Arkansas and Oklahoma consider your membership and participation with Transportation EXcellence for the 21st Century a significant milestone in our organization. As we move forward with our endeavors, we look forward to the leadership, support and partnership with the Travis County for the betterment of multi-modal transportation and infrastructure policy within the region, across the State and throughout the multi-state regions of Texas, Oklahoma and Arkansas.

Should you have any questions please do not hesitate to contact our public policy consultants, Dean International, Inc., at 214.750.0123, specifically Mr. Matt Brasseaux at mbrasseaux@dean.net or Mr. Russell Schaffner at rschaffner@dean.net.

With Highest Regards,



Tim Welch
Chair, TEX-21
Councilmember,
City of North Richland Hills



TEX-21

Transportation EXcellence
for the 21st Century



***Better Mobility
Through
Better Policy***

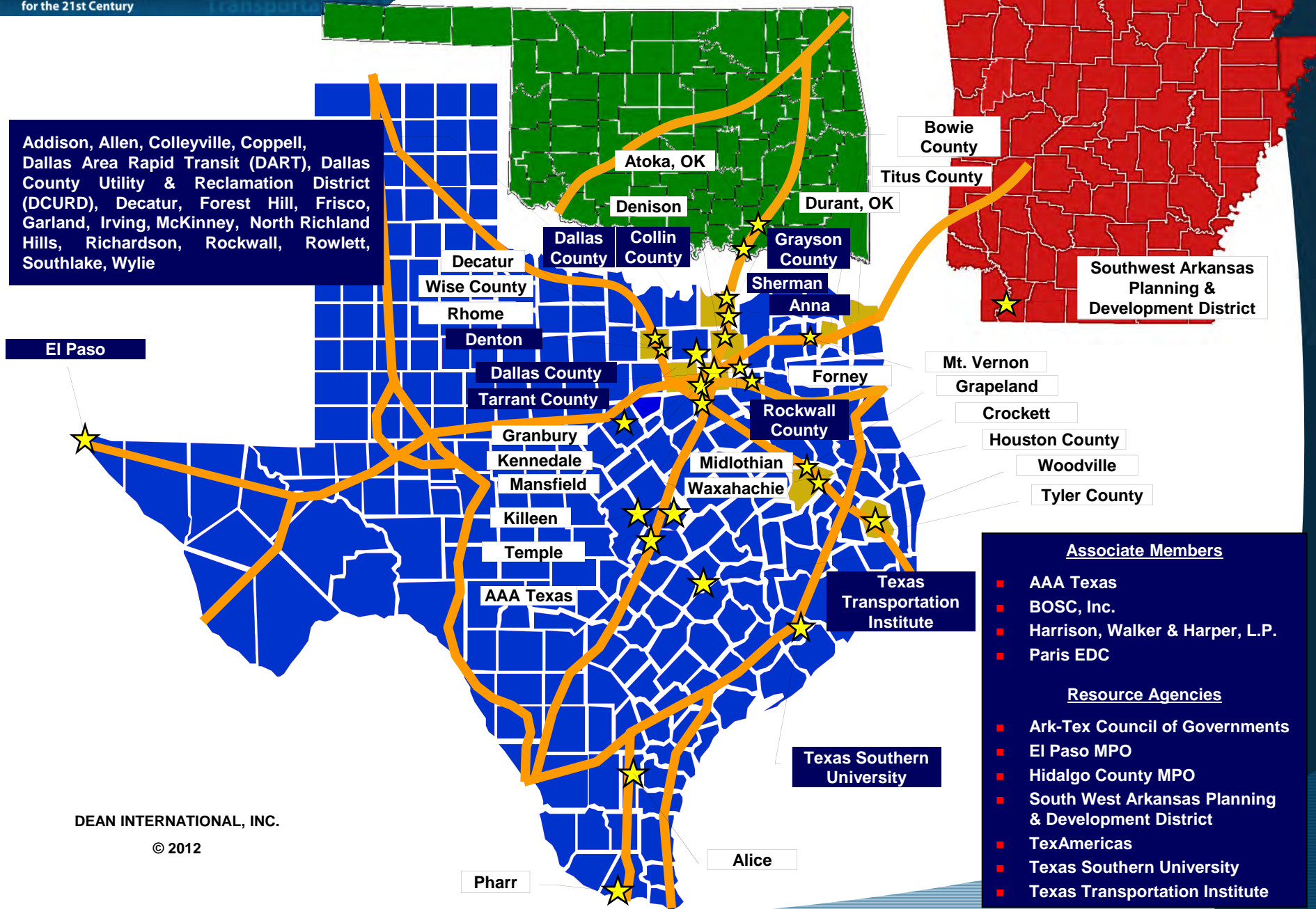


TEX-21 History

- During the 2nd Annual Transportation and Infrastructure Summit in Irving, Texas, elected officials and transportation authorities united together to form a grass roots coalition with the purpose of developing a cohesive vision for the future of transportation
- TEX-21 has grown to include numerous member cities, counties, transit and port authorities, international trade corridors, universities and other industry leaders, encompassing approximately 60% of Texas' 25,145,561 population and with new members in Arkansas and Oklahoma, a growing portion of that state as well.

Members & Partners

Addison, Allen, Colleyville, Coppell, Dallas Area Rapid Transit (DART), Dallas County Utility & Reclamation District (DCURD), Decatur, Forest Hill, Frisco, Garland, Irving, McKinney, North Richland Hills, Richardson, Rockwall, Rowlett, Southlake, Wylie



- Associate Members**
- AAA Texas
 - BOSC, Inc.
 - Harrison, Walker & Harper, L.P.
 - Paris EDC
- Resource Agencies**
- Ark-Tex Council of Governments
 - El Paso MPO
 - Hidalgo County MPO
 - South West Arkansas Planning & Development District
 - TexAmericas
 - Texas Southern University
 - Texas Transportation Institute

DEAN INTERNATIONAL, INC.

© 2012

Members of TEX-21:

Partnering Together for Transportation Excellence

- Addison
- Alice
- Allen
- Anna
- Atoka, OK
- Colleyville
- Coppell
- Crockett
- Dallas
- Decatur
- Denison
- Denton
- Durant, OK
- El Paso
- Euless
- Forest Hill
- Forney
- Garland
- Granbury
- Grapeland
- Irving
- Kennedale
- Killeen
- Mansfield
- Midlothian
- McKinney
- Mt. Pleasant
- Mt. Vernon
- N. Richland Hills
- Port of Brownsville
- Pharr
- Rhome
- Richardson

- Rockwall
- Rowlett
- Sherman
- Southlake
- Stephenville
- Sulphur Springs
- Temple
- Texarkana
- Waxahachie
- Woodville
- Wylie
- Collin County
- Bowie County
- Dallas County
- Grayson County
- Hopkins County
- Rockwall County
- Tarrant County
- Titus County
- Tyler County
- Wise County
- Ark-Tex Council of Governments
- Paris EDC
- AAA Texas
- BOSC, Inc.
- Harrison, Walker & Harper, L.P.
- El Paso MPO
- Hidalgo County MPO
- TexAmericas
- Texas Airports Council
- Texas Southern University
- Texas Transportation Institute

TEX-21 Caucuses

- **Congressional Caucus in Washington, DC:** TEX-21 has continually maintained 100% Congressional participation and will seek to maintain this with the three new members of the Texas delegation. In addition to the member's participation, the staff members that handle transportation issues for each of these Caucus members have united to form a TEX-21 Congressional Caucus Staff Workgroup. Workshops were recently held for the staff members of the Congressional Caucus with presentations on transit and passenger rail and their impact on Texas. Other meetings provided presentations on seaports, freight rail, and the TEX-21 Legislative program for the 112th Congress.
- **Legislative Caucus:** Our TEX-21 Legislative Caucus currently includes 94 members (22 Senators and 72 Representatives). Workshops for the staff members of the Caucus are conducted quarterly. Meetings have focused on all modes of transportation at both the State and Federal levels and the TEX-21 Legislative targets.
- **Arkansas:** Working with key leaders in the Arkansas General Assembly and members of the Arkansas Congressional Delegation, TEX-21 welcomes state and federal elected officials from Arkansas into its enthusiastically engaged Congressional and Legislative Caucuses. Forging relationships at the local, state, and federal levels through facilitating results-driven dialogue among stakeholders, TEX-21 seeks to continue its significant and positive impact on transportation policy in Little Rock and Washington."

TEX-21 Congressional Caucus 113th Congress

Senatorial Co-Chairs



John Cornyn
US Senate TX

Congressional Co-Chairs



Michael D. Burgess
TX District 26



John Culberson
TX District 7



Eddie Bernice Johnson
TX District 30



Randy Neugebauer
TX District 19



Pete Sessions
TX District 32

TEX-21 Congressional Caucus 113th Congress

Congressional Members



Joe Barton
TX District 6



Kevin Brady
TX District 8



John R. Carter
TX District 31



Mike Conaway
TX District 11



Henry Cuellar
TX District 28



Lloyd Doggett
TX District 35



Blake Farenthold
TX District 27



Bill Flores
TX District 17



Louie Gohmert
TX District 1



Kay Granger
TX District 12



Al Green
TX District 9



Gene Green
TX District 29

TEX-21 Congressional Caucus 113th Congress

Congressional Members



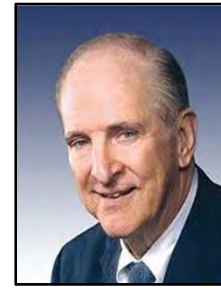
Ralph M. Hall
TX District 4



Jeb Hensarling
TX District 5



Ruben Hinojosa
TX District 15



Sam Johnson
TX District 3



Sheila Jackson Lee
TX District 18



Kenny Marchant
TX District 24



Michael McCaul
TX District 10



Pete Olson
TX District 22



Ted Poe
TX District 2



Lamar Smith
TX District 21



Steve Stockman
TX District 36



Mac Thornberry
TX District 13



Marc Veasey
TX District 33



Randy Weber
TX District 14



Roger Williams
TX District 25

TEX-21 Legislative Caucus

State Senators



Senator
 John Carona
 TX District 16



Senator
 Wendy Davis
 TX District 10



Senator
 Robert Deuell
 TX District 2



Senator
 Rodney Ellis
 TX District 13



Senator
 Craig Estes
 TX District 30



Senator
 Kelly Hancock
 TX District 9



Senator
 Glen Hegar
 TX District 18



Senator
 Eddie Lucio, Jr
 TX District 27



Senator
 Jane Nelson
 TX District 12



Senator
 Dan Patrick
 TX District 21



Senator
 Ken Paxton
 TX District 8



Senator
 Kel Seliger
 TX District 31



Senator
 Larry Teague
 AR District 20



Senator
 Carlos Uresti
 TX District 19



Senator
 Leticia Van De Putte
 TX District 26



Senator
 Kirk Watson
 TX District 14



Senator
 Royce West
 TX District 23



Senator
 John Whitmire
 TX District 15



Senator
 Tommy Williams
 TX District 4



Senator
 Judith Zaffirini
 TX District 21

TEX-21 Legislative Caucus

State Representatives



Representative
Alma Allen
TX District 131



Representative
Roberto Alonzo
TX District 104



Representative
Trent Ashby
TX District 57



Representative
Jimmie Don Aycock
TX District 54



Representative
Cecil Bell
TX District 3



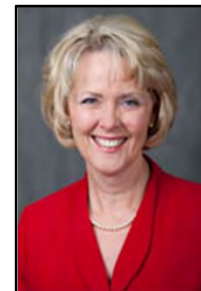
Representative
Dwayne Bohac
TX District 138



Representative
Dennis Bonnen
TX District 25



Representative
Dan Branch
TX District 108



Representative
Cindy Burkett
TX District 101



Representative
Angie Chen Button
TX District 112



Representative
William Callegari
TX District 132



Representative
Garnet Coleman
TX District 147



Representative
Bryon Cook
TX District 8



Representative
Bruce Cozart
AR District 28



Representative
Myra Crownover
TX District 64

TEX-21 Legislative Caucus

State Representatives



Representative
John Davis
TX District 129



Representative
Joseph Deshotel
TX District 22



Representative
Gary Elkins
TX District 135



Representative
Joe Farias
TX District 118



Representative
Jessica Farrar
TX District 148



Representative
Allen Fletcher
TX District 130



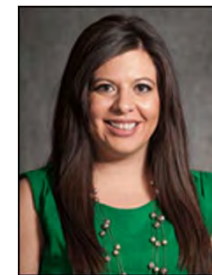
Representative
Dan Flynn
TX District 2



Representative
Charlie Geren
TX District 99



Representative
Helen Giddings
TX District 109



Representative
Mary Gonzales
TX District 75



Representative
R.D. "Bobby" Guerra
TX District 41



Representative
Ryan Guillen
TX District 31



Representative
Patricia Harless
TX District 126



Representative
Linda Harper-Brown
TX District 105



Representative
Harvey Hilderbran
TX District 53

TEX-21 Legislative Caucus

State Representatives



Representative
 Bryan Hughes
 TX District 5



Representative
 Jim Keffer
 TX District 60



Representative
 Phil King
 TX District 61



Representative
 Lois Kolkhorst
 TX District 13



Representative
 Matt Krause
 TX District 93



Representative
 Jodie Laubenberg
 TX District 89



Representative
 George Lavender
 TX District 1



Representative
 Armando Martinez
 TX District 39



Representative
 Ruth Jones McClendon
 TX District 120



Representative
 Walls McCrary
 AR District 15



Representative
 Jose Menendez
 TX District 124



Representative
 Rick Miller
 TX District 26



Representative
 Geanie Morrison
 TX District 30



Representative
 Rob Orr
 TX District 58



Representative
 John Otto
 TX District 18



Representative
 Diane Patrick
 TX District 94



Representative
 Larry Phillips
 TX District 62



Representative
 Joe Pickett
 TX District 79

TEX-21 Legislative Caucus State Representatives



Representative
Jim Pitts
TX District 10



Representative
John Raney
TX District 14



Representative
Bennett Ratliff
TX District 115



Representative
Richard Raymond
TX District 42



Representative
Debbie Riddle
TX District 150



Representative
Dustin Roberts
OK District 21



Representative
Eddie Rodriguez
TX District 51



Representative
Ralph Sheffield
TX District 55



Representative
Wayne Smith
TX District 128



Representative
Phil Stephenson
TX District 85



Representative
Van Taylor
TX District 66



Representative
Senfronia Thompson
TX District 141



Representative
Armando Walle
TX District 140



Representative
James White
TX District 19

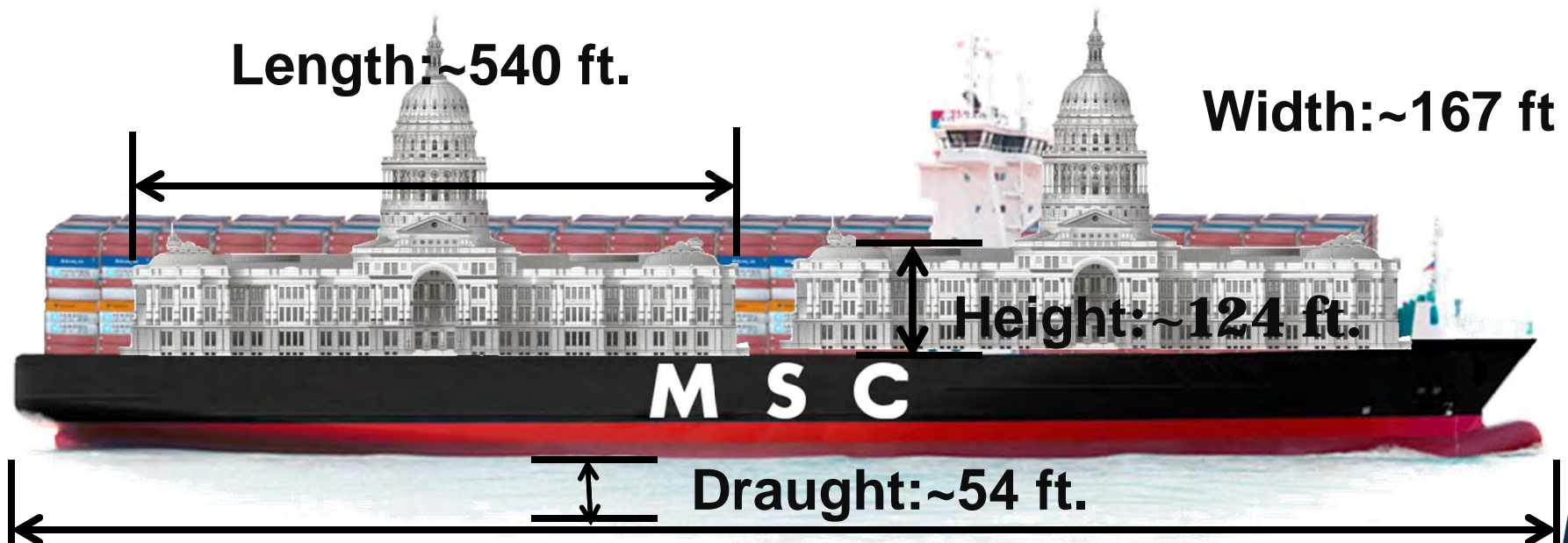


Representative
Bill Zedler
TX District 96

2013 Legislative Priorities

- Support ending or reducing diversions, starting with funding DPS out of general revenues and not transportation revenues.
- Support regional rail initiatives.
- Monitor legislation addressing the effects of hydraulic fracturing causing the deterioration of the states infrastructure.
- Pursue legislation that reduces the municipal responsibility for utility relocations cost for private sector projects.
- Support legislation encouraging high-speed intercity passenger rail and airport connectivity through private sector initiatives.
- Support legislation that readies the State of Texas for the Panama Canal Expansion in Spring 2015.
- Support legislation expanding the transportation and infrastructure funding options
 - Linear Transportation Reinvestment Zones

Panama Expansion



MSC Beatrice: 14000 TEUs

MSC: Mediterranean Shipping
Company

*35- 1.5 mile long unit trains to
unload

Length: ~1200 ft.

Capitol Space: ~9845600 ft.³

Space in TEUs: ~7239.5
TEUs

Panama Expansion

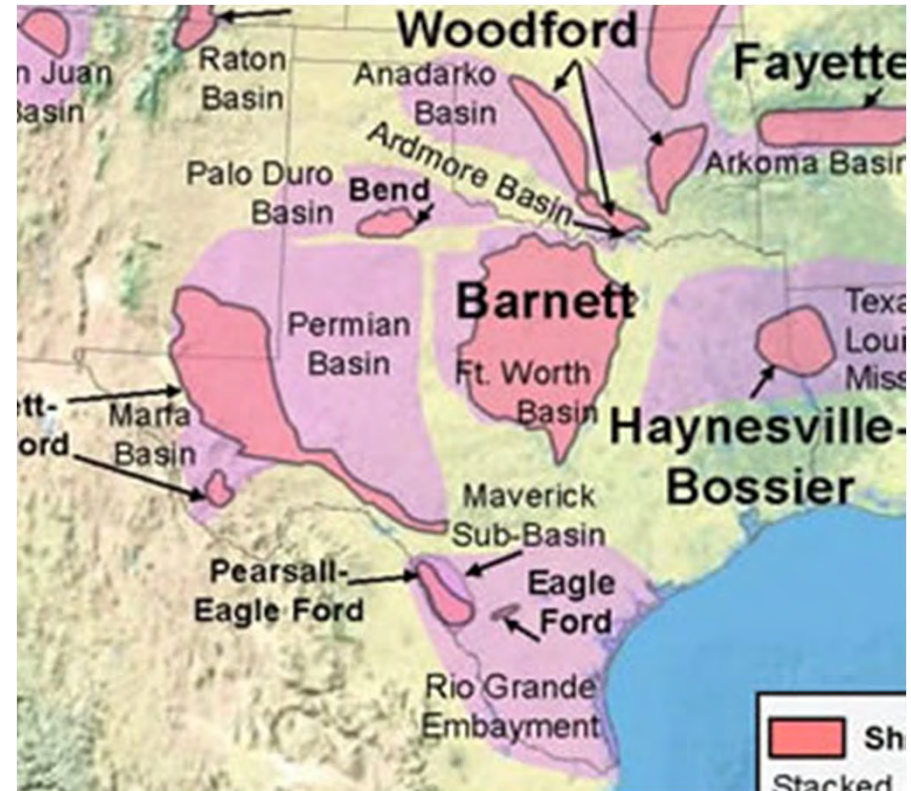
- “Triple E” is derived from the class’s three design principles:
 - Economy of Scale
 - Energy Efficient
 - Environmentally Improved
- The Triple E class ships are the worlds largest ships:
 - 1,312 ft. Long
 - 194 ft. Wide
 - Capable of moving 18,000 TEU’s
- After the current expansion is complete in 2015, the process for another expansion will begin to accommodate for the Triple E Vessels .
- The first shipment of new vessels is due on June 28, 2013.



**The Maersk Triple E
class**

Texas Natural Gas

- Texas today produces roughly 30% of US natural gas and roughly 30% of US oil production.
- If Texas was a country, it would rank as the 14th largest oil producing country and the 3rd largest natural gas producing country.
- Projections show that the US will surpass Saudi Arabia in oil and gas production by 2020.
- Since the development of the Eagle Ford Shale in 2008, natural gas production has tripled in Texas.



Panama Canal Effects on Natural Gas

- Q-Max Vessels:
 - The “Q” stands for Qatar and the “Max” stands for the maximum size of ship that can dock at the LNG terminals in Qatar
- which are named after the state of Qatar for their tremendous amount of oil production are:
 - 1,132 ft. long
 - 177 ft. wide
- There are currently 14 Q-Max Vessels in operation.
- Q-Max Vessels are capable of handling 260,000 cubic meters of natural gas.



Q-Max Vessel





TEX-21

**Transportation EXcellence
for the 21st Century**



***Better Mobility
Through
Better Policy***

