



Travis County Commissioners Court Agenda Request

Meeting Date: August 13, 2013

Prepared By: Sarah Sumner **Phone #:** (512) 854-7687

Division Director/Manager: Anna Bowlin, Division Director, Development Services and Long Range Planning

Department Head: Steven M. Manilla, P.E., County Executive-TNR

Sponsoring Court Member: Commissioner Daugherty, Precinct Three

AGENDA LANGUAGE: Consider and take appropriate action on a plat for recording Montebella Section 2 Final Plat (Short form plat, 3 single family lots on 3.07 acres on Cirrus Drive in no City's ETJ) in Precinct Three.

BACKGROUND/SUMMARY OF REQUEST:

This is a replat of lots 15-19 Block DDD of Montebella that were vacated in 2011 and replatted as larger lots. Water will be provided by Deer Creek Water Company, waste water will be on site septic systems, parkland fees of \$599.00 have been paid and no fiscal is required. This plat is located in Travis County and no other jurisdiction.

STAFF RECOMMENDATIONS:

As this final plat meets all Travis County standards, TNR staff recommends approval of the plat.

ISSUES AND OPPORTUNITIES:

Staff has not received any inquiries at this time.

FISCAL IMPACT AND SOURCE OF FUNDING:

NA

ATTACHMENTS/EXHIBITS:

Location Map, Proposed Plat, Precinct Map.

REQUIRED AUTHORIZATIONS:

Cynthia McDonald	Financial Manager	TNR	(512) 854-4239
Steven M. Manilla	County Executive	TNR	(512) 854-9429
Anna Bowlin	Division Director	TNR	(512) 854-7561

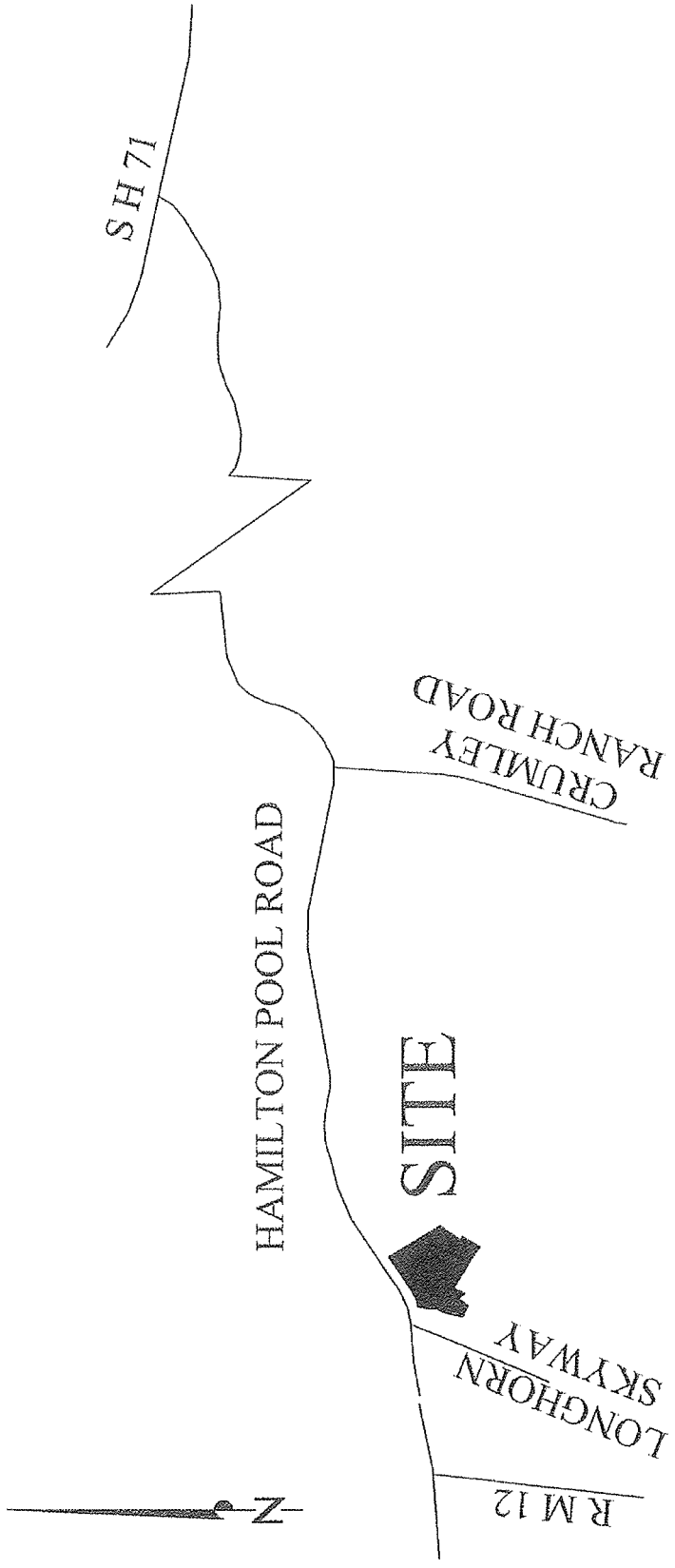
CC:

Sarah Sumner	Planner	TNR	(512) 854-7687

CD:AB:ss

1101 - Development Services Long Range Planning - Montebella Section Two

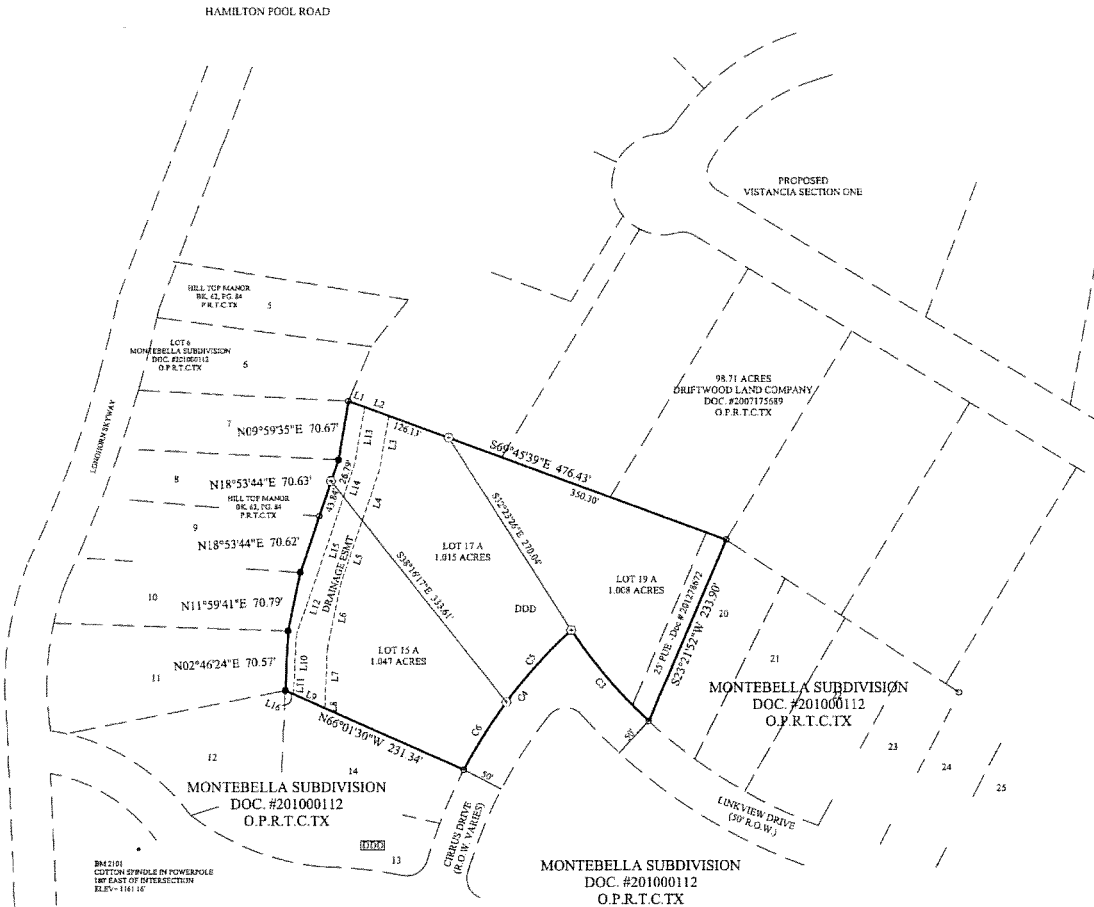
VICINITY MAP



NOT TO SCALE



1" = 100'
 JUAN RODRIGUEZ SURVEY NO. 42
 TRAVIS COUNTY, TEXAS
 JANUARY 2013



LINE	BEARING	DISTANCE
L1	S69°45'39"E	20.32
L2	S69°45'39"E	30.49
L3	S89°59'35"W	65.52
L4	S18°53'44"W	74.52
L5	S18°53'44"W	67.61
L6	S11°59'41"W	77.68
L7	S02°46'24"W	66.93
L8	S02°47'51"W	4.47
L9	N66°01'33"W	40.51
L10	S02°46'24"W	66.93
L11	S02°47'51"W	3.88
L12	S19°32'05"W	76.46
L13	S89°59'35"W	68.61
L14	S18°53'44"W	72.19
L15	S18°53'44"W	65.25
L16	N66°01'33"W	10.72

C3	600.00'	141.62'	141.29'	N40°13'40"W	13°31'25"
C4	600.00'	210.00'	208.93'	S37°41'53"W	20°03'12"
C5	600.00'	115.21'	115.03'	S42°13'26"W	11°58'06"
C6	600.00'	94.79'	94.69'	S32°11'50"W	9°03'06"

BEARING BASIS:
 TEXAS STATE PLANE COORDINATE SYSTEM, CENTRAL ZONE, NAD 83/HARN

- LEGEND
- 1/2 INCH IRON ROD WITH PLASTIC "DELTA SURVEY" CAP FOUND
 - ⊙ 1/2 INCH IRON ROD WITH PLASTIC "DELTA SURVEY" CAP SET
 - ⊙ 1/2 INCH IRON ROD WITH "STAUDT" CAP FOUND
 - 1/2 INCH IRON ROD FOUND
 - TXDOT TYPE I MONUMENT FOUND
 - ▲ NAIL FOUND
 - CONCRETE MONUMENT SET
 - L.S.E. LATERAL SUPPORT EASEMENT
 - D.E. DRAINAGE EASEMENT
 - O.P.R.T.C.T.X. OFFICIAL PUBLIC RECORDS, TRAVIS COUNTY, TEXAS
 - P.R.T.C.T.X. PLAT RECORDS, TRAVIS COUNTY, TEXAS

Delta Survey Group Inc.

8213 Brodie Lane Ste. 102 Austin, TX. 78745
 office: (512) 282-5200 fax: (512) 282-5230

REPLAT OF
 LOTS 15, 16, 17, 18 AND 19, BLOCK DDD
 OF
 MONTEBELLA SUBDIVISION

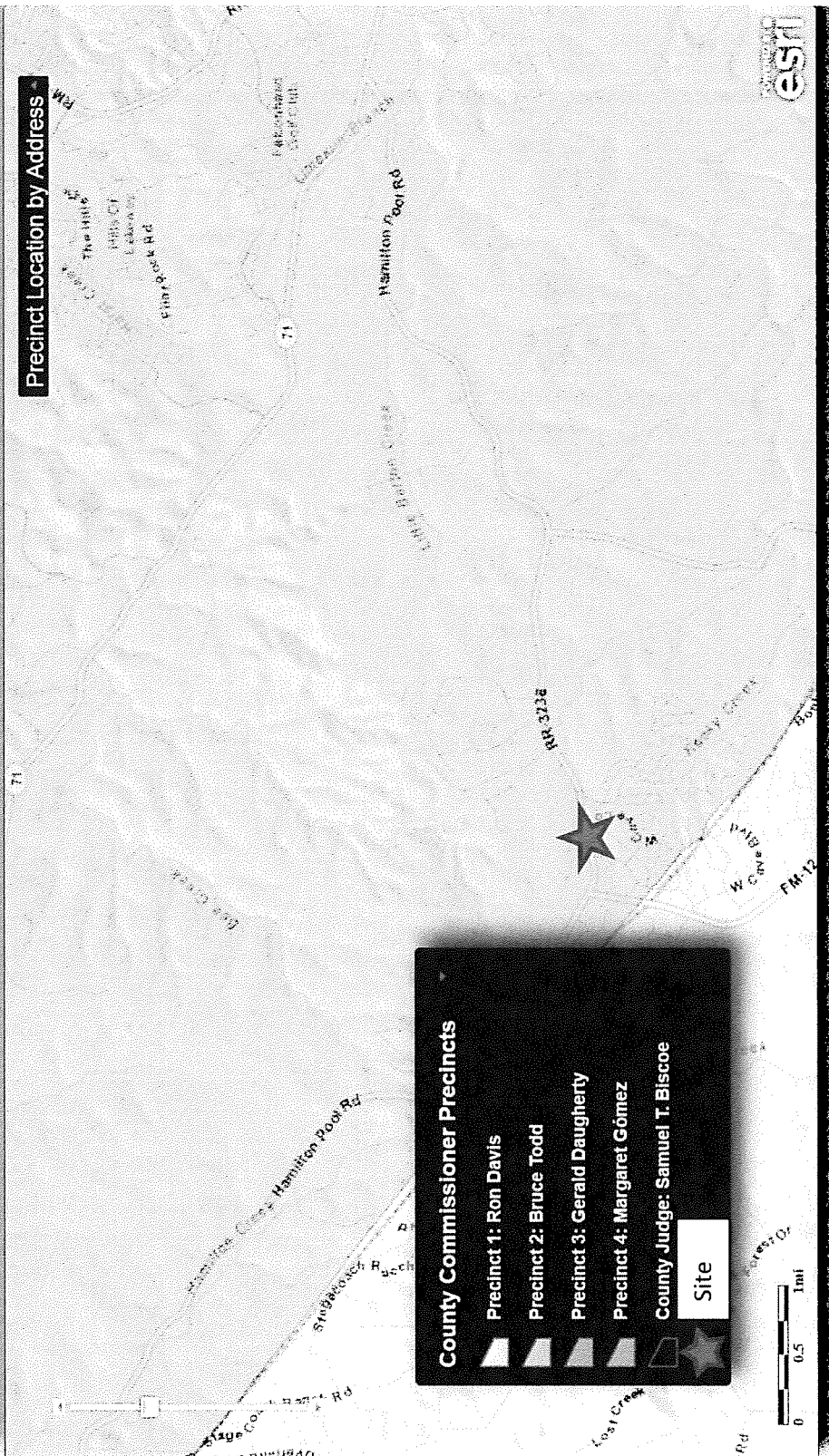
SHEET
 4
 OF
 4

Montebella Section 2 Precinct Map

TRAVIS
COUNTY
TX GOV

Travis County Commissioner Precincts

Precinct Location by Address



County Commissioner Precincts

- Precinct 1: Ron Davis
- Precinct 2: Bruce Todd
- Precinct 3: Gerald Daugherty
- Precinct 4: Margaret Gómez
- County Judge: Samuel T. Biscoe
- Site