



Travis County Commissioners Court Agenda Request

Meeting Date: November 27, 2012

Prepared By/Phone Number: David A. Salazar 854-4107

Elected/Appointed Official/Dept. Head: Sherri E. Fleming,
County Executive for Health and Human Services and Veterans Service

Commissioners Court Sponsor: Judge Samuel T. Biscoe

AGENDA LANGUAGE:

Receive Update on Children's Optimal Health and Take Appropriate Action.

BACKGROUND/SUMMARY OF REQUEST AND ATTACHMENTS:

Since the inception of Children's Optimal Health, the Travis County has partnered with other local government entities and community-based organizations in coordinating efforts to reach the goal of improved access to and delivery of health resources and social services to eligible residents of Travis County.

STAFF RECOMMENDATIONS:

Staff seeks direction from the Court in continuing to support the efforts of Children's Optimal Health and its partner agencies as doing so would help in streamlining the County's community investments in the areas of social services and public health.

ISSUES AND OPPORTUNITIES:

Children's Optimal Health enables the community to visualize the health of its neighborhoods, identify assets and needs, unearth and nurture opportunities for collaborative change, as well as monitor outcomes over time through GIS mapping and related analysis applied to public and privately held datasets.

The work accomplished by the Children's Optimal Health allows its partners to improve operations, create relevant policy, identify areas for research, and mobilize the community regarding important issues of children's health,

AGENDA REQUEST DEADLINE: All agenda requests and supporting materials must be submitted as a pdf to the County Judge's office, agenda@co.travis.tx.us by **Tuesdays at 5:00 p.m.** for the next week's meeting.

including childhood obesity, behavioral and mental health, housing and homelessness, early education and afterschool care.

FISCAL IMPACT AND SOURCE OF FUNDING:

There is currently no fiscal impact regarding this agenda item.

REQUIRED AUTHORIZATIONS:

Mary Etta Gerhardt, Assistant County Attorney

AGENDA REQUEST DEADLINE: All agenda requests and supporting materials must be submitted as a pdf to the County Judge's office, agenda@co.travis.tx.us by **Tuesdays at 5:00 p.m.** for the next week's meeting.

Maps speak a universal language and offer a valuable communication tool. The methods used by Children's Optimal Health (COH) have taken this tool to a new and exciting level of specificity that enhances the ability for health and service providers to more effectively target limited funds.

In early 2008, thirteen lead community agencies and institutions in Austin, TX came together as Charter Members of Children's Optimal Health (COH). Five of the organizations committed initial funding, while others committed data, time, and their knowledge surrounding the health of Central Texas children/youth. These Board members reflect the diverse organizations that impact outcomes for children including healthcare, housing, education, economic development, and social/emotional development; thus, enhancing our ability to look at a broader definition of health. Further, this collaborative approach allows us to take a closer look at the social determinants and disparities in access to healthcare and social services creating significant barriers to the health and well-being of children and youth. The purpose of these efforts is to:

- Improve operations
- Impact policy
- Encourage research
- Mobilize the community

COH maps proprietary, de-identified, legally compliant data acquired through Data Sharing Agreements with over 14 Austin area education & health entities. For the Obesity Project, the first maps reflected the health status of Austin Independent School District (AISD) middle school students by neighborhoods of residence based on BMI and cardiovascular health measures. The ability to use individual residence data allows COH to create neighborhood level maps and enables the identification of "hot spots" as opposed to the diffused image that results from somewhat limited data provided by zip code and other public data. Once concentrations, also known as "hot spots," are identified, it is possible to create drill-down maps that take a closer look at contributing factors. Community asset data (such as food, schools, parks, healthcare, and transportation), demographic data (such as socio-economic status and race/ethnicity), and other community characteristic data (such as crime rates) can be overlaid giving a fuller picture of both positive and negative contributing factors. All maps are approved by an expert Technical Advisory Committee (TAC) made up of physicians, school officials, direct service providers, researchers and academics, and the data owners.

Once projects are completed, a community summit is held to present the information to the community and engage action partners in the planning process for prevention and intervention for the neighborhoods of need. Summits bring experts, parents, educators, health and social service providers, neighborhood advocacy groups, and others together to find solutions through policy and environmental changes. Nine have been held with two more in the planning stages.

COH is unique. Our organization:

- Is a trusted data holder (for appropriate use and for HIPAA and FERPA compliance), COH, through Data Sharing Agreements (DSAs), and knows how to protect data from misuse.
- Has developed effective processes to analyze and display complex spatial data.
- By combining data from multiple sources and sectors, can leverage data for our community's benefit in ways no single member organization can. The insights gathered by analyzing data from multiple sources can also help individual organizations improve their effectiveness in the delivery of services that significantly improve the health outlook for children and youth.

Other projects include Behavioral Health, Transportation Related Child Injury, Young Children by Physical and Social Environment, and Hays Consolidated ISD Obesity among others. COH has now gained access to data to further allow expansion projects to other school districts, as well as an asthma project and is anticipating dental and prenatal outcome projects while expanding on the behavioral health, child injury, and obesity mapping.

The maps provide a data driven picture easily understood by all. They have been utilized to stimulate targeted action, to support service providers with information to attract funding, and with time- series mapping, to evaluate interventions once they occur.

GIS mapping has become a popular and useful technique in looking singularly at an area of need. However, the level of data used and usefulness of the resulting images are critical to providing a level of understanding that is not generally available. Our collaboration results in breadth, depth, and quality that is cross-cutting across contributors to health and well-being, as well as across service providers.

COH is proud to have an active collaboration of community partners that are joined in making informed decisions that result in improvements in child health.

Contact:

Maureen Britton
President/Executive Director
1206 West 38th Street, Suite 4220
Austin, TX 78705
(512) 324-5981
mbritton@childrensoptimalhealth.org
www.childrensoptimalhealth.org

COH Board Membership

- *Robert I. Bonar, Jr., DHA, *Board Chair*
Seton Family of Hospitals, *President/CEO*
Dell Children's Medical Center, *CEO*
rbonar@seton.org
- *William Sage, MD, JD, *Board Vice-Chair*
University of Texas at Austin, *Vice Provost for Health Affairs*
wsage@law.utexas.edu
- Susan Dawson, *Board Community Vice-Chair*
E3 Alliance, *Executive Director*
sdawson@e3alliance.org
- Ellen Balthazar, *Board Secretary*
Early Childhood, *At Large - Community Representative*
ellenpbalthazar@gmail.com
- *Pete Perialas, *Treasurer*
Lone Star Circle of Care, *President and CEO*
pperialas@lscctx.org
- *Bobbie Barker
St. David's Foundation, *Vice President – Grants and Community Programs*
bbarker@stdavidsfoundation.org
- *Trish Young, CPA
Central Health, *President and CEO*
Trish.Young@centralhealth.net
- Meria Carstarphen, PhD
Austin Independent School District, *Superintendent*
superintendent@austinisd.org
- *Carlos Rivera
City of Austin, *Director, Health & Human Services*
Carlos.Rivera@austintexas.gov
- Veronica Macon, *Vice President of Community Development District II*
Housing Authority of the City of Austin
veronicam@hacanet.org
- Susan McDowell
Lifeworks, *Executive Director*
Susan.McDowell@lifeworksaustin.org

*Jeff Thomas

HEB Grocery Company, *Senior Vice President and General Manager/Central Texas*

thomas.jeff@heb.com

Suki Steinhauser, Executive Director

Communities in Schools of Central Texas

ssteinhauser@ciscentraltexas.org

*Sustaining Members

Non-member Consultants

Stephen Pont, Dell Children's Medical Center

Travis County, Sherri Fleming

Seton Healthcare Family, Ashton Cumberbatch

Greater Austin Chamber of Commerce, Drew Scheberle

University of Texas/ School of Public Health, Steve Kelder

COMPLETED PROJECJTS

(Short Summary)

Young Children Volume II – United Way Capital Area Success by 6 Partnership

Project Partner(s): United Way Capital Area Success by 6, UCLA Center for Healthier Children, Families and Communities.

Question/Topic: Are there neighborhoods where very young children are identified with developmental vulnerabilities?

Summit: Presented at United Way Capital Area Success by 6 Data Dive and Summit

Online: Yes

Central Texas Afterschool Network, Partners in Improving Child Well-being

Project Partner(s): Central Texas Afterschool Network and Safe Schools/Healthy Students – Austin Community Collaboration to Enhance Student Success (ACCESS)

Question/Topic: Where are the afterschool resources for children in 17 targeted Central Texas Zip Codes?

Summit: Presented at CTAN Breakfast of Champion's October 2011

Online: Yes

Child and Youth Behavioral Health, 2009-2010

Project Partner(s): Safe Schools/Healthy Students – Austin Community Collaboration to Enhance Student Success (ACCESS) and AISD

Question/Topic: What is the behavioral health status of children and youth in the Austin area?

Reports: School and Community Safety, Student Disciplinary Actions, Student Substance Use, and Clinical and Community Supports

Summit: May 2011

Online: Yes

Continuation: Originating at the Summit, community stakeholders have formed a Child and Youth Behavioral Health Clinical Advisory Group.

Transportation Related Child Injury, 2007-2009

Project Partner: Dell Children's Medical Center

Question/Topic(s): Motor Vehicle Crashes Involving Children, Child Passenger Safety: Restraint Use and Resources, and Child Pedestrian and Cyclist Injuries

Summit: February, 2012

Online: Yes

Child Obesity by Neighborhood, 2007-2010

Project Partners: Austin Independent School District; Hays Consolidated Independent School District; Manor Independent School District

Question/Topic: Where are the ISD students (Elementary, Middle and High School) who are at risk for obesity and related health problems?

Summits: Dove Springs Neighborhood March 2011 and February 2009 Community Wide May 2012 Hays CISD

Online: Child Obesity by Neighborhoods and Middle School s- 2009, 2010, and 2011, Hays CISD -2011

Continuation: COH is pursuing data sharing agreements (DSAs) will surrounding ISDs and a funding source to create a picture of Child Obesity in Central Texas.

Update: DSAs have been signed with Pflugerville ISD and Del Valle ISD.

Housing Authority of the City of Austin, 2009-2010 Academic Success, Absenteeism, and Fitness

Survey of AISD students per HACA Facility

Project Partner(s): City of Austin Housing Authority

Question/Topics: How do students living in HACA facilities compare to their peers (other AISD students) on academic performance, absenteeism, and fitness?

Online: Yes, Aggregate Report

Young Children, by Physical and Social Environment, 2007-2008

Project Partner: Safe Schools/Healthy Students – Austin Community Collaboration to Enhance Student Success (ACCESS)

Question/Topic: What does the physical and social environment look like for Austin's youngest children and their families?

Summit: September 2010

Online: Yes

Continuation: United Way has funded an extension of this project in partnership with UCLA to further investigate the environment for young children in Manor ISD and Quail Creek/St. Johns Neighborhood and incorporate data on WIC Clinic locations and services.

Access to Healthcare, 2008

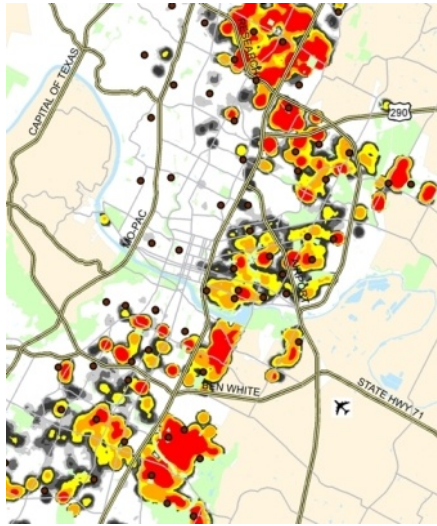
Identification of Central Health's target population (un/under-insured)

Behavioral Health, 2012

What is the co-morbidity for mental illness and substance abuse and the geographic distribution?

Project Partner: Central Health

Online: No



Maureen Britton, Executive Director

Susan Millea, Ph.D. Community GIS Facilitator

CHILDREN'S OPTIMAL HEALTH

MISSION

COH enables communities to visualize the health of their neighborhoods, identify assets and needs, unearth and nurture opportunities for collaborative change and monitor outcomes over time through GIS mapping and related analysis applied to public and privately held data sets.

- Improve Operations
- Inform Policy
- Encourage Research
- Mobilize the Community

COH Board and Consultants

Board Members

- **Seton Healthcare Family***
- **St. David's Foundation***
- **Lone Star Circle of Care***
- **Central Health***
- **Austin ISD***
- **University of Texas at Austin***
- **H-E-B***
- **City of Austin***
- Housing Authority of the City of Austin
- Communities in Schools
- E3 Alliance
- Lifeworks
- Early Childhood Representative

Consultants (non-voting)

- UT School Public Health at Austin
- Greater Austin Chamber of Commerce
- Travis County

*Denotes ongoing financial support.

Travis County

History of Involvement

- Formative Stages
- Business Formation
- TUUNA (Texas Uniform Unincorporated Nonprofit Association)
- Current consultants

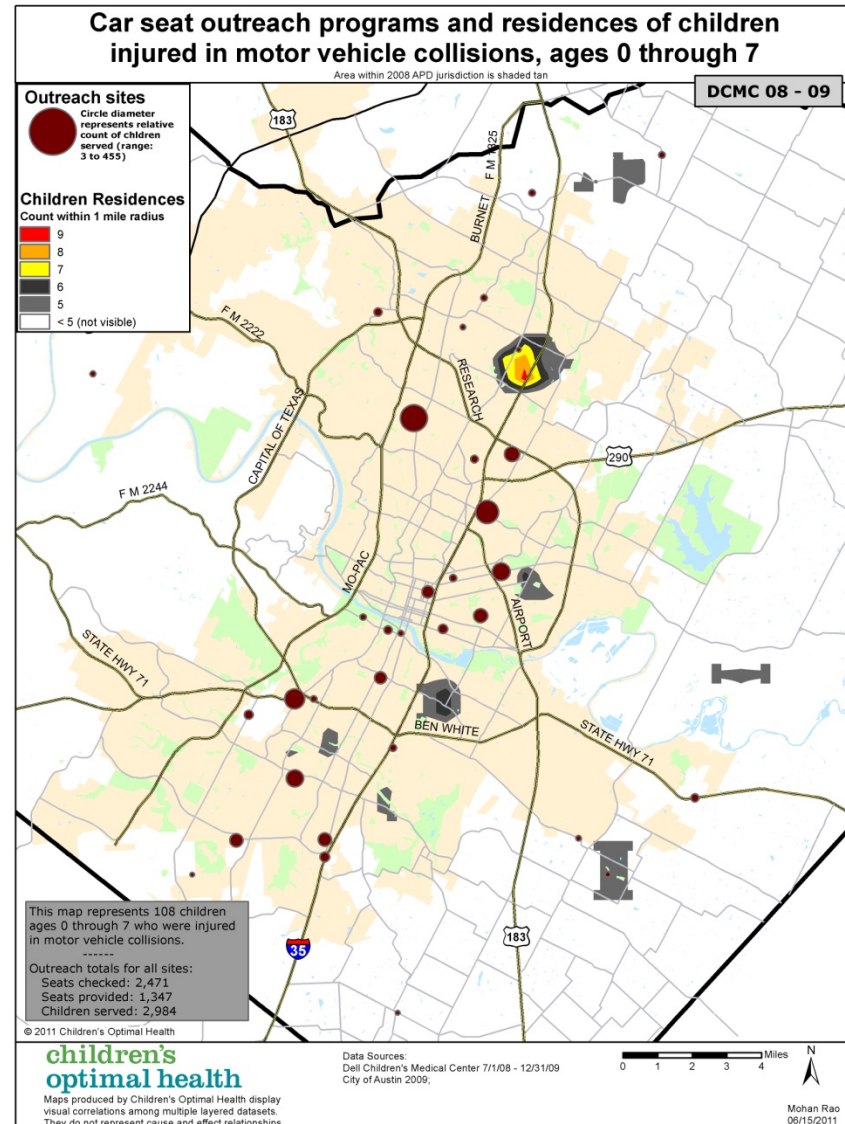
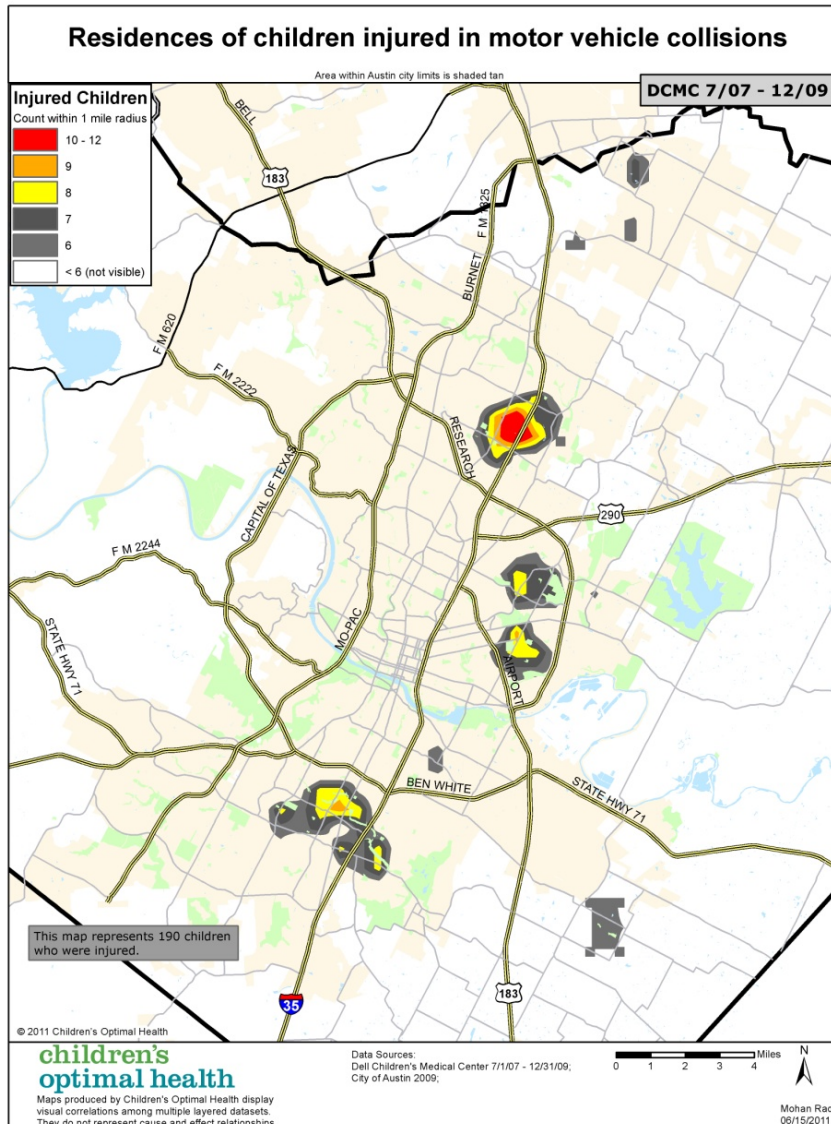
Projects

- Child Obesity, Central Texas School Districts, 2007-2012
- Student Mobility, 2012
- Child/Youth Behavioral Health, 2011
 - Safety, Mental Health, Substance Use
- Housing, 2010
- Child Injury-Transportation Related, 2011
- Young Children/Early Care and Education, 2010-2011
- Out of School Time Programming, 2011

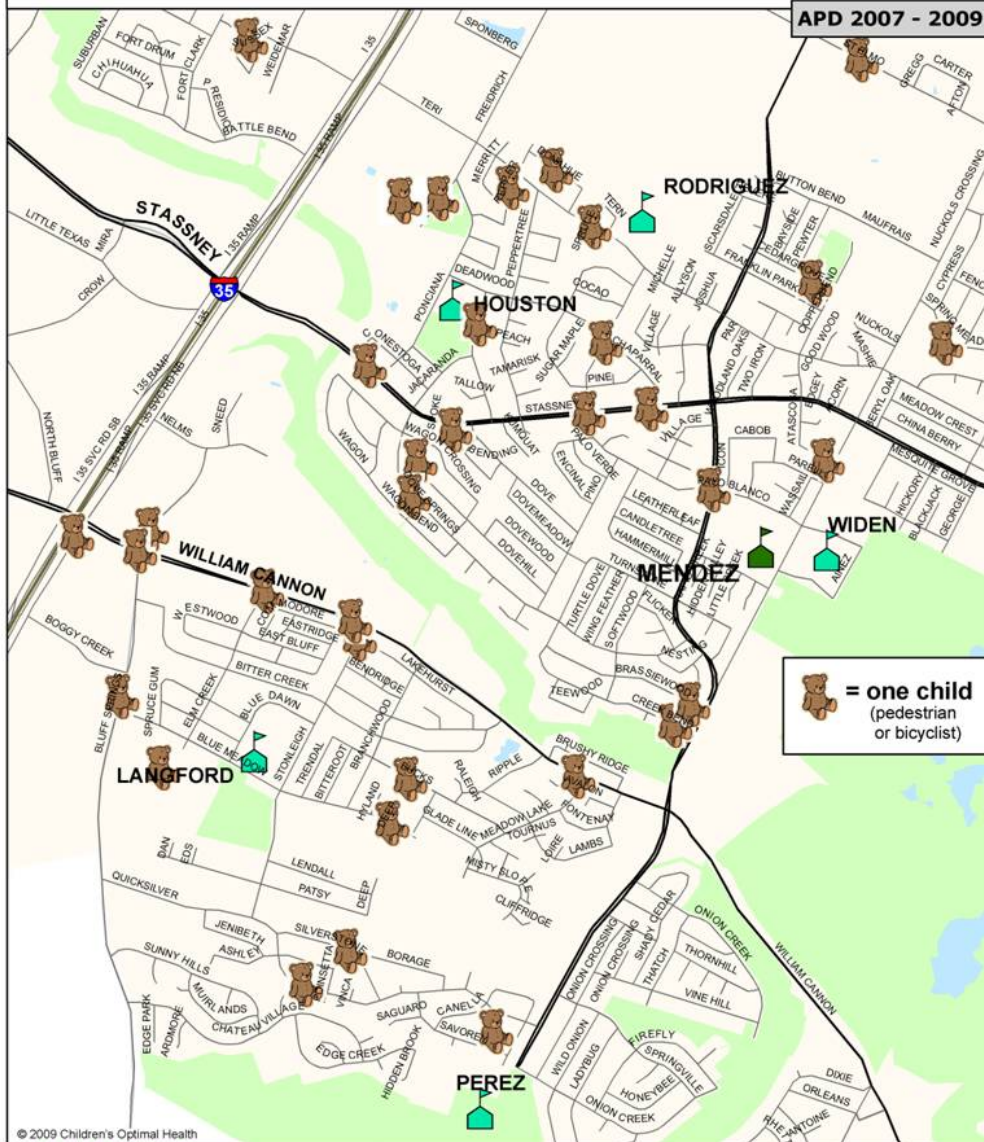
Transportation Related Child Injury

- Multiple datasets enhance our understanding and improve prevention planning
 - Data from Dell Children’s Medical Center and Austin Police Department
- City of Austin Resolution
- Children’s Optimal Health Workgroup
 - Subcommittees on public policy, education, engineering, enforcement, and data sharing

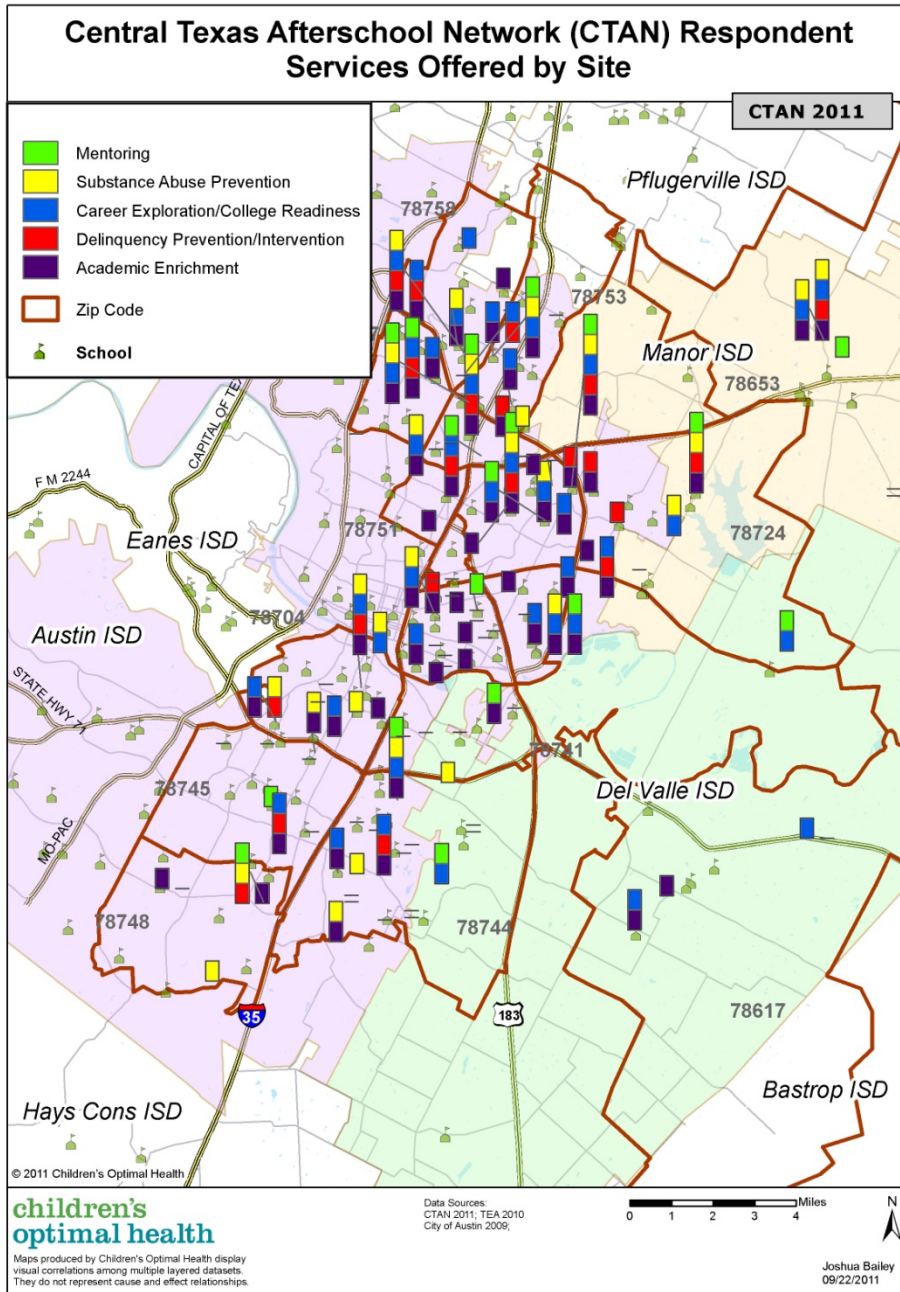
Transportation Related Child Injury



Locations of Motor Vehicle Collisions involving pedestrians or bicyclists age 17 or younger. - Dove Springs -



Using Maps for Local Action



Out of School Time Services

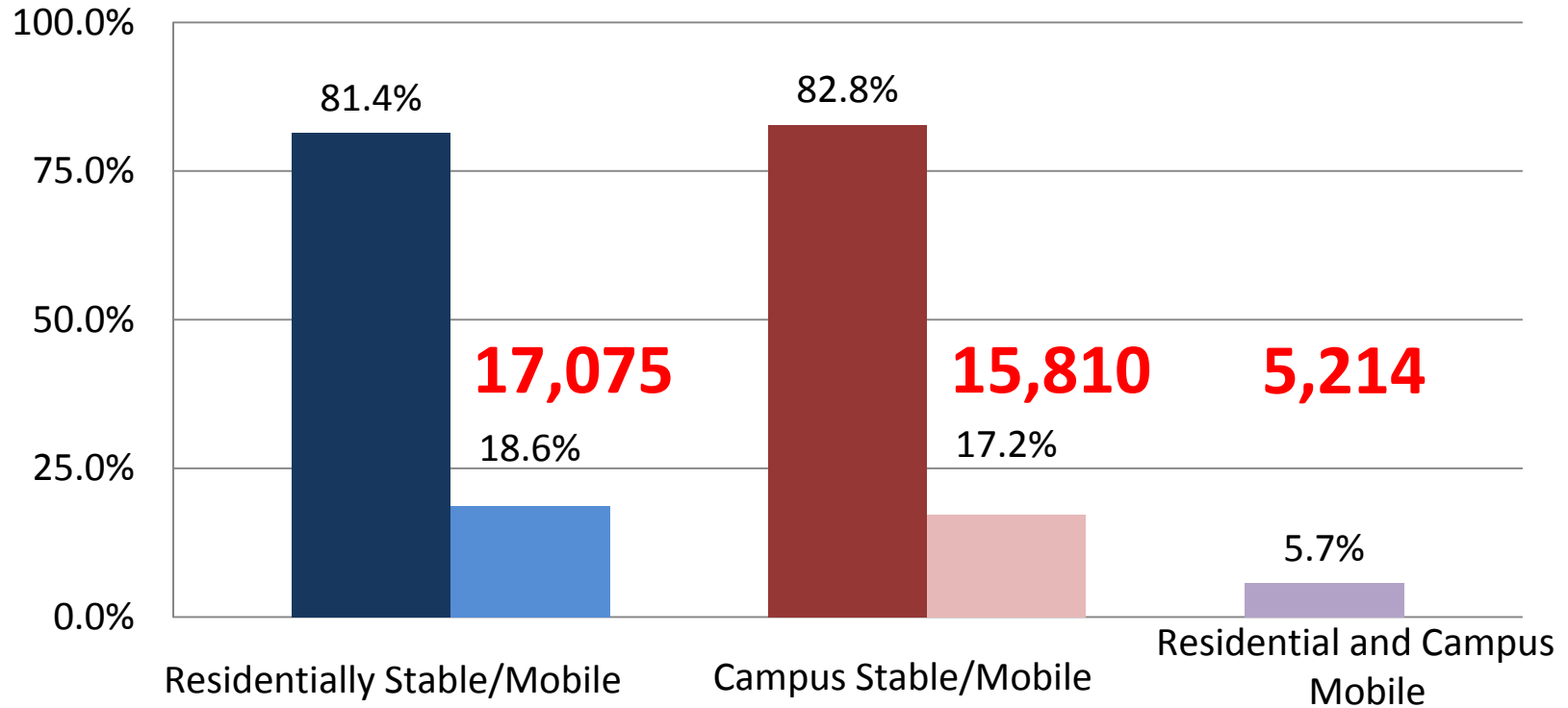
- Multiple school districts within Travis County
- Combine with maps depicting youth indicators (i.e., obesity, academic success) to target need.

Student Mobility

- Joint Subcommittees
 - City of Austin, Travis County, and AISD
- Children's Optimal Health and
- AISD Department of Research and Evaluation
 - Funded through the ACCESS grant

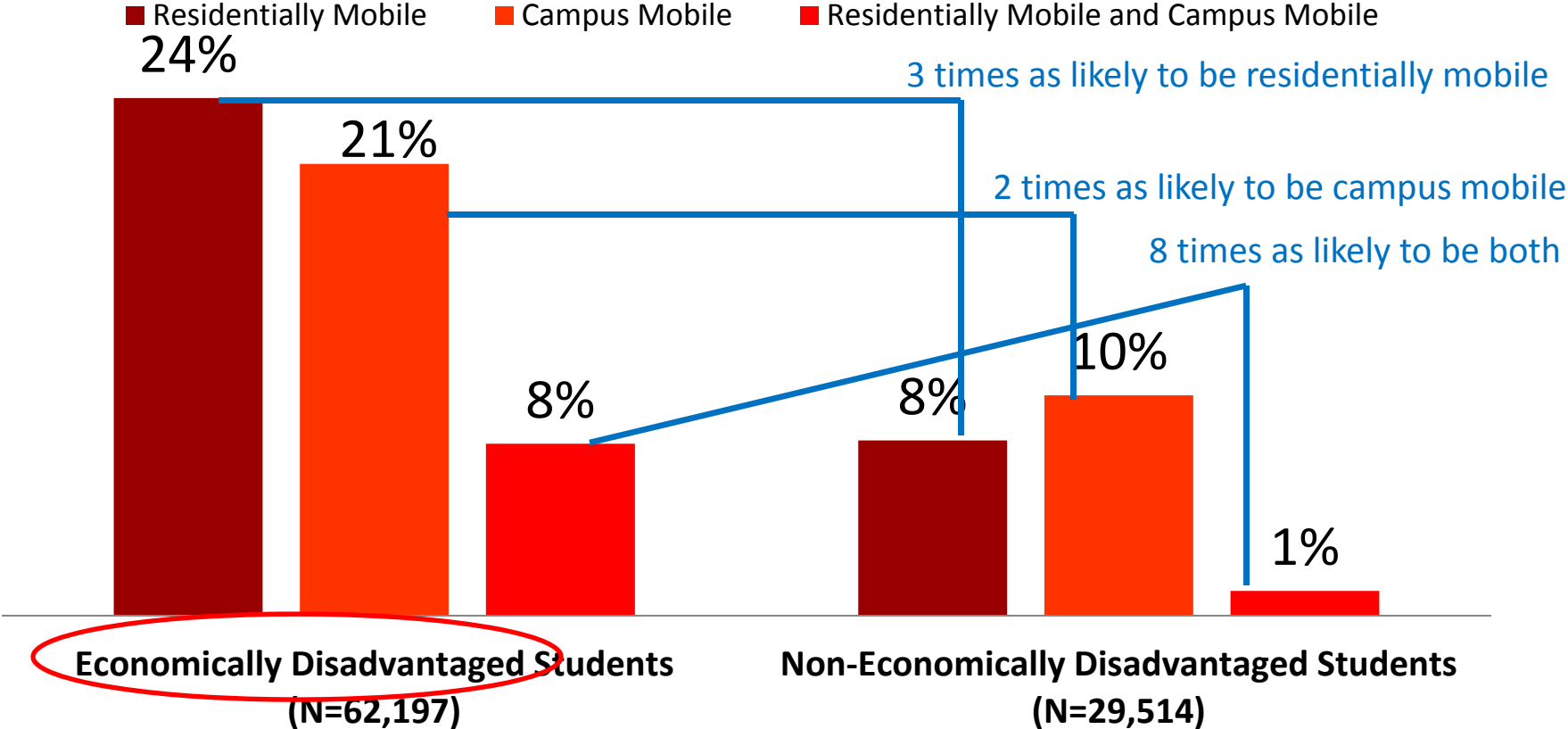
How many students are mobile during the school year? **27,671**

Proportion of AISD Students by Type **30.2%**
School Year 2010-11, N= 91,693



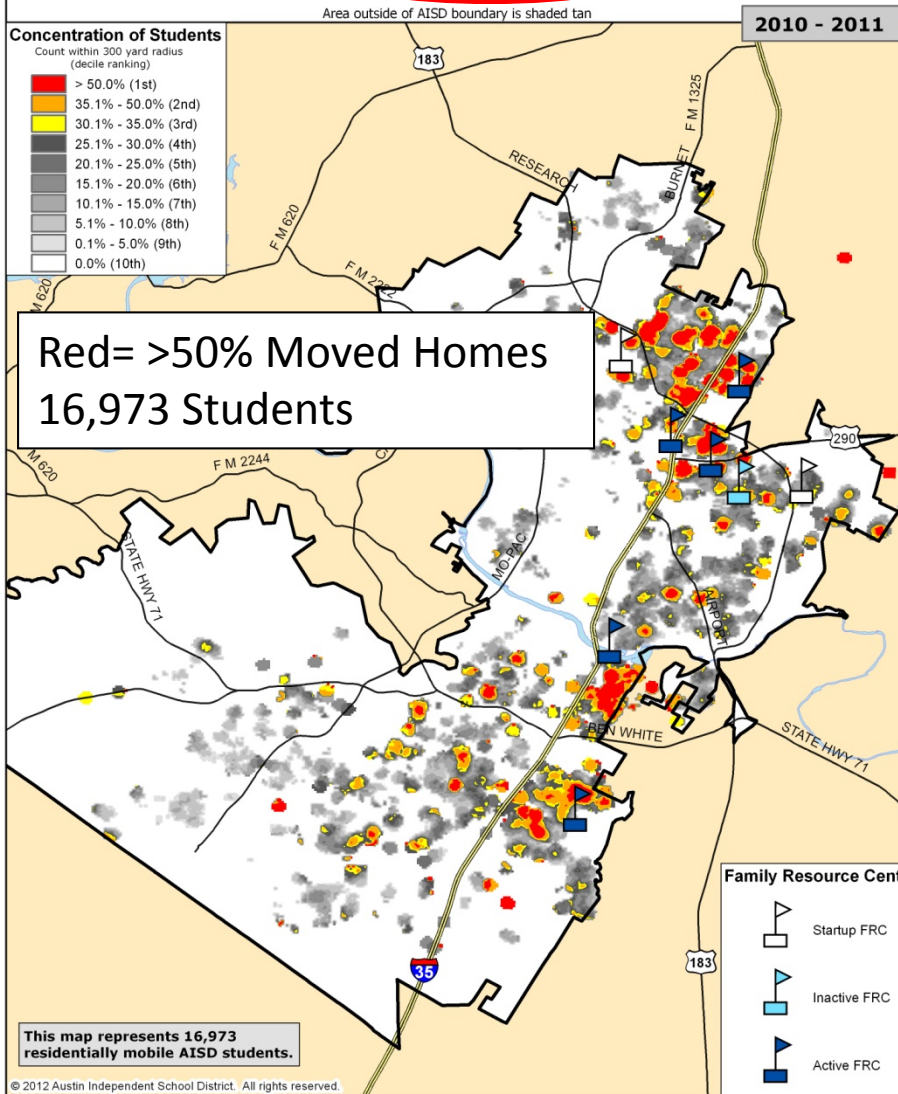
Economic Disadvantage and Mobility

Mobility Status by Economic Disadvantage Status

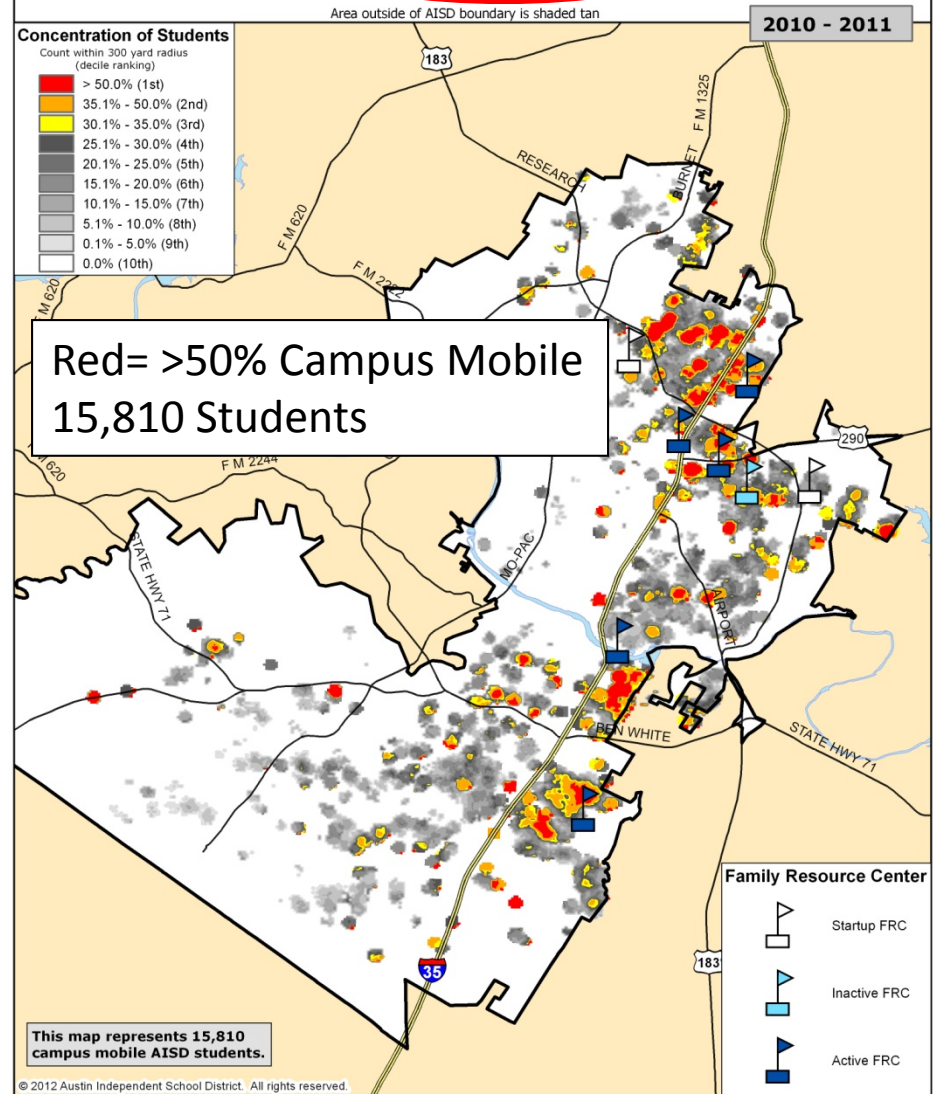


2/3 of AISD Students are Economically Disadvantaged

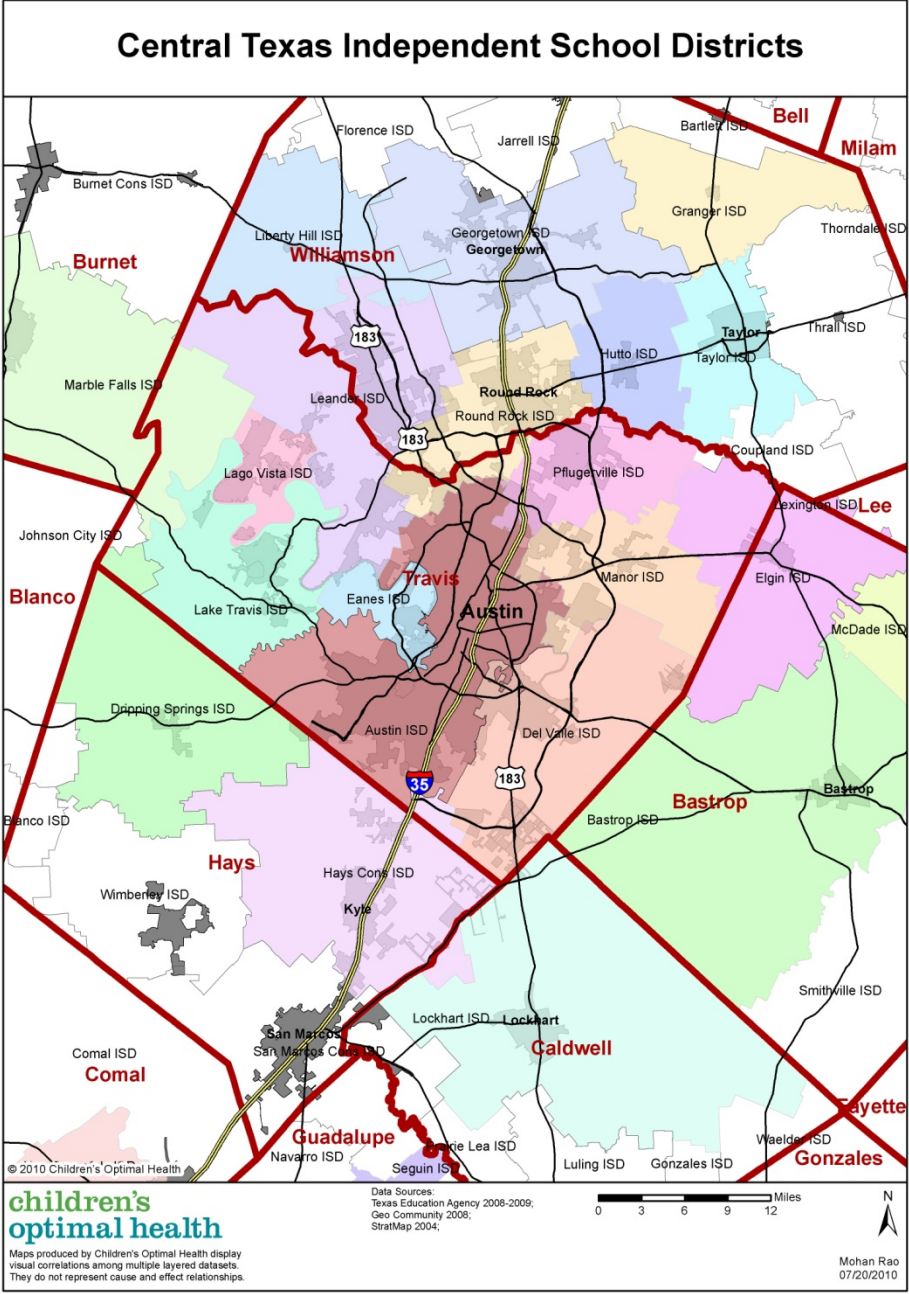
Proportion of Residentially Mobile Students



Proportion of Campus Mobile Students



Central Texas School District Mapping



Use of COH's Work

- Joint Subcommittees (COA, Travis County, AISD)
- Austin, Del Valle, Manor, and Hays Consolidated ISDs
- City of Austin
- Travis County-Child and Family Services
- Success by Six
- Central Health Strategic Planning
- HACA
- Multiple Direct Service Providers and Funders

Thank You for Your Time
Questions?

