



Travis County Commissioners Court Agenda Request

Meeting Date: May 1, 2012

Prepared By/Phone Number: Kimberly Pierce, CJP Planning Manager
4-4764

Elected/Appointed Official/Dept. Head: Roger Jefferies, County
Executive Justice and Public Safety

Commissioners Court Sponsor: Commissioner Margaret Gomez

AGENDA LANGUAGE: Receive update and presentation from Council on At Risk Youth (CARY) on its FY11 accomplishments.

BACKGROUND/SUMMARY OF REQUEST AND ATTACHMENTS:
CARY staff will present an overview of their accomplishments in FY2011.

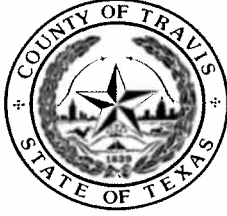
STAFF RECOMMENDATIONS: n/a

ISSUES AND OPPORTUNITIES: n/a

FISCAL IMPACT AND SOURCE OF FUNDING: n/a

REQUIRED AUTHORIZATIONS: n/a

AGENDA REQUEST DEADLINE: All agenda requests and supporting materials must be submitted as a pdf to Cheryl Aker in the County Judge's office, Cheryl.Aker@co.travis.tx.us by Tuesdays at 5:00 p.m. for the next week's meeting.




CRIMINAL JUSTICE PLANNING

Roger W. Jefferies, County Executive, Justice & Public Safety
P.O. Box 1748 Austin, Texas 78767 Phone (512) 854-4415 Fax (512) 854-4417

To: Travis County Commissioners Court

Through: Roger Jefferies, Executive Manager, Justice and Public Safety

From: Kimberly Pierce, Planning Manager, Criminal Justice Planning 

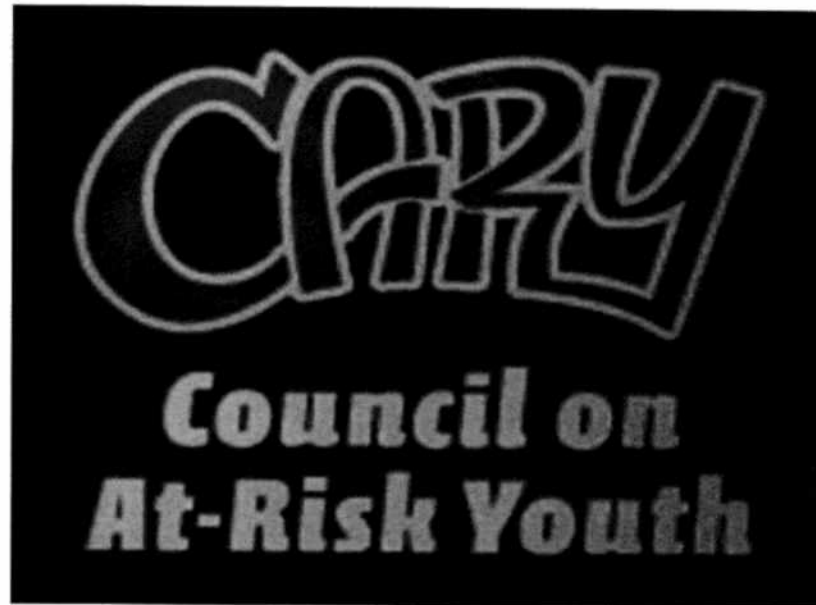
Date: April 24, 2012

Subject: Receive update and presentation for Council on At Risk Youth (CARY) on its FY11 accomplishments

CARY requests that they make a presentation on completed pertaining to CARY's accomplishments in FY11 and upcoming FY13 events. Back-up materials are attached to this memorandum.

Attachment: CARY Power Point

cc: Cynthia Finnegan, CJP Senior Planner



Adrian Moore

Executive Director

Shana Fox

Latoya Harmason

Wes Vincik

Carlos Sanchez

Youth Advisors

TODAY'S CARY PRESENTATION

Overview - Adrian Moore

Aggression Replacement Training - Shana Fox

Individual Counseling- Latoya Harmason

Behavioral Coaching Mentors- Wes Vincik

Outcome Measures- Carlos Sanchez

Student Responses- CARY students

ABOUT CARY

- **Mission:** Helping youth promote safe schools and safe community, works to close the school-to-prison pipeline
- **Locations:** *PeaceRox* in the ALC, Bedichek, Burnett, Dobie, Garcia, Pearce, Webb Middle Schools; *Behavioral Coaching Mentorship* at Reagan, Lanier, LBJ High Schools
- **Target Youth:** 600 youth annually in middle school disciplinary system
- **Why This Group?:** Disciplinary acts are powerful predictors for future referrals to juvenile and criminal justice (“Breaking Schools’ Rules”)

TRAVIS COUNTY COMMUNITY PLAN

- **High Priority:** Travis County needs juvenile delinquency prevention and early intervention services for low-income and at-risk youth.
- **Goals:** Provide year-round programming.
- **Strategies/Tasks:** Identify and secure funding to support the implementation of established and new evidence-based prevention and early intervention services for identified youth.
- **Implementation:** Build organizational capacity (staffing, governance, and financial stability) and secure alternate sources of funding and in-kind donations to support local prevention and early intervention needs.

PREVENTION AND INTERVENTION QUOTES

“Early Intervention is critical to children and youth’s behaviors escalating beyond the parent’s control and the public school disciplinary system’s control and subsequently ends up with the police being notified and the youth is taken to the juvenile justice agency.” - United Nations, Social.un.org/Youth Year/docs., 2011

“Resources should be invested in prevention or early intervention programs to reduce involvement of minorities in school delinquency, enhance academic performance, support economically disadvantaged families, and develop effective interventions for juveniles with emotional or learning disabilities.”

- Texas A&M University Public Policy Research Institute

“There is need to build an infrastructure for effectively preventing delinquent offenses. The prevention infrastructure should include involvement in a local prevention board with participation by the City of Austin, Travis County, Austin ISD school board and Austin/Travis County Health Department.” - Council on At-Risk Youth

BUDGET REQUEST

- Council on At-Risk Youth – Delinquency and Youth Violence Prevention Program
- Amount: \$285,900.00
- Travis County support is requested for Fy13:
 - *Three Youth Advisors*, the PeaceRox Program at three middle school sites for *225 youth*, and
 - *One Mentor Youth Advisor*, supervise mentors for *100 middle school youth* transitioning to three high school sites

PeaceR☺X

~~AGGRESSION REPLACEMENT TRAINING~~

Skillstreaming

The Behavioral Component

Empathetic Reasoning

The Values Component

Anger Control Training

The Emotional Component

A.R.T. LESSONS

- Listening lesson
- Intro to the anger pyramid
- Intro to social skills
- Kohlberg's Stages of Moral Development
- Defining empathy
- The ABC's of Conflict
- Following directions
- Intro to 15 Character Traits
- Someone I admire
- Anger management cycle
- How to introduce yourself
- Goal-setting & self-esteem
- Empathizing – In ten years
- Recognizing anger triggers
- Negotiating skills
- Responsibility
- The Trust Account
- Recognizing anger cues
- Self-control
- Perseverance
- Standing up for your rights
- Responding to teasing
- Making a complaint
- Dealing with an accusation
- Dealing with group pressure
- Keeping out of fights
- Avoiding trouble with others
- Dealing with someone else's anger

INDIVIDUAL COUNSELING

Coaching/Mentoring

Grades

Attendance

Behavioral Goal Setting

Parent Contacts

Discipline

CARY Mentor Program

- **CARY Behavioral Coaching and Mentoring Program began in October of 2010 as a result of grant funding through the Criminal Justice Division of the Governor's Office.**
- **Purpose is to match freshmen at three AISD high schools (Lanier, LBJ and Reagan) with upper level college students.**
- **Mentees must meet have at least one disciplinary incident involving fighting or aggressive behavior.**
- **Mentors are screened, interviewed and must pass a criminal background check.**
- **They receive on-going training and support throughout their participation in the program.**
- **Each Mentor is assigned up to 3 Mentees and develops a positive, supportive relationship with these students through weekly meetings.**

MENTORSHIP PROGRAM

About the mentees

- 9th grade students
- Enrolled at Reagan, LBJ, and Lanier High Schools or the Alternative Learning Center
- One or more aggressive discipline incidents

About the mentors

- Local university students
- Interviewed, background checks
- Initial and ongoing monthly trainings

Our annual goal is to match 33 mentors with 100 mentees

MENTORSHIP PROGRAM EVALUATION

1st year evaluation

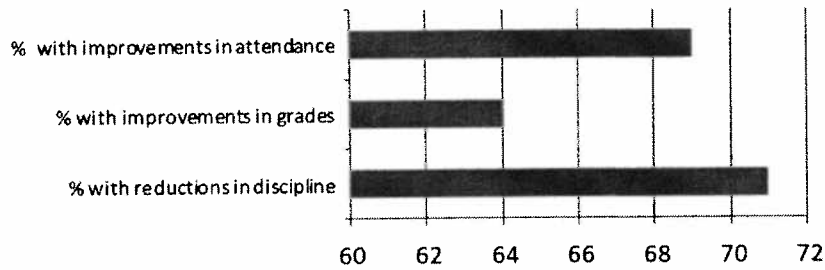
Only 12 out of 83 students had another aggressive discipline incident after being matched with a mentor

6-month evaluation (this year)

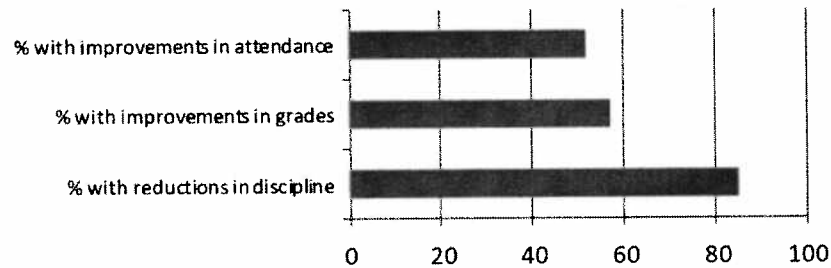
Only 8 out of 46 students had another aggressive discipline incident after being matched with a mentor

OUTCOME MEASURES

Students who completed 1st Semester: Jan 2012



Students who completed 2nd Semester: Jan 2012



Students who completed Post-CARY 6 months: Jan 2012

