



## Travis County Commissioners Court Agenda Request

**Meeting Date:** January 10, 2012

**Prepared By/Phone Number:** Andrea Colunga Bussey 854-4102

**Elected/Appointed Official/Dept. Head:** Sherri E. Fleming,  
County Executive for Health and Human Services and Veterans Service

**Commissioners Court Sponsor:** Judge Samuel T. Biscoe

### **AGENDA LANGUAGE:**

Consider and Take Appropriate Action on the Request for Interest in Community Demonstration for System of Care Expansion - Achieving Successful Systems Enriching Texas (ASSET) from the Texas Health and Human Services Commission.

### **BACKGROUND/SUMMARY OF REQUEST AND ATTACHMENTS:**

Since the Court first approved acceptance of the grant and implementation of the System of Care Model for Travis County in 1998, the programs have provided an array of services throughout the Travis County communities by partnering and sharing the tenets of the System of Care model for service delivery. All partners are trained on this philosophy and Travis County has been a leader of this endeavor. The model is promising practice which has proven to be effective in addressing the complex needs and opportunities that our families face. This is an excellent opportunity to continue to have a lead role in shaping the model on a statewide level. Travis County's System of Care programs under the Office of Children's Services has received National recognition and has been invited to present at National conferences such as the National Conference on Substance Abuse, Child Welfare, and the Courts (September 2011) and the National Conference on the Prevention of Child Abuse (April 2012).

### **STAFF RECOMMENDATIONS:**

Staff recommends that the Court indicate its approval for participation in the proposed opportunity that would be consistent with the Court's commitment to the Travis County System of Care Service Delivery philosophy and

AGENDA REQUEST DEADLINE: All agenda requests and supporting materials must be submitted as a pdf to Cheryl Aker in the County Judge's office, [Cheryl.Aker@co.travis.tx.us](mailto:Cheryl.Aker@co.travis.tx.us) by **Tuesdays at 5:00 p.m.** for the next week's meeting.

authorize the County Judge to sign the Request for Interest document included in the packet.

**ISSUES AND OPPORTUNITIES:**

Please see attached memo.

**FISCAL IMPACT AND SOURCE OF FUNDING:**

Approving this request will not increase the County Budget.

**REQUIRED AUTHORIZATIONS:**

Mary Etta Gerhardt

AGENDA REQUEST DEADLINE: All agenda requests and supporting materials must be submitted as a pdf to Cheryl Aker in the County Judge's office, [Cheryl.Aker@co.travis.tx.us](mailto:Cheryl.Aker@co.travis.tx.us) by **Tuesdays at 5:00 p.m.** for the next week's meeting.



**TRAVIS COUNTY HEALTH and HUMAN SERVICES  
And VETERANS SERVICE  
502 E. Highland Mall Blvd  
P. O. Box 1748  
Austin, Texas 78767**

**Sherri E. Fleming  
County Executive  
(512) 854-4100  
Fax (512) 854-4115**

**DATE:** January 4, 2012

**TO:** Members of the Travis County Commissioners Court

**FROM:** Andrea Colunga Bussey, Director, Office of Children's Services,  
Travis County Health and Human Services and Veterans Service

**THROUGH:** Sherri E. Fleming, County Executive  
Travis County Health and Human Services and Veterans Service

**SUBJECT:** **Cover Memorandum** for: Request for Information for Community  
Demonstration for System of Care Expansion-Achieving Successful  
Systems Enriching Texas (ASSET).

The attached packet contains a variety of letters of support from our partners in the Travis County System of Care community. We expect additional letters of support from other partners to be included in the near future. Specifically, we anticipate letters of support from Austin Independent School District, Manor Independent School District, Del Valle Independent School District, Travis County Juvenile Probation Department, Texas Department of Family and Protective Services, Communities in Schools, and community and family partners.

Your consideration of this request is most appreciated.

**cc:** Mary Etta Gerhardt, Assistant County Attorney  
Andrea Colunga-Bussey, Director, Office of Children's Services



**TRAVIS COUNTY HEALTH and HUMAN SERVICES  
And VETERANS SERVICE  
502 E. Highland Mall Blvd  
P. O. Box 1748  
Austin, Texas 78767**

**Sherri E. Fleming  
County Executive  
(512) 854-4100  
Fax (512) 854-4115**

**DATE:** January 4, 2012

**TO:** Members of the Travis County Commissioners Court

**FROM:** \_\_\_\_\_  
Sherri E. Fleming, County Executive  
Travis County Health and Human Services and Veterans Service

**SUBJECT:** Request for Information for Community Demonstration for System of Care Expansion-Achieving Successful Systems Enriching Texas (ASSET).

**Proposed Motion:**

Consider and Take Appropriate Action on the Request for Information for Community Demonstration for System of Care Expansion-Achieving Successful Systems Enriching Texas (ASSET).

**Summary and Staff Recommendations:**

Staff recommends approval of the request from the Office of Children's Services Division of Travis County Health and Human Services and Veterans Service to submit this Request for Information No.:529-12-0060 from the Texas Health and Human Services Commission. If approved, the RFI will be submitted for consideration.

**Budgetary and Fiscal Impacts:**

Approving this action will not increase Travis County's budget. The RFI does not include the receipt of any funding nor does it obligate funding from the County.

**Issues and Opportunities:**

The State of Texas, by and through the Texas Health and Human Services Commission (HHSC), requests that communities interested in demonstrating a System of Care service delivery approach for children with serious emotional disturbances respond with a proposal that may be used to inform the expansion of System of Care practices in

Texas. Authority to conduct this demonstration is through a federal grant project through the Center for Mental Health Services, Substance Abuse and Mental Health Services Administration (SAMHSA) grant opportunity #SM-11-008. The intent of this RFI is to receive and evaluate proposals from communities who are interested in launching a System of Care service delivery approach or communities interested in enhancing an existing System of Care service delivery system. Three communities will be selected to receive in-state and national technical assistance to demonstrate System of Care practices that may be used to develop an overall strategic plan for statewide expansion of System of Care.

It is the intent of HHSC, through this RFI, to gain the necessary knowledge and understanding to meet these stated objectives:

- Identify communities that have interest in various stages (beginning or early stages to advanced stages) of systems development for supporting a System of Care service delivery approach within their community (e.g., developing governance structures, leadership development for supporting a System of Care service delivery approach within their community (e.g., developing governance structures, leadership development, local planning, coordinated service delivery, coordinated training, shared technology, fiscal practices, etc.);
- Identify appropriate methodologies for demonstrating a System of Care practice model; and
- Identify challenges or issue areas to be addressed in a strategic plan for developing System of Care service approaches in Texas Communities.

This opportunity will allow the Travis County System of Care to receive technical assistance to enhance our current practices for the children, youth and families served by the Travis County System of Care Initiatives. It will further allow us the opportunity to participate in the potential development of a System of Care statewide and ensure that our experience and expertise is utilized to shape future services that could impact the citizens of Travis County.

The current System of Care management team will integrate the responsibilities of this RFI into their existing duties and the requirements and complementary to their current work assignments and positions.

**Background:**

The Children's Partnership, a SAMHSA funded community from 1998-2005, is the sustained organization leading the Travis County System of Care community. The Children's Partnership focuses primarily on providing services to children and youth with complex needs and their families, particularly children and adolescents with serious emotional disturbances (SED) and on "changing the way business is done" in child, youth, and family serving organizations. The Children's Partnership is committed to expanding Systems of Care efforts and promoting the wraparound approach to culturally appropriate, community based and family driven service delivery, as a means to achieving mental health transformation that will result in long-term recovery and success for our communities' children, youth, and families. The other Travis County System of Care initiatives are: TRIAD, Child Protective Services Reintegration Project (CRP), Community for Partners Bridge Coordination (CPC Bridge Services), Youth and

Family Assessment Center – Communities in Schools Care Coordination (YFAC-CIS), and Family Support Services (YFAC-FSS). Through the TCSOC initiatives, we serve approximately 200 families a year whose children and youth are experiencing significant challenges. TCSOC management staff oversees the structure, flexible funding, access and service delivery. The Travis County System of Care has been in existence for 13 years and originated with a federal grant in 1998. The Commissioner's Court has supported the System of Care Initiatives throughout that period.

cc: Mary Etta Gerhardt, Assistant County Attorney  
Andrea Colunga-Bussey, Director, Office of Children's Services

Travis County System of Care: HHSC RFI No.:529-12-0060

**Community Service Area:** Travis County

**Lead Agency for RFI:** Travis County Health and Human Services/Veteran Services (TCHHS/VS)

**Point of Contact:** Sonia Hartman, System of Care Manager employed by TCHHS/VS

**Documented Support for the proposal:** Please see attached letters of support

**Target Area of Proposal:**

The purpose of Travis County System of Care submitting this RFI is to enhance the functioning of our system of care in three critical areas: 1) Increase fidelity to the Wraparound and System of Care model through increased training and technical assistance to our System of Care partners; 2) Increase the voice and representation of children, youth and families throughout the Travis County System of Care continuum; 3) Increase the capacity of the Travis County System of Care continuum to serve additional families.

**Capacity to Implement:**

Travis County has the capability to partner effectively with ASSET to enhance our System of Care model and through that process identify those facets that should govern an expansion of System of Care statewide. The Travis County System of Care has numerous strengths and sustained systematic structures that will aide in this process, including: a continuum of programs under the umbrella of the System of Care (The Children's Partnership, TRIAD, Child Protective Services Reintegration Project, Community Partners for Children Bridge Coordination Services, Youth and Family Assessment Center – Communities In School Care Coordination and Family Support Services) which serve an average of 200 families a year; a database, The Clinical Manager (TCM) which is used by all System of Care programs; a training team which provides System of Care and Wraparound process training multiple times a year; dedicated TCHHS/VS staff to the System of Care including a System of Care manager, a quality assurance coordinator, and 3 parent partners (known as parent liaisons) that serve families enrolled in The Children's Partnership; a single point of access to the high-end System of Care programs (The Children's Partnership, TRIAD, CPC Bridge Coordination Services) through the Travis County Community Resource Coordination Group known in Travis County as Community Partners for Children (CPC); a Provider Network that is recruited, credentialed, contracted and managed by the local mental health authority – Austin Travis County Integral Care which consists of 130 service providers rendering both traditional and non-traditional services; and a flexible funding pool consisting of funds from TCHHS/VS, Travis County Juvenile Probation, and Austin Travis County Integral care – totaling annually \$657,000.

Travis County is a community with a continuum of Systems of Care Initiatives which includes: The Children's Partnership (TCP), TRIAD, Child Protective Services Reintegration Project (CRP), Community for Partners Bridge Coordination (CPC Bridge Services), Youth and Family Assessment Center – Communities in Schools Care Coordination (YFAC-CIS), and Family Support Services (YFAC-FSS)<sup>1</sup>. All Travis County System of Care Initiatives comply with four critical mandates. First, all direct service staff, managers and administration are trained on System of Care and the Wraparound process. Second, all initiatives utilize portions of The Clinical Manager (TCM) data system. Third, they fully utilize the wraparound process with a particular emphasis on family, child and youth engagement and empowerment. And finally, to promote family and youth voice and choice, when indicated, the initiatives utilize the provider network for services and supports.

---

<sup>1</sup> See attached Travis County System of Care Diagram

## Travis County System of Care: HHSC RFI No.:529-12-0060

The Children's Partnership, a SAMHSA funded community from 1998-2005, is the sustained organization leading the Travis County System of Care community. The Children's Partnership focuses primarily on providing services to children and youth with complex needs and their families, particularly children and adolescents with serious emotional disturbances (SED) and on "changing the way business is done" in child, youth, and family serving organizations. The Children's Partnership is committed to expanding Systems of Care efforts and promoting the wraparound approach to culturally appropriate, community based and family driven service delivery, as a means to achieving mental health transformation that will result in long-term recovery and success for our communities' children, youth, and families. The Children's Partnership (TCP) does not operate in a typical manner; its approach to serving families is unique. Instead of having one physical location where children, youth, and families come to receive services, TCP operates virtually. This means "the services are provided at the families' homes or at a community location." The 35 team members that carry out the work of TCP are all employed by partner agencies, which are spread throughout the community. The agencies include Travis County Juvenile Probation Department and Travis County Health and Human Services & Veteran Services, the local Mental Health Authority-Austin Travis County Integral Care, Texas Department of Family and Protective Services and four independent school districts, including Austin, Del Valle, Manor, and Pflugerville. These partner agencies and team members all work together to comprehensively meet the complex needs of participant children, youth, and their families.

TCP focused on systems development, setting up a governance board that included family members as well as agency leaders of partner agencies, and continuously assessing the needs of children's mental health services in Travis County. We have sustained and developed our partnerships over time. Additionally TCP takes the lead and provides once per month Wraparound Initiative trainings for all staff and provides once per month Supervisors meetings. The Children's Partnership focuses primarily on providing services to children and youth, ages 5-22, and their families who have complex mental health needs and have multi- system involvement. TCP also focuses on "changing the way business is done" in child, youth, and family serving organizations, increasing youth, and family voice and choice.

All referrals for TCP come through the Travis County Community Resource Coordination, renamed Community Partners for Children (CPC), and all referrals are dependent on partner eligibility. For example, only Manor ISD serves children and youth in special education and/or regular education; Austin, Del Valle, and Pflugerville ISD's only serve those enrolled in special education.

TRIAD, is a program that funds out of home placement for children and youth who cannot be safely maintained in their community. These placements occur locally, fully integrate the family in the treatment and are expected to be short in duration. All families who are enrolled in the TRIAD program are also enrolled in TCP.

CPS Reintegration is a program that facilitates the return of children and youth with severe emotional disturbance from a foster care placement to the community.

YFAC-CIS Care Coordination is a school-based mental health program that utilizes the System of Care and Wraparound process to improve the functioning of children, youth and families.

YFAC-SS is an office-based model that identifies children, youth and their families that are experiencing challenges and offers them access to wide-array of services using the System of Care and Wraparound process.



## Travis County System of Care: HHSC RFI No.:529-12-0060

CPC is a key partner in the Travis County System of Care. It serves as the single point of community access to services and supports for children, youth, and families. CPC supports families' access to the system of care in a distinctive way. CPC serves as the gateway to access high-end System of Care programs, such as The Children's Partnership, TRIAD, and CPC Bridge Services. CPC provides a unique opportunity for youth and families to share their experiences and talk about their hopes and needs with representatives from approximately 25 public and private organizations who meet together twice a month. Families who attend a Travis County CPC meeting leave with a plan of care that starts them on their way to accessing services in the community. The Children's Partnership parent liaisons and quality assurance coordinator continued active participation with Community Partners for Children supports the development of an initial multidisciplinary wraparound service plan for each family presented.

Travis County System of Care utilizes a single data management tool, The Clinical Manager (TCM). TCM software system, used since 1998, continues to track services, cost, and utilization rates. Additionally TCM serves as the automated client record system, which provides the mechanism for tracking demographics and other consumer profiling information, clinical information, system performance, model fidelity, child, youth, and family outcomes and other indicators of success in the System of Care. Travis County Health and Human Services and Veteran Services hosts and manages TCM.

All System of Care partners and their staff are trained initially on System of Care and the Wraparound process by the Travis County system of care training team which always includes a parent. This two and a half day training utilizes an established curriculum and offers CEU's via our ATCIC partner. The training team also developed a training curriculum for providers and currently provides training to the Youth Empowerment Services (YES) providers a Medicaid waiver pilot in Travis and Bexar County only. TCP also provides data training and SOC overview.

From 1998-2005, contributions to the flexible fund pool were consistently received from Travis County Juvenile Probation Department, (Juvenile Justice Partner) Austin Travis County MHMR Center-now renamed ATCIC, (Mental Health partner), Region XII Education Service Center, (Education partner) and Travis County Health and Human Services and Veteran Services, (Health and Human Services partner). Funds were allocated by contracts with the Local Mental Health Authority who served as the Fiscal Agent and Managed Service Organization (MSO) for TCP and now serve in that role for all the System of Care initiatives in Travis County.

Post-grant, contributions to the flexible fund pool continue to be received from Travis County Juvenile Probation Department, Austin Travis County Integral Care and Travis County Health and Human Services and Veteran Services. Non-Ed funds from Region XII Education Service Center, flow directly to the partner school districts (Manor, Austin, Del Valle, and Pflugerville Independent School Districts), responding to their requests. This method ensures that categorical funding doesn't drive the service delivery, but that youth and families have access to the full array of services and supports required for them to achieve their goals.

**Topics and Questions of Interest:**

Through this RFI, the Travis County System of Care will be able to further enhance fidelity to the System of Care model and the wraparound process; advance our family and youth voice; and expand our service model. The Travis County System of Care (TCSOC) has several strengths that will be an asset in the implementation of the RFI objectives. These assets include collaborative partners who believe in and value the system of care; committed partner agencies;

## Travis County System of Care: HHSC RFI No.:529-12-0060

flexible funding pool of local community dollars dedicated to SOC and wraparound process - \$657,000; an established Managed Service Organization and provider network; experienced and dedicated staff delivering services and supports; a continuum of care/services; CPC-our single point of entry; TCM-our shared data system; an experienced training team and curriculum with a partner to support CEU's; existing parent trainers; and access to NWI and all the training materials.

In assessing the functioning of the TCSOC three specific areas were identified that required further development and enhancement: 1)increased fidelity to the model through ongoing training and technical assistance to partners and direct staff; 2)increased family and youth voice throughout the continuum and finally 3)capacity building. It would be TCSOC goal to address these needs as a selected site.

The objectives for the TCSOC would be: to develop a curriculum for Advanced Care Coordination 101,102 & 103; develop a refresher training; develop a Certification Plan with CEU's; create a community plan for capacity building; and develop 5 new graduated families to be active leaders in the TCSOC.

The intended outcome of these activities is that Travis County SOC staff are certified and well trained. They would be able to identify "model drift" and self- correct. Supervisory staff would then be better able to provide technical support and monitor the strengths and needs of their staff. This would lead to increased consistency in service provision across the continuum. The community would have an accepted and documented plan to expand the capacity of our System of Care Initiatives. The family and youth voice will be expanded at all levels of the TCSOC continuum.

The outcome measures for the TCSOC objectives are: 1) Care Coordination and Parent Liaison staff in the TCSOC will maintain high-fidelity to the Wraparound process and the System of Care which will result in increased levels of family engagement, diverse service utilization, program satisfaction and goal attainment. This will be measured through a variety of methods: a pre/post test of the care coordinators and liaisons; surveys completed by family and youth; data collected from TCM regarding the diversity of services and goal attainment. 2) Family representation will be visible and active at all levels of TCSOC. This will be measured by the number of family members on the TCP board, CPC, as well as, a defined role for family members with each of the TCSOC initiatives. 3) The ability to expand services under the TCSOC. This will be measured by the increase in care coordination capacity and the number of families served. This information will be available through TCM.

This demonstration will have some similar aspects to other System of Care communities including the same values, guiding principles, essential elements, and practice requirements. However, each of these will be individualized per their community population focus (early childhood or older children, youth and their families) and location (urban or rural). TCSOC is an urban location serving one county comprised of 1,024,266 persons. Our population focus is children and youth 5-22 and their families. We have several programs under our System of Care umbrella that has been developed into a coordinated continuum of care. Our site has several established structures that support our System of Care efforts. The community has 13 years of experience in SOC and the wraparound process.

The strengths of the TCSOC include a strong collaboration among the Travis County System of Care Initiatives, partner commitment with flexible funding and sustained staff who are experienced and dedicated, an established MSO & provider network, continuum of care, single point of community collaboration through CPC, TCM data base, and an experienced training

Travis County System of Care: HHSC RFI No.:529-12-0060

team and employed parent partners. The identified weaknesses of the TCSOC are that the staff are isolated in partner agencies and require support and ongoing technical assistance to increase fidelity to the model; that the family voice is not pronounced throughout all parts of the TCSOC continuum; and there is currently not an identified way to expand the capacity of the TCSOC.

Potential challenges for the evaluation are that several of the instruments will need to be created and specific reports developed and generated within TCM data base. It will require additional data entry and forms completion by the care coordinators, liaisons and youth and families.

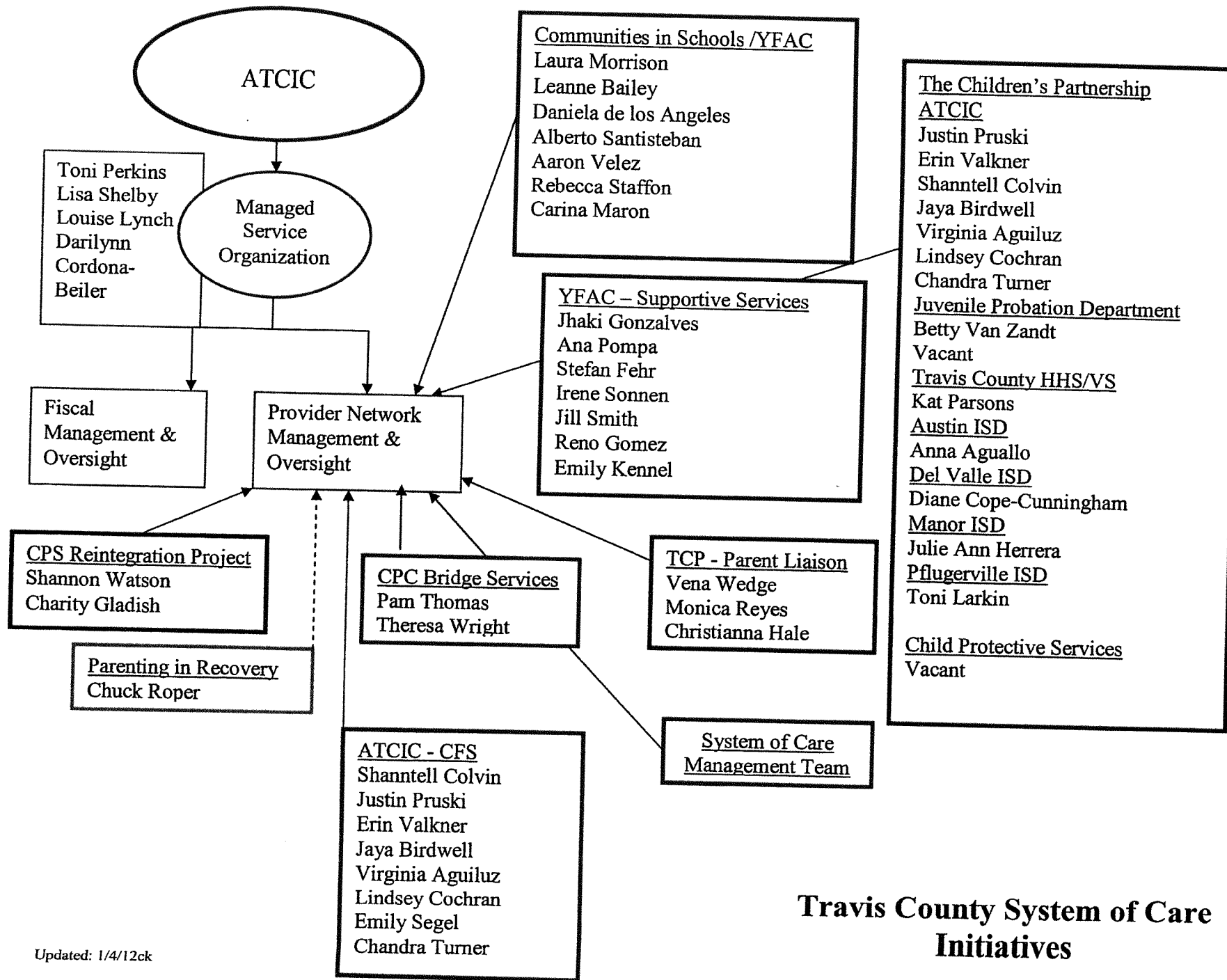
TCSOC would request technical assistance in these areas: 1) Curriculum development, and identification of fidelity tools, 2) Guidance on further integrating family and youth voice and, 3) identification of ways TCSOC can expand coordination and liaison services with existing resources. This technical assistance is required because our site has plateaued in functioning and service delivery and requires the perspective and innovation of technical advisors to progress to the next level of service delivery.

TCP and the TCSOC have a longstanding partnership with HHSC and remain committed to improving the children’s mental health service delivery in the state of Texas. We have been active supporters of improving children’s mental health in Texas since 1998, the onset of our SAMHSA grant. TCP and the TCSOC have been a collaborative partner and trainer with the YES Waiver Pilot, a 1915(c) Medicaid Home and Community-Based services waiver. TCP and the TCSOC have taken the lead in promoting mental health awareness and decreasing stigma in the celebration of National Children’s Mental Health Awareness Day. TCP and the TCSOC is an active member of the local Child and Youth Mental Health Planning Partnership (CYMHPP); CYMHPP is the collaborative children’s mental health planning body for Travis County. TCP fully participated in the National Evaluation with ORC MACRO during 6 years of the grant. At that time, the University Of Texas School Of Social Work Research was the evaluation partner. For year 7, ATCIC worked with ORC MACRO to ensure a successful transition and set up our current intake and 90-day follow-up evaluation procedures which include the Ohio Scales, the Education Questionnaire and a substance use/abuse survey. TCM is used to generate quarterly evaluation reports with relevant statistical information so that program trends can be observed and analyzed. The TCHHS&VS Office of Children’s Services is currently complying with 2 Federal grants and evaluation tools.

TCSOC is a partner with the larger community to provide children’s mental health services. Through the TCSOC initiatives, we serve approximately 200 families a year whose children and youth are experiencing significant challenges. TCSOC management staff oversees the structure, flexible funding, access and service delivery. TCSOC has limited capacity to provide clinical oversight and meets that need through collaboration with our partner agencies, such as Austin Travis County Integral Care.

Our training team played an active role in the development and review of this document; it was reviewed by our parent partner, Vena Wedge and Geneva Martinez, parent trainer. Ms. Wedge is a parent liaison with TCP and is the mother of a twenty year old son who has been diagnosed with Cerebral Palsy, Hydrocephalus, depression and an anxiety disorder. Ms. Martinez is a graduate from TCP with 4 children who have mental health diagnosis and has accessed services on their behalf through multiple child-serving agencies.

Approved by Travis County Representative: \_\_\_\_\_  
Honorable Samuel T. Biscoe, Travis County Judge



## Travis County System of Care Initiatives

## Letter of Support

December 27, 2011

Alice Hanna, CTPM  
HHSC Enterprise Contract and Procurement Services (ECPS) Division  
4405 North Lamar Boulevard  
Austin, Texas 78756-3422  
Fax: (512) 206-5475  
Tel. (512) 206-5416  
[Alice.Hanna@hhsc.state.tx.us](mailto:Alice.Hanna@hhsc.state.tx.us)

Re: Travis County Health and Human Services/Veteran Services  
Office of Children Services  
Travis County System of Care Initiatives (The Children's Partnership; TRIAD; CPS  
Reintegration Project; YFAC – Communities in Schools; YFAC- Family Supportive  
Services)  
Community Demonstration for System of Care Expansion –  
Achieving Successful Systems Enriching Texas (ASSET)  
RFI No. : 529-12-0060

To Whom It May Concern:

On behalf of YFAC-Family Supportive Services, I am pleased to submit this letter in support of the Travis County Health and Human Services and Veteran Services (TCHHS/VS) submission of interest for the **Community Demonstration for System of Care Expansion – Achieving Successful Systems Enriching Texas (ASSET) – Request For Interest (RFI) proposal**. The RFI is for communities interested in demonstrating a System of Care service delivery approach for children with serious emotional disturbances which may be used to inform the expansion of the System of Care practices in Texas. The purpose of this Request for Interest (RFI) is to identify three communities that will receive national and in-state technical assistance through HHSC and its collaborators to inform a statewide strategic plan for further implementation of System of Care in Texas. Selected communities will participate in a collaborative learning community and will be provided targeted training and technical assistance to address community-identified objectives.

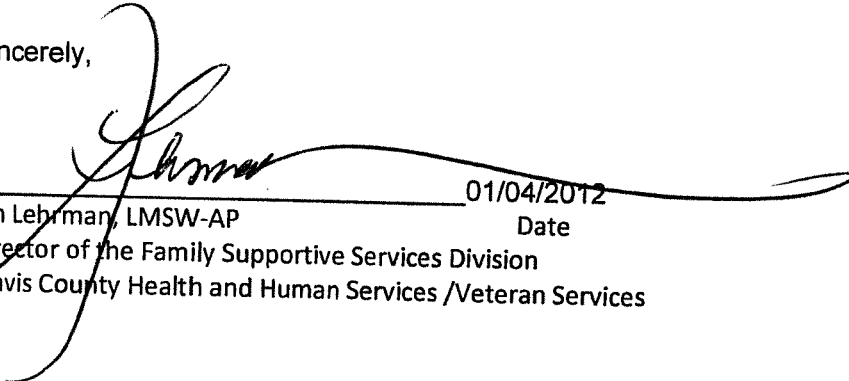
The TCHHS/VS proposal will highlight the System of Care Initiatives in the Travis County community. The focus will be on partner and family collaborations, as well as the current structures and systems that support and maintain the Travis County System of Care. The proposal identifies fidelity to the System of Care values and the wraparound model as a key area of enhancement for Travis County. This includes a focus on family voice and representation; augmentation of our current training practices; and capacity building.

YFAC-Family Supportive Services, as a supporter of this proposal, commits to the following roles and responsibilities as a partner of the Travis County System of Care:

- 1) Continued support of the Travis County System of Care;
- 2) Identify a person(s) from your Agency to be a liaison for this proposal, if awarded;
- 3) Collaborate with TCHHS/VS on the evaluation component of the proposal, if awarded;
- 4) When requested attend ASSET meetings and provide your expertise and recommendations as it relates to System of Care and the expansion statewide;
- 5) Participate in ASSET supported training and technical assistance.

YFAC-Family Supportive Services is excited about the opportunity to work with TCHHS/VS to enhance our local System of Care community while participating in the expansion of this model statewide.

Sincerely,

  
\_\_\_\_\_  
01/04/2012  
Date  
Jim Lehrman, LMSW-AP  
Director of the Family Supportive Services Division  
Travis County Health and Human Services /Veteran Services

\_\_\_\_\_  
Date  
Sherri Fleming  
County Executive  
Travis County Health and Human Services/Veteran Services

\_\_\_\_\_  
Date  
Honorable Samuel T. Biscoe  
Travis County Judge

## Letter of Support

December 27, 2011

Alice Hanna, CTPM  
HHSC Enterprise Contract and Procurement Services (ECPS) Division  
4405 North Lamar Boulevard  
Austin, Texas 78756-3422  
Fax: (512) 206-5475  
Tel. (512) 206-5416  
[Alice.Hanna@hhsc.state.tx.us](mailto:Alice.Hanna@hhsc.state.tx.us)

Re: Travis County Health and Human Services/Veteran Services  
Office of Children Services  
Travis County System of Care Initiatives (The Children's Partnership; TRIAD; CPS  
Reintegration Project; YFAC – Communities in Schools; YFAC- Family Supportive  
Services)  
Community Demonstration for System of Care Expansion –  
Achieving Successful Systems Enriching Texas (ASSET)  
RFI No. : 529-12-0060

To Whom It May Concern:

On behalf of Travis County Health and Human Services and Veteran Services, I am pleased to submit this letter in support of the Travis County Health and Human Services and Veteran Services (TCHHS/VS) submission of interest for the **Community Demonstration for System of Care Expansion – Achieving Successful Systems Enriching Texas (ASSET) – Request For Interest (RFI) proposal.** The RFI is for communities interested in demonstrating a System of Care service delivery approach for children with serious emotional disturbances which may be used to inform the expansion of the System of Care practices in Texas. The purpose of this Request for Interest (RFI) is to identify three communities that will receive national and in-state technical assistance through HHSC and its collaborators to inform a statewide strategic plan for further implementation of System of Care in Texas. Selected communities will participate in a collaborative learning community and will be provided targeted training and technical assistance to address community-identified objectives.

The TCHHS/VS proposal will highlight the System of Care Initiatives in the Travis County community. The focus will be on partner and family collaborations, as well as the current structures and systems that support and maintain the Travis County System of Care. The proposal identifies fidelity to the System of Care values and the wraparound model as a key area of enhancement for Travis County. This includes a focus on family voice and representation; augmentation of our current training practices; and capacity building.

Travis County Health and Human Services and Veteran Services, as a supporter of this proposal, commits to the following roles and responsibilities as a partner of the Travis County System of Care:

- 1) Continued support of the Travis County System of Care;
- 2) Identify a person(s) from your Agency to be a liaison for this proposal, if awarded;
- 3) Collaborate with TCHHS/VS on the evaluation component of the proposal, if awarded;
- 4) When requested attend ASSET meetings and provide your expertise and recommendations as it relates to System of Care and the expansion statewide;
- 5) Participate in ASSET supported training and technical assistance.

Travis County Health and Human Services and Veteran Services are excited about the opportunity to work with TCHHS/VS to enhance our local System of Care community while participating in the expansion of this model statewide.

Sincerely,

\_\_\_\_\_  
Sherri Fleming Date  
County Executive  
Travis County Health and Human Services/Veteran Services

\_\_\_\_\_  
Honorable Samuel T. Biscoe Date  
Travis County Judge





Letter of Support

January 4, 2012

Alice Hanna, CTPM  
HHSC Enterprise Contract and Procurement Services (ECPS) Division  
4405 North Lamar Boulevard  
Austin, Texas 78756-3422  
Fax: (512) 206-5475  
Tel. (512) 206-5416  
[Alice.Hanna@hhsc.state.tx.us](mailto:Alice.Hanna@hhsc.state.tx.us)

Re: Travis County Health and Human Services/Veteran Services and Office of Children Services  
Travis County System of Care Initiatives (The Children's Partnership; TRIAD; CPS Reintegration  
Project; YFAC – Communities in Schools; YFAC- Family Supportive Services)  
Community Demonstration for System of Care Expansion –Achieving Successful Systems Enriching  
Texas (ASSET) RFI No: 529-12-0060

To Whom It May Concern:

On behalf of Austin Travis County Integral Care, I am pleased to submit this letter in support of the Travis County Health and Human Services and Veteran Services (TCHHS/VS) submission of interest for the **Community Demonstration for System of Care Expansion – Achieving Successful Systems Enriching Texas (ASSET) – Request For Interest (RFI) proposal.** The RFI is for communities interested in demonstrating a System of Care service delivery approach for children with serious emotional disturbances which may be used to inform the expansion of the System of Care practices in Texas. The purpose of this Request for Interest (RFI) is to identify three communities that will receive national and in-state technical assistance through HHSC and its collaborators to inform a statewide strategic plan for further implementation of System of Care in Texas. Selected communities will participate in a collaborative learning community and will be provided targeted training and technical assistance to address community-identified objectives. As a graduated SAMHSA System of Care community, Travis County, through its strong local collaborative and partnerships, has been very successful in sustaining the values and principles of the system of care model, implemented since 1998.

The TCHHS/VS proposal will highlight the System of Care Initiatives in the Travis County community. The focus will be on partner and family collaborations, as well as the current structures and systems that support and maintain the Travis County System of Care. The proposal identifies fidelity to the System of Care values and the wraparound model as a key area of enhancement for Travis County. This includes a focus on family voice and representation; augmentation of our current training practices; and capacity building.

Austin Travis County Integral Care, as a longtime partner and collaborator of the Travis County systems of care initiative and as a supporter of this proposal, commits to the following roles and responsibilities as a partner of the Travis County System of Care:

- 1) Continued support of the Travis County System of Care;
- 2) Identify a person(s) from your Agency to be a liaison for this proposal, if awarded;
- 3) Collaborate with TCHHS/VS on the evaluation component of the proposal, if awarded;
- 4) When requested attend ASSET meetings and provide your expertise and recommendations as it relates to System of Care and the expansion statewide;
- 5) Participate in ASSET supported training and technical assistance.

Austin Travis County Integral Care is excited about the opportunity to continue work with TCHHS/VS to enhance our local System of Care community while participating in the expansion of this model statewide.

Sincerely,

A handwritten signature in cursive script that reads "David Evans".

David Evans, Chief Executive Officer  
Austin Travis County Integral Care

## Letter of Support

December 27, 2011

Alice Hanna, CTPM  
HHSC Enterprise Contract and Procurement Services (ECPS) Division  
4405 North Lamar Boulevard  
Austin, Texas 78756-3422  
Fax: (512) 206-5475  
Tel. (512) 206-5416

Re: Travis County Health and Human Services/Veteran Services  
Office of Children Services  
Travis County System of Care Initiatives (The Children's Partnership; TRIAD; CPS  
Reintegration Project; YFAC – Communities in Schools; YFAC- Family Supportive  
Services)  
Community Demonstration for System of Care Expansion –  
Achieving Successful Systems Enriching Texas (ASSET)  
RFI No. : 529-12-0060

To Whom It May Concern:

On behalf of Casey Family Programs, I am pleased to submit this letter in support of the Travis County Health and Human Services and Veteran Services (TCHHS/VS) submission of interest for the **Community Demonstration for System of Care Expansion – Achieving Successful Systems Enriching Texas (ASSET) – Request For Interest (RFI)proposal.** The RFI is for communities interested in demonstrating a System of Care service delivery approach for children with serious emotional disturbances which may be used to inform the expansion of the System of Care practices in Texas. The purpose of this Request for Interest (RFI) is to identify three communities that will receive national and in-state technical assistance through HHSC and its collaborators to inform a statewide strategic plan for further implementation of System of Care in Texas. Selected communities will participate in a collaborative learning community and will be provided targeted training and technical assistance to address community-identified objectives.

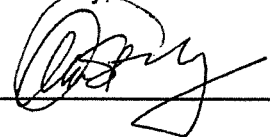
The TCHHS/VS proposal will highlight the System of Care Initiatives in the Travis County community. The focus will be on partner and family collaborations, as well as the current structures and systems that support and maintain the Travis County System of Care. The proposal identifies fidelity to the System of Care values and the wraparound model as a key area of enhancement for Travis County. This includes a focus on family voice and representation; augmentation of our current training practices; and capacity building.

Casey Family Programs, as a supporter of this proposal, commits to the following roles and responsibilities as a partner of the Travis County System of Care:

- 1) Continued support of the Travis County System of Care;
- 2) Identify a person(s) from your Agency to be a liaison for this proposal, if awarded;
- 3) Collaborate with TCHHS/VS on the evaluation component of the proposal, if awarded;
- 4) When requested attend ASSET meetings and provide your expertise and recommendations as it relates to System of Care and the expansion statewide;
- 5) Participate in ASSET supported training and technical assistance.

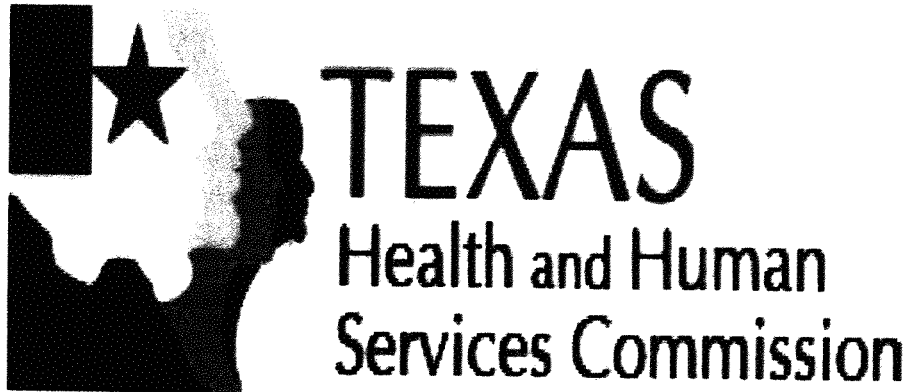
Casey Family Programs is excited about the opportunity to work with TCHHS/VS to enhance our local System of Care community while participating in the expansion of this model statewide.

Sincerely,

 1/4/12  
Date

Exec. Director Austin Field Office  
Title

Casey Family Programs  
Organization



**Tom Suehs, Executive Commissioner**

**Request for Interest (RFI)**

**For**

**Community Demonstration for System of Care Expansion –  
Achieving Successful Systems Enriching Texas (ASSET)**

**RFI No. : 529-12-0060**

**Date of Release: December 5, 2011**

**CPA Class/Item Codes: 952-59, 961-58, & 962-58**

## Table of Contents

<b>1. General Information.....</b>	<b>3</b>
1.1. Scope.....	3
1.2. HHSC Point of Contact.....	3
1.3. Procurement Schedule .....	3
1.4. Mission Statement .....	3
1.5. Mission Objectives.....	4
1.6. Background.....	4
1.7. HHSC Addendums and Announcements Regarding this RFI .....	5
<b>2. Mission Results/Scope of Work.....</b>	<b>6</b>
2.1. General Scope.....	6
2.2. Topics and Questions of Interest .....	6
<b>3. General Instructions and Proposal Requirements .....</b>	<b>8</b>
3.1. Questions and Comments .....	8
3.2. Response Submission, Date, Time and Location.....	8
3.3. Copies of Response .....	8
3.4. Disclaimers .....	8

**1. General Information**

**1.1. Scope**

The State of Texas, by and through the Texas Health and Human Services Commission (HHSC), requests that communities interested in demonstrating a System of Care service delivery approach for children with serious emotional disturbances respond with a proposal that may be used to inform the expansion of System of Care practices in Texas. Authority to conduct this demonstration is through a federal grant project through the Center for Mental Health Services, Substance Abuse and Mental Health Services Administration (SAMHSA) grant opportunity #SM-11-008.

**1.2. HHSC Point of Contact**

The sole point of contact for inquiries concerning this RFI is:

Alice Hanna, CTPM  
 HHSC Enterprise Contract and Procurement Services (ECPS) Division  
 4405 North Lamar Boulevard  
 Austin, Texas 78756-3422  
 Fax: (512) 206-5475  
 Tel. (512) 206-5416  
[Alice.Hanna@hhsc.state.tx.us](mailto:Alice.Hanna@hhsc.state.tx.us)

All communications relating to this RFI must be directed to the HHSC contact person named above. All communications between respondents and other HHSC staff members concerning this RFI are strictly prohibited.

**1.3. Procurement Schedule**

All dates are subject to change at HHSC's discretion.

RFI Schedule	
RFI Release Date	December 5, 2011
Vendor Questions Due	December 16, 2011, 2:00 p.m. CST
Response to Vendor Questions Posted	January 5, 2012
Responses Due	January 17, 2012, 2:00 p.m. CST
Review and selection of the top 6 candidate sites	January 25, 2012
Site interviews of the top 6 candidate sites	February 9, 2012
Corporative Agreement with the top 3 demonstration sites	February 10, 2012

**1.4. Mission Statement**

In order to comply with the terms and conditions of the ASSET federal grant objectives, HHSC is required to propose a strategic plan to implement System of Care practices within Texas

communities to improve the service delivery and outcomes of children and youth with serious emotional disturbances and their families.

HHSC intends to competitively solicit proposals from communities interested in developing or enhancing a System of Care service delivery approach. The purpose of this Request for Interest (RFI) is to identify three communities that will receive national and in-state technical assistance through HHSC and its collaborators to inform a statewide strategic plan for further implementation of System of Care in Texas. Selected communities will participate in a collaborative learning community and will be provided targeted training and technical assistance to address community-identified objectives.

### 1.5. Mission Objectives

It is HHSC's intent that, through this RFI, it will gain the necessary knowledge and understanding to meet its stated mission through the following objectives:

- Identify communities that have interest in various stages (beginning or early stages to advanced stages) of systems development for supporting a System of Care service delivery approach within their community (e.g., developing governance structures, leadership development, local planning, coordinated service delivery, coordinated training, shared technology, fiscal practices, etc.);
- Identify appropriate methodologies for demonstrating a System of Care practice model; and
- Identify challenges or issue areas to be addressed in a strategic plan for developing System of Care service approaches in Texas communities.

### 1.6. Background

The Health and Human Services Commission (HHSC) was created in 1991 to oversee and coordinate the planning and delivery of health and human services in Texas. It is established pursuant to Chapter 531, Texas Government Code (<http://www.capitol.state.tx.us/statutes/gv.toc.htm>) and is responsible for oversight of Texas Health and Human Services agencies. HHSC Enterprise Contracting and Procurement Services (ECPS) will administer this RFI and handle communications from respondents. In addition, ECPS directs procurement processes and directs the execution of contracts.

"System of Care" is a term of art regarding a service delivery approach that SAMSHA has endorsed through cooperative agreements with local communities. The System of Care approach builds upon community capacity to address the needs of children and youth with serious emotional disturbances and their families. A System of Care is an adaptive network of structures, processes, and relationships grounded in System of Care values and principles that provide children and youth with serious emotional disturbances and their families with access to and availability of necessary services and supports across administrative and funding jurisdictions. System of Care core values and principles and related information are available on the website of the Technical Assistance Partnership, a SAMHSA contractor, at: <http://www.tapartnership.org/SOC/SOCvalues.php>



Community Demonstration for System of Care Expansion – Achieving Successful Systems Enriching Texas (ASSET)  
RFI No. : 529-12-0060  
Section 1 General Information

---

HHSC was awarded a one-year federal grant through SAMHSA to develop a strategic plan to expand System of Care practices in Texas. Beginning in 1998, Texas communities have received 6 six-year cooperative agreements with SAMHSA to develop a System of Care within local communities. In 2011, SAMHSA has turned their focus toward supporting statewide approaches to System of Care development. Texas was 1 of 24 successful entities that competed for this grant opportunity. The Texas grant is entitled: Achieving Successful Systems Enriching Texas (ASSET).

**1.7. HHSC Addendums and Announcements Regarding this RFI**

HHSC will post all official communication regarding this RFI on its website. HHSC reserves the right to revise the RFI at any time. Any changes, addendums, or clarifications will be made in the form of written responses to respondent questions, amendments, or addendum issued by HHSC on its website. Respondents should check the website frequently for notice of matters affecting the RFI. To access the website, go to the "[HHSC Contracting Opportunities](#)" page and enter a search for this RFI.

## **2. Mission Results/Scope of Work**

### **2.1 General Scope**

The intent of this RFI is to receive and evaluate proposals from communities who are interested in launching a System of Care service delivery approach or communities interested in enhancing an existing System of Care service delivery system. Three communities will be selected to receive in-state and national technical assistance to demonstrate System of Care practices that may be used to develop an overall strategic plan for statewide expansion of System of Care.

Interested entities will define their “community” service area (e.g., a city, a county, multiple counties). The community’s proposal should target:

- systems development (e.g., setting up a collaborative governance body and assessing the assets and needs of children’s mental health services in the community);
- a particular population of focus (e.g., young children with social emotional development needs, children and youth with mental health needs involved in the child welfare system, youth with mental health needs involved in the juvenile justice system, youth with mental health needs transitioning to adulthood, etc.);
- an enhancement to a particular issue area (collaborative financing strategies, data sharing strategies, launching a new evidence-based practice/s, etc.); or
- assure stakeholder commitment for participation in ASSET supported training and technical assistance.

The proposal should include an explanation of the community’s current capacity to implement one or more of the areas of interest above for a System of Care service delivery approach. The proposal will identify an entity as their System of Care project lead, including a designated individual as a point of contact for that community. That person will be responsible for facilitating communication and serving as a liaison between local and state points of contact. There should be documented support for the proposal from agencies and organizations in the community that provide or advocate for mental health services to those children and/or youth with serious emotional disturbances targeted in that community.

All interested parties may respond to this RFI.

### **2.2. Topics and Questions of Interest**

Any response to this RFI should address, but not be limited to, the following topics and questions of interest:

- TQ-1** Describe the community strengths and needs as they relate to the proposed targeted objectives.
- TQ-2** Describe the appropriate goals and objectives for the proposed area of System of Care development or enhancement.
- TQ-3** Describe the intended outcome of the System of Care activity(ies) to be implemented.

Community Demonstration for System of Care Expansion – Achieving Successful Systems Enriching Texas (ASSET)  
RFI No. : 529-12-0060  
Section 2. Mission Result/Scope of Work

---

- TQ-4** Describe the appropriate outcome measures to evaluate the impact of the demonstration. Include the data sources for each outcome measure and, if included, the sampling methodology.
- TQ-5** Describe how the effects of the demonstration may be similar or different from other community initiatives occurring in Texas.
- TQ-6** Explain the strength and weaknesses of the System of Care approach you have described. Include potential issues related to the evaluation of the demonstration.
- TQ-7** Identify topics that would be important to receive specific technical assistance and explain why.
- TQ-8** Describe your interest in partnering with HHSC regarding System of Care development within your community. Include:
- your interest in improving children’s mental health service delivery;
  - your capabilities and limitations as related to children’s mental health service delivery;
  - any evaluations of children’s mental health service delivery projects you have conducted or are currently conducting;
  - the name and a description of any organization, corporation, partnership, or other such entity you represent and any health services provided or operated by that organization, corporation, or partnership; and
  - the role that families or youth with mental health experience have had in the proposal development.

### **3. General Instructions and Proposal Requirements**

1. Responses to this RFI must total no more than five pages in length, single-spaced with Times Roman 12 font, and 1-inch margins, and must be typewritten or legibly printed and signed. Additional pages may contain contact information, collaborators, qualifications of project lead, or letters of support.
2. This RFI is issued for the purpose of obtaining information for consideration by HHSC and/or its agencies for informing a statewide System of Care expansion plan.
3. This RFI constitutes a solicitation of proposals.
4. This RFI does not constitute a commitment to conduct procurement, or an offer to contract or a prospective contract. HHSC will not award a contract as a result of this RFI, but a letter of agreement will be developed. HHSC will not be liable for any costs incurred by respondents in the preparation and submission of information in responses to this RFI.
5. All information received by HHSC becomes HHSC's property and will not be returned to the sender. There will be no acknowledgment by HHSC of receipt of the information. Acceptance of responses to this RFI places no obligations of any kind upon HHSC.

#### **3.1. Questions and Comments**

All questions and comments regarding this RFI should be sent to the HHSC Point of Contact (see Section 1.2). Questions must reference the appropriate RFI page and section number, and must be submitted by the deadline set forth in Section 1.3. HHSC will not respond to questions received after the deadline. HHSC's responses to vendor questions will be posted to the HHSC Website. HHSC reserves the right to amend answers prior to the proposal submission deadline.

#### **3.2. Response Submission, Date, Time and Location**

Responses to this RFI must be submitted by the deadline set forth in Section 1.3. Responses must be submitted to HHSC's designated point-of-contact as identified in Section 1.2. If after the review of the responses, HHSC determines that it is in the best interest of HHSC, HHSC staff may contact respondents for further information.

#### **3.3. Copies of Response**

Respondents must submit one (1) electronic submission (must be with Microsoft Office applications) to the designated HHSC point-of-contact by the date and time specified in this RFI.

#### **3.4. Disclaimers**

HHSC, at its sole discretion, may or may not issue a related solicitation or may issue multiple solicitations based on the responses to this RFI. Responding to this RFI is not a condition for eligibility to respond to any subsequent solicitation. Responses to this RFI will not have any bearing, positive or negative, on the evaluation and respondent selection resulting from any proposals that may be received in response to any subsequent solicitation.

Community Demonstration for System of Care Expansion – Achieving Successful Systems Enriching Texas (ASSET)  
RFI No. : 529-12-0060  
Section 3. General Instructions and Proposal Requirements

---

Any information received from respondents to the RFI in any form may be used by HHSC without restriction for any purpose determined by HHSC.

HHSC reserves the right to request presentations from any or all respondents to this RFI to further understand the submittal responses. Respondents who are requested to make such presentations are under no legal obligation to make them. Respondents to this RFI will not be reimbursed for any expense incurred in preparing a response.