



# Travis County Commissioners Court Agenda Request

**Meeting Date:** November 3, 2011 Work Session

**Prepared By:** Randy Nicholson, AICP **Phone #:** 854-4603

**Division Director/Manager:** Randy Nicholson, AICP

**Department Head:** Steven M. Manilla, P.E., County Executive-TNR

**Sponsoring Court Member:** Commissioner Huber, Precinct Three  
Commissioner Eckhardt, Precinct Two

**AGENDA LANGUAGE:** Discuss and receive update regarding the comprehensive plan status.

**BACKGROUND/SUMMARY OF REQUEST:**

On November 17, 2009 Voting Session the Commissioners Court directed TNR to develop a comprehensive plan for the unincorporated areas of Travis County.

**STAFF RECOMMENDATIONS:**

Staff request the Commissioners Court to review and comment on project status.

**ISSUES AND OPPORTUNITIES:**

The workshop is an opportunity for the Commissioners Court to comment on the project status and further direct staff.

**FISCAL IMPACT AND SOURCE OF FUNDING:**

None

**ATTACHMENTS/EXHIBITS:**

Powerpoint presentation

**REQUIRED AUTHORIZATIONS:**

Cynthia McDonald	Financial Manager	TNR	854-4239
Steve Manilla	County Executive	TNR	854-9429

**CC:**


--	--	--	--

: :  
**0501 - Comprehensive Planning-**

# Travis County Land, Water, and Transportation Plan

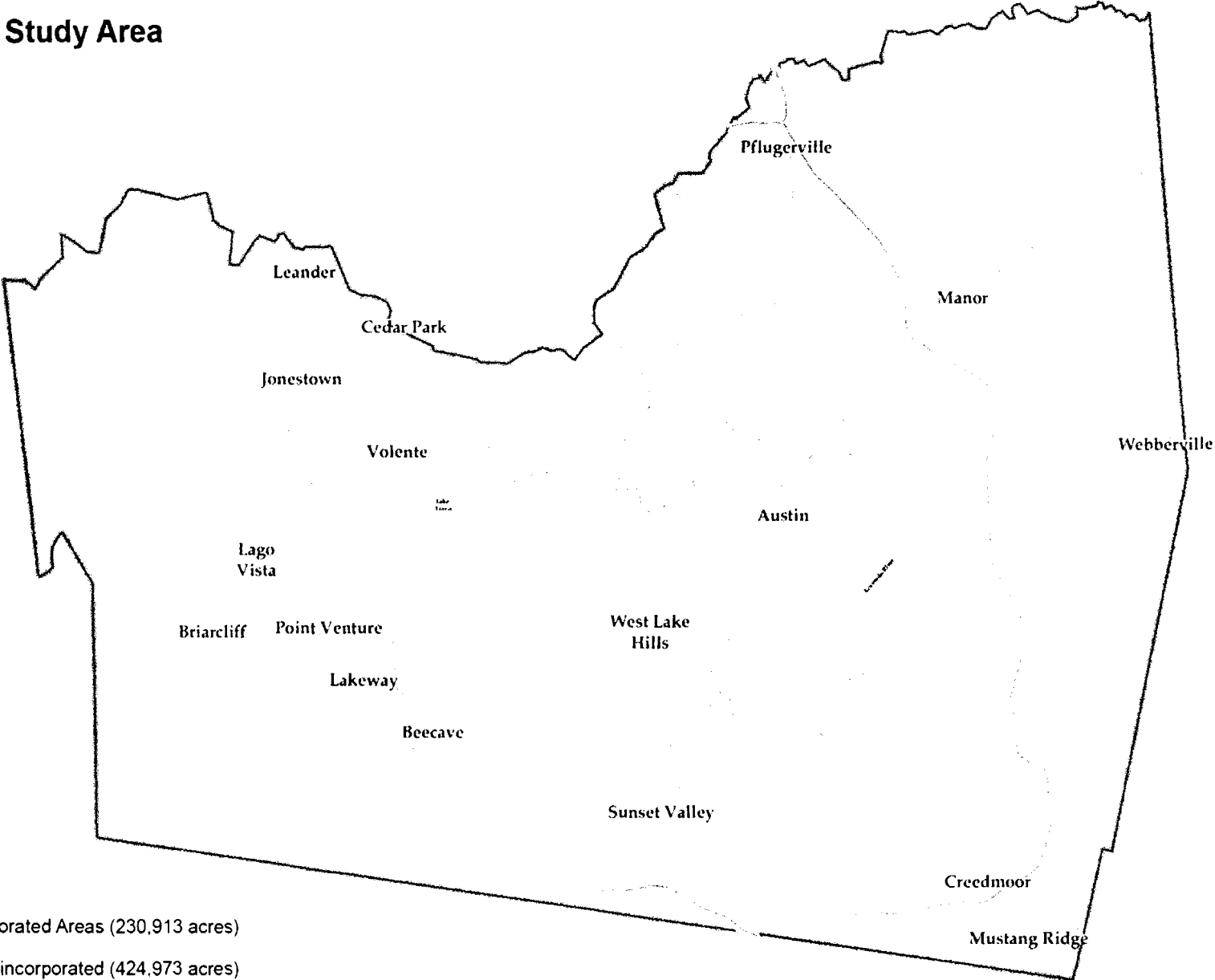


Transportation and Natural Resources

# What is the Land, Water and Transportation Plan?

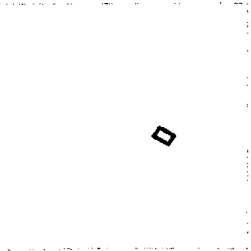
A set of long-term goals and policies that the Commissioners Court will use to guide orderly development and appropriate preservation of land and waterways within the unincorporated areas of the county.

# Geographic Study Area



Population 2010  
Incorporated 830,449  
Unincorporate 193,817

Population Estimate 2035  
Incorporated 1,247,444  
Unincorporate 290,601



Incorporated Areas (230,913 acres)  
Unincorporated (424,973 acres)

# Population Growth

Population	Travis County	Incorporated	Unincorporated
1990 Census	576,407		
2000 Census	812,280		
2010 Census	1,024,266	830,449	193,817
2035 Forecast*	1,538,045	1,247,444	290,601**

\* CAMPO 2035 Regional Transportation Plan

\*\* Forecast assumes no additional annexations through 2035

Forecast represents an additional 58 persons per day for the next 25 years

# What role will County have in shaping...

- Where people will live, work and play and how they will commute?
- How growth will impact existing communities, natural resources and transportation systems?

# Planning Challenges

- Maximizing county strengths and minimizing weaknesses
- Balancing growth, quality of life and property rights
- Coordinating private and public investment



# Practical Uses of the Land, Water, and Transportation Plan

- Identify where the county will incent development
- Identify where the county will incent preservation
- Determine how the county will incent items 1 & 2
  - Financial Methods
  - Policy / Regulation Practices
  - Legal Authority / Legislative Initiatives
- Guide consistent collaboration at the regional and local level
- Provide guidance to minimize incompatible land uses
- Foster communication

# Horizon Issues

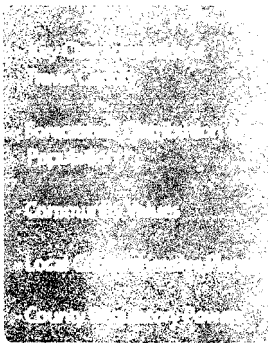
## County participation in ...

- Regulation of groundwater and surface water
- Regulation of drainage outside the right-of-way
- Public transit (planning, funding & operation)
- Disaster management

# Exhibit A: Information Flow

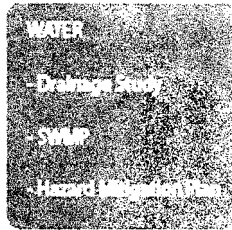
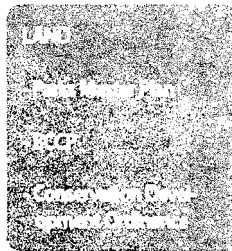
## Planning Context

April - May



## Summaries

June - September



Work Session 1

## Comprehensive Plan

October - January



Work Session 2

February - April



Work Session 3

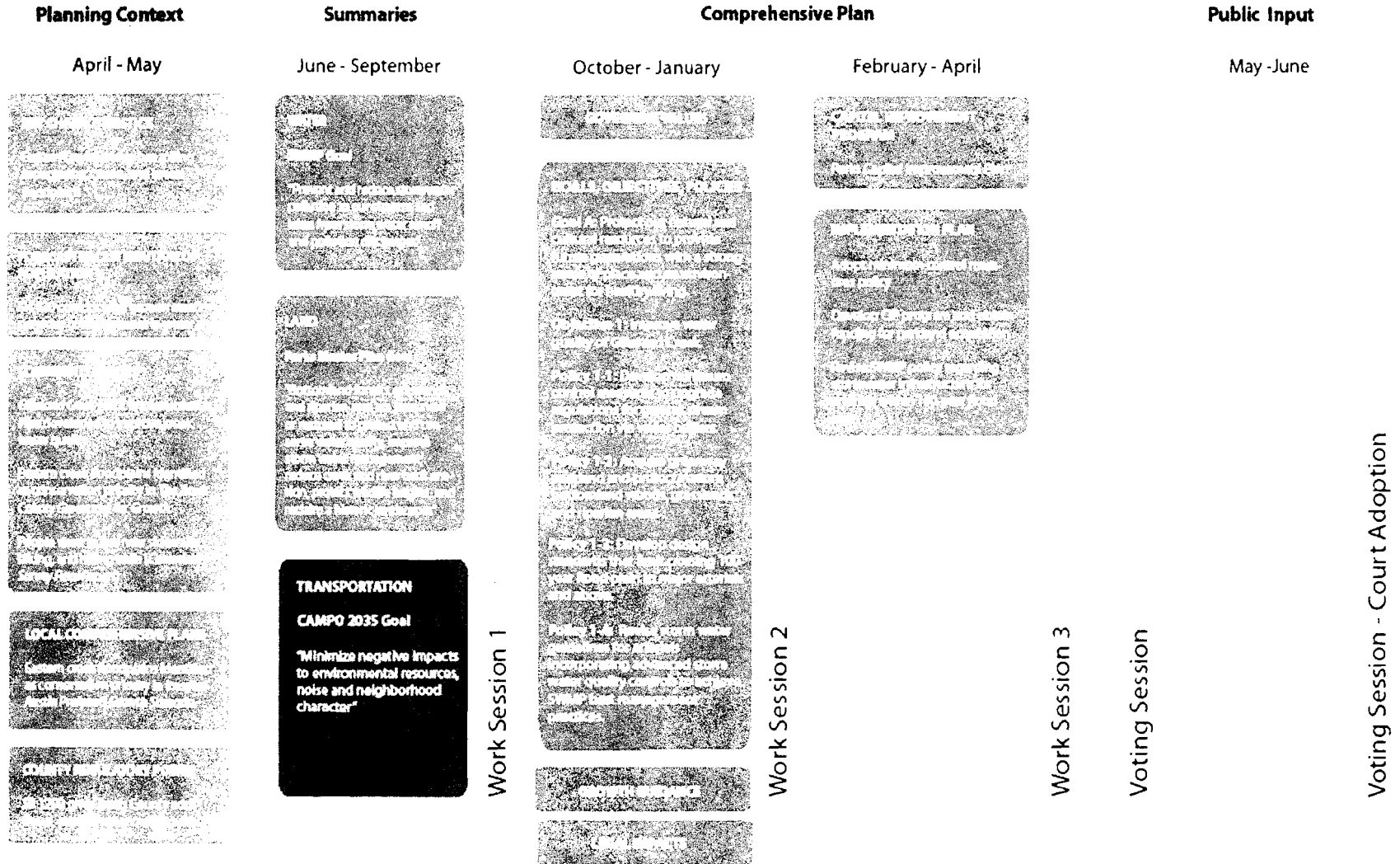
Voting Session

## Public Input

May - June

Voting Session - Court Adoption

# Exhibit B: Goal, Objective, Policy Development - Gilleland Creek Water Quality



# Governing Values

- Govern Transparently
- Distribute Resources Equitably
- Support Public Safety and Wellbeing
- Protect Natural and Cultural Resources
- Respond to Constituents' Needs
- Deliver Services Efficiently and Economically
- Leverage County Resources through Partnerships

# Next Step

- Schedule
- Community Engagement Process