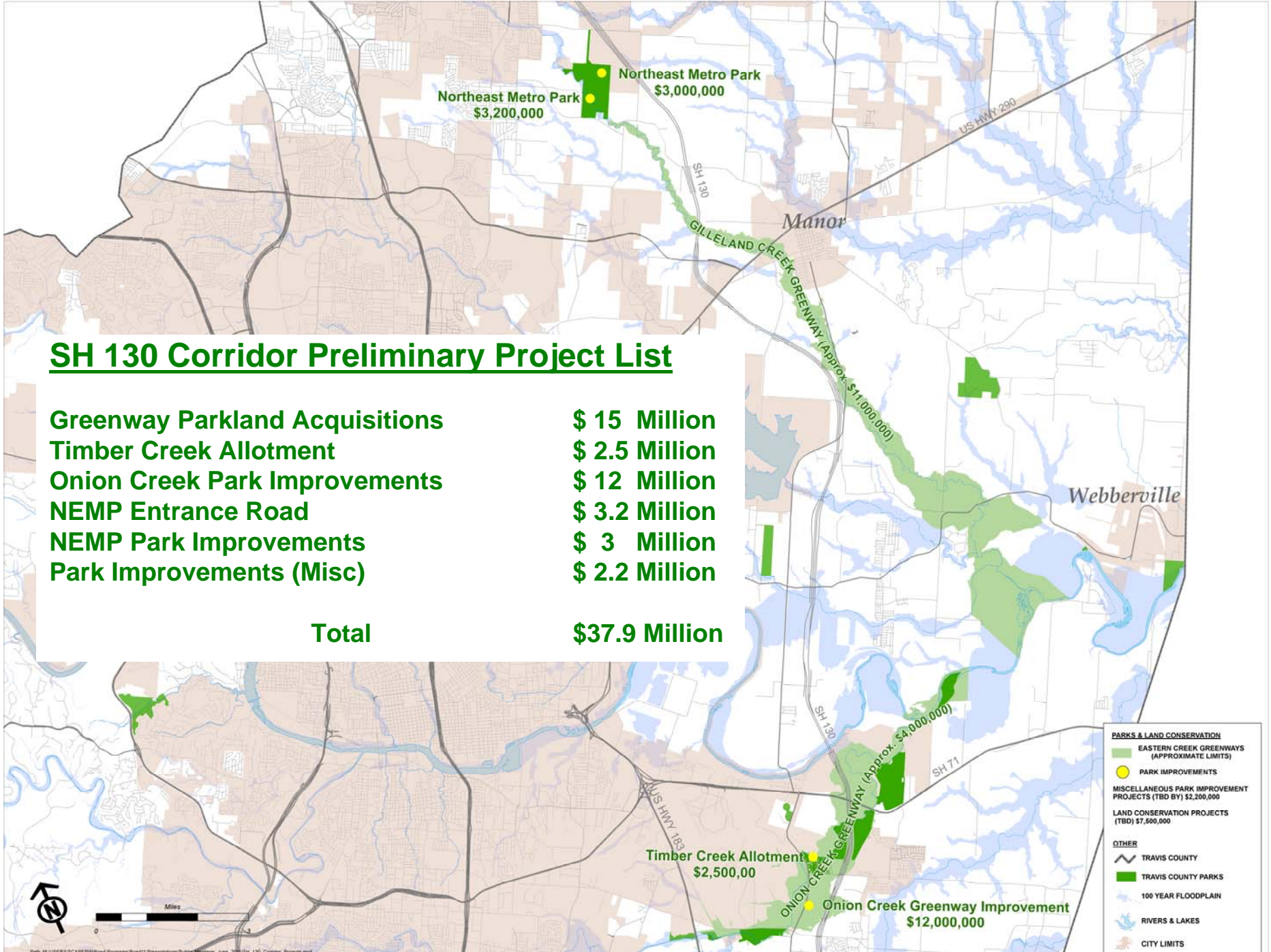




Preliminary Park and Land Conservation Bond Projects

2011 Citizen Bond Advisory Committee Recommendations

June 2011



Northeast Metro Park
\$3,200,000

Northeast Metro Park
\$3,000,000

SH 130

GILLELAND CREEK GREENWAY (Approx. \$11,000,000)

Manor

US HWY 290

Webberville

SH 130

SH 71

Timber Creek Allotment
\$2,500,00

ONION CREEK GREENWAY (Approx. \$4,000,000)

Onion Creek Greenway Improvement
\$12,000,000

SH 130 Corridor Preliminary Project List

Greenway Parkland Acquisitions	\$ 15 Million
Timber Creek Allotment	\$ 2.5 Million
Onion Creek Park Improvements	\$ 12 Million
NEMP Entrance Road	\$ 3.2 Million
NEMP Park Improvements	\$ 3 Million
Park Improvements (Misc)	\$ 2.2 Million

Total \$37.9 Million

PARKS & LAND CONSERVATION

- EASTERN CREEK GREENWAYS (APPROXIMATE LIMITS)
- PARK IMPROVEMENTS
- MISCELLANEOUS PARK IMPROVEMENT PROJECTS (TBD BY) \$2,200,000
- LAND CONSERVATION PROJECTS (TBD) \$7,500,000

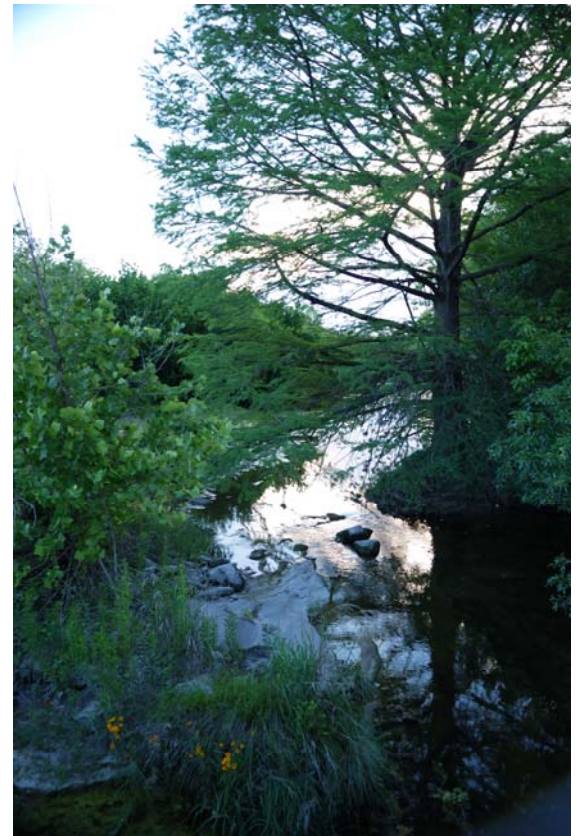
OTHER

- TRAVIS COUNTY
- TRAVIS COUNTY PARKS
- 100 YEAR FLOODPLAIN
- RIVERS & LAKES
- CITY LIMITS





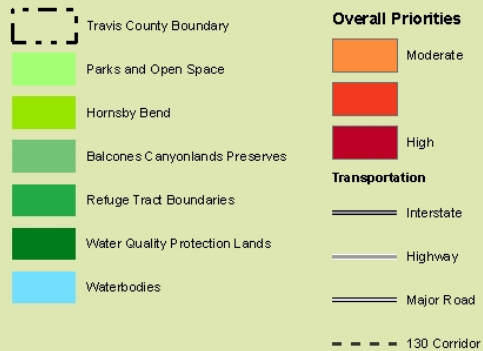




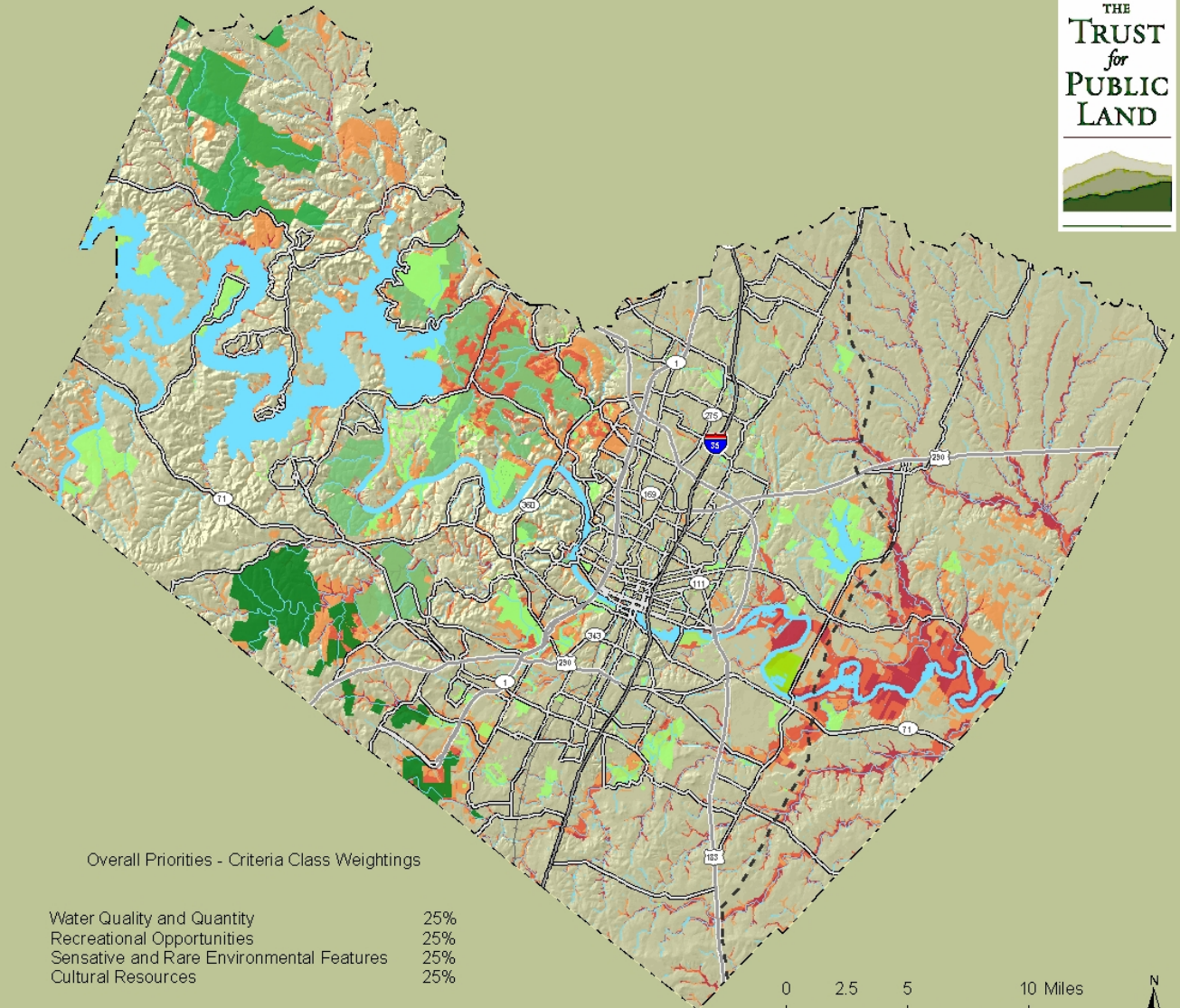
Travis County, TX Greenprint Overall Conservation Priorities

This map shows the Travis County, TX Greenprint and the overall conservation priorities. Areas in orange have a moderate conservation priority and areas in dark red have a high conservation priority.

Legend



THE
TRUST
for
PUBLIC
LAND



Overall Priorities - Criteria Class Weightings

Water Quality and Quantity	25%
Recreational Opportunities	25%
Sensitive and Rare Environmental Features	25%
Cultural Resources	25%

0 2.5 5 10 Miles



Special thanks to the following data providers:
City of Austin, Travis County, University of Texas
at Austin, Texas Parks and Wildlife, Texas
Historical Commission, CAPCOG, USGS

Map created by Christian Smith for
The Trust for Public Land
on May 17, 2006

Created in ESRI ArcMap 9.1®
Map Projection: NAD 1983 State Plane
Texas Central FIPS 4203

TPL, The Trust for Public Land, and The Trust for Public Land
logo are trademarks of The Trust for Public Land.
Copyright © 2006 The Trust for Public Land.
www.tpl.org

Information on this map is provided for purposes of
discussion and visualization only.

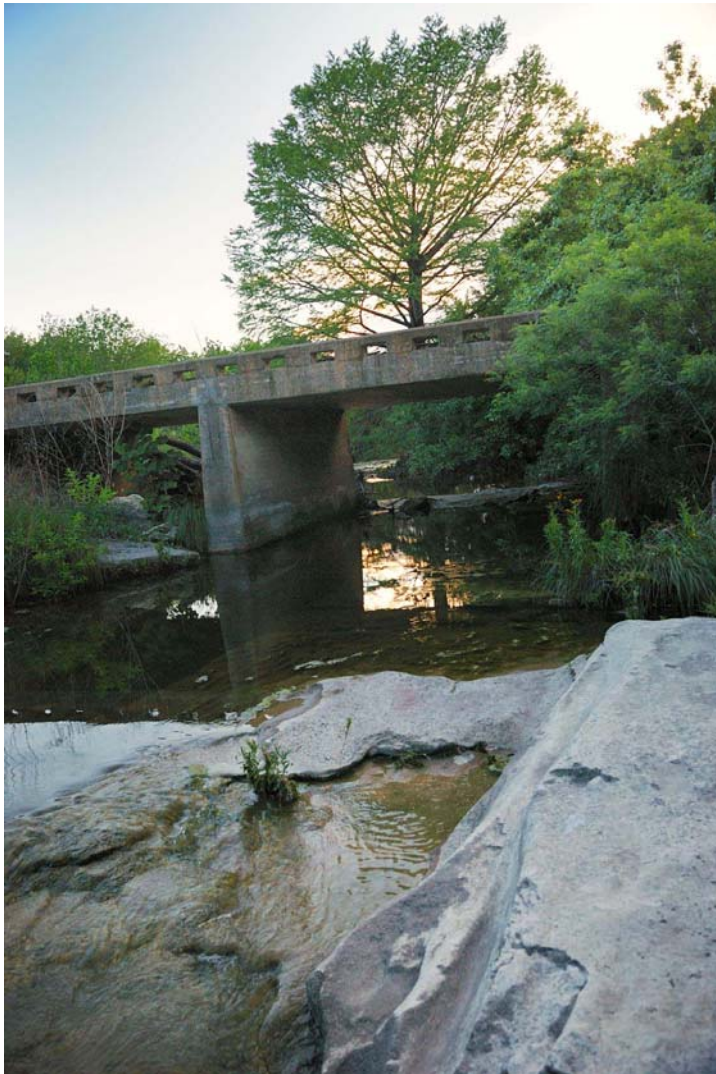
Onion Creek Greenway Vision

Travis County, Texas



Precinct 4 Road and Bridge Yard





Old US HWY 183 Bridge



Old SH 71 Culvert



Relocated Congress Avenue Bridge

Barkley Meadows/Berdol Bend Parks



Eroding Soil



Switchgrass

Gayfeather

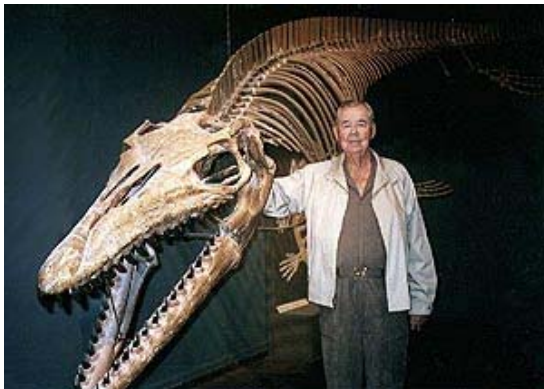


Looking to SH 130 Crossing from Timber Creek

Southeast Metro Park



Southeast Metro Park on Onion Creek



Mosasaur skeleton found on Onion Creek



Trail at Southeast Metro Park



Northeast Metro Park

Proposed 2011 Bond Park Improvements

- Entrance Road and Bridge - \$3,200,000
- Interior Road, Parking, Restroom, Play field, and BMX Track - \$3,000,000



Land Conservation \$7.5 Million



Pipe Dream Ranch, Wilbarger Creek Conservation Alliance Land

Resource-based Park Projects Preliminary List

Pedernales River Corridor

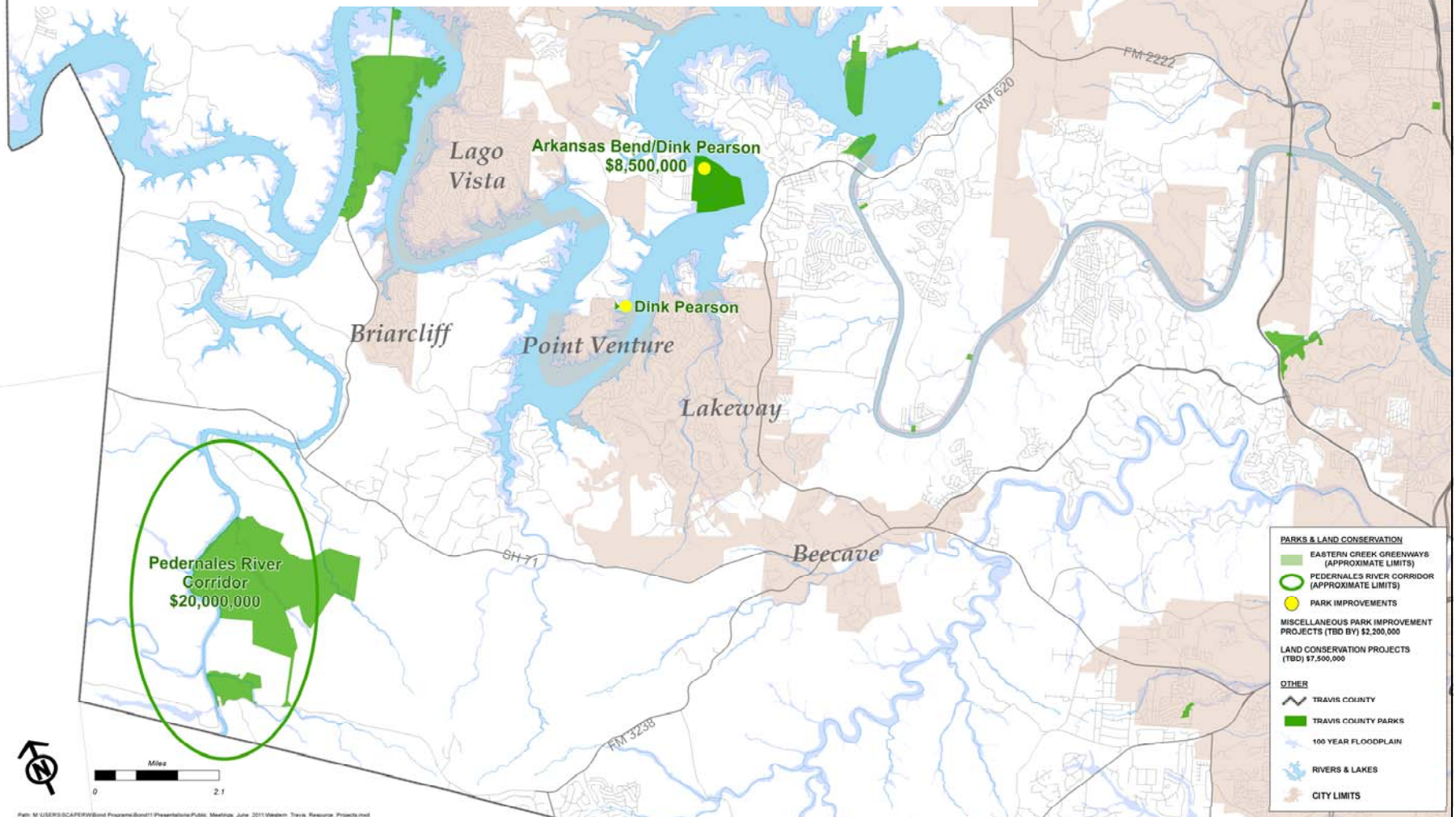
\$ 20 Million

Arkansas Bend/Dink Pearson Improvements

\$ 8.5 Million

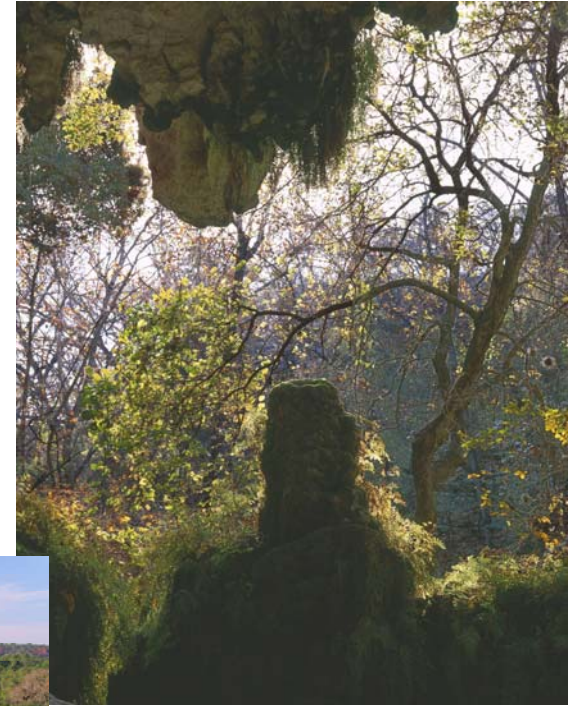
Total

\$28.5 Million

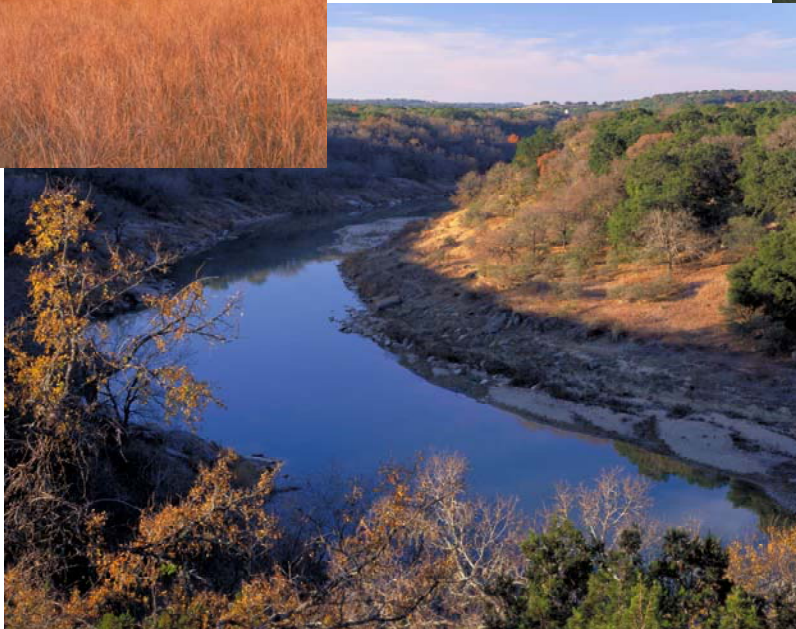




Uplands



Stalagtites and Stalagmites



Pedernales River Corridor





Erosion at Arkansas Bend Park

Native Vegetation

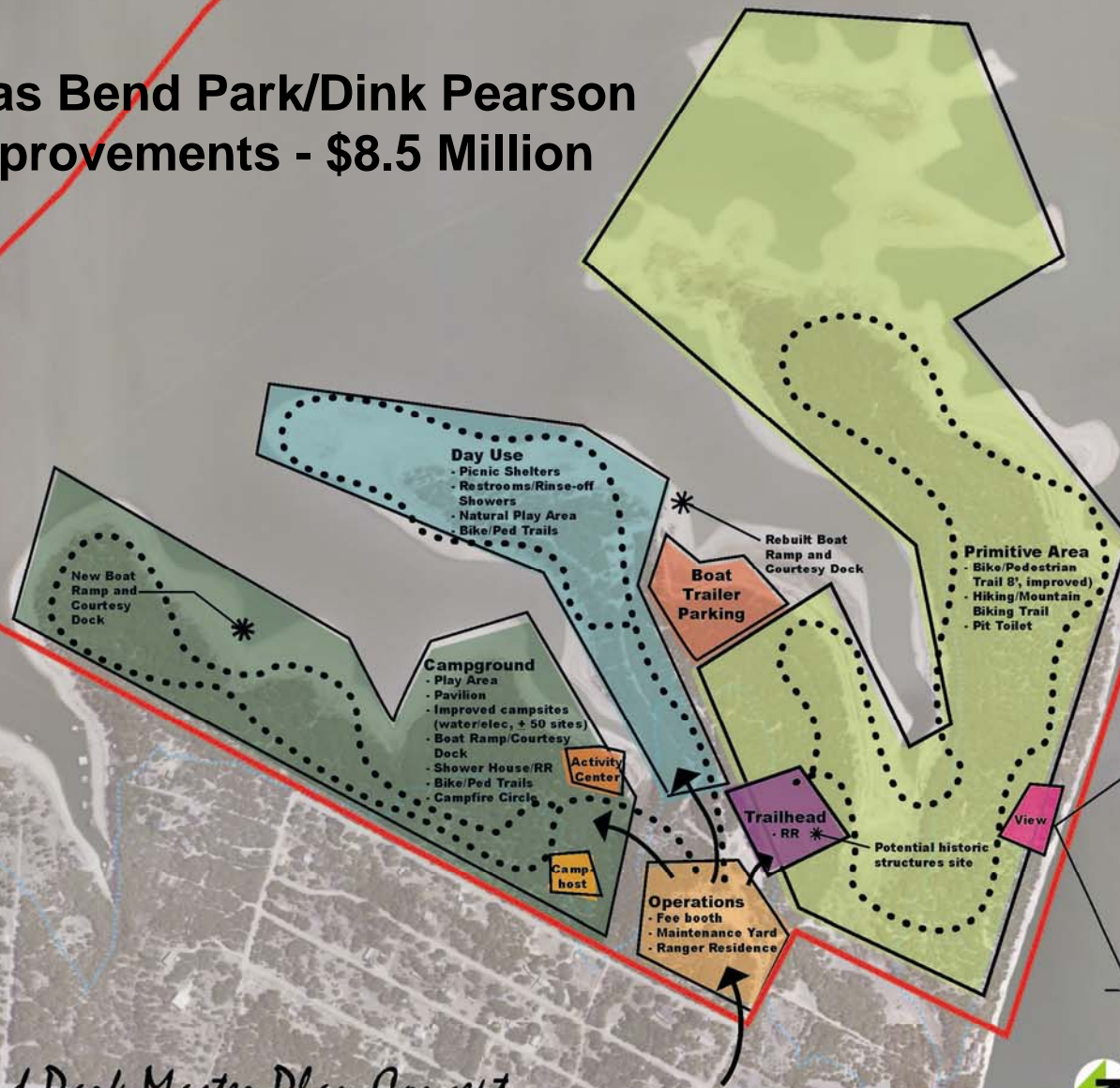


Arkansas Bend Park Shoreline



Picnicking at Arkansas Bend Park

Arkansas Bend Park/Dink Pearson Park Improvements - \$8.5 Million



Note:
Environmental assessments of biological and cultural resources shall be completed prior to site specific master planning of this park.

Legend
LCRA Land
Travis County Parks
715' Contour
Trails
RR Restroom
WT Waterless Toilet
SS Shade Structures

Arkansas Bend Park Master Plan Concept

Park Land Acquisition

Eastern Creek Greenways	\$15 million
Timber Creek Allotment	\$ 2.5 million
Pedernales River Corridor	<u>\$ 20 million</u>
	\$37.5 million

Park Improvements

Onion Creek Greenway	\$12 million
Arkansas Bend/Dink Pearson Parks	\$8.5 million
NEMP Entrance Road	\$3.2 million
NEMP Phase 4 Improvements	\$3 million
Miscellaneous Park Improvements	<u>\$2.2 million</u>
	\$28.9 million

Land Conservation

Conservation Easements	\$7.5 million
------------------------	---------------

TOTAL	\$73.9 million
--------------	-----------------------