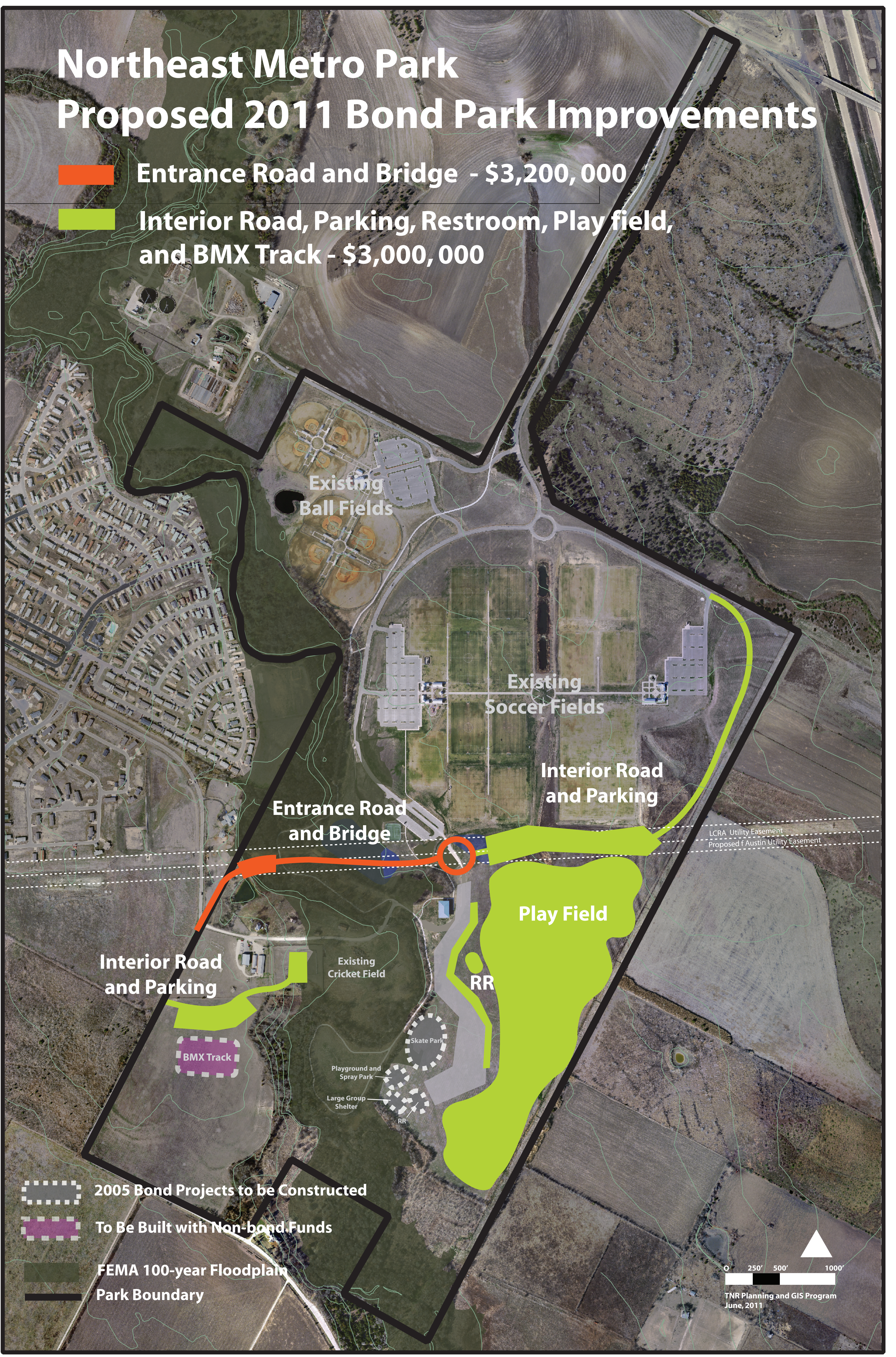


Northeast Metro Park Proposed 2011 Bond Park Improvements

- Entrance Road and Bridge - \$3,200,000
- Interior Road, Parking, Restroom, Play field, and BMX Track - \$3,000,000



- 2005 Bond Projects to be Constructed
- To Be Built with Non-bond Funds
- FEMA 100-year Floodplain
- Park Boundary

0 250' 500' 1000'

TNR Planning and GIS Program
June, 2011